

BURLAP

BURLAP SPINS THE TEXTILE AESTHETIC WITH A WONDERFUL CROSS WEAVE WITH THE COMPLEXITY OF LINEN. THE PALETTE IS SUBTLE AND SOOTHING INFLUENCING AN AMBIANCE OF WARMTH.



**creative
materials
corporation**



SMOKE

SMOKE

BURLAP

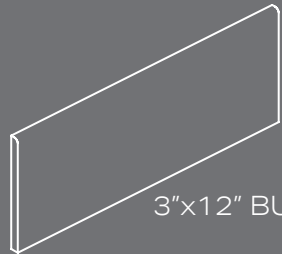
PORCELAIN TILE

SIZES

6"x24"

12"x24"

TRIM



3"x12" BULLNOSE

FINISH

MATTE

THICKNESS

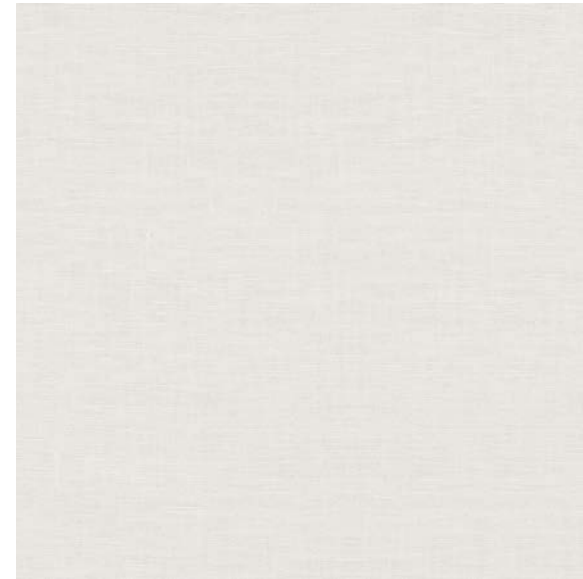
9MM

LEAD TIME + LOCATION

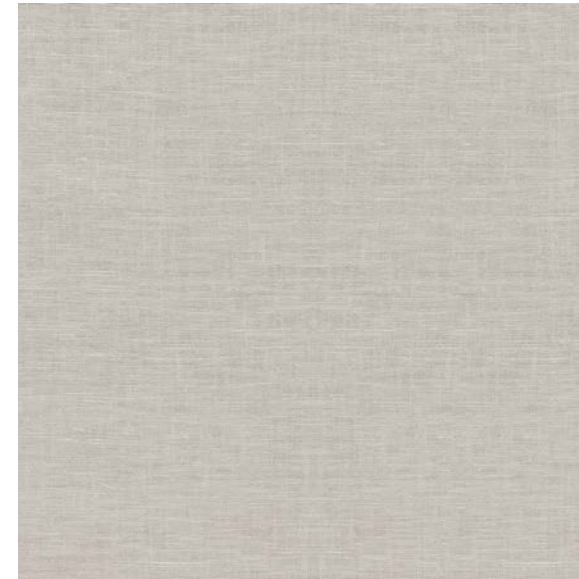
1-2 WEEKS DOMESTIC INVENTORY | MALAYSIA

TECHNICAL DATA

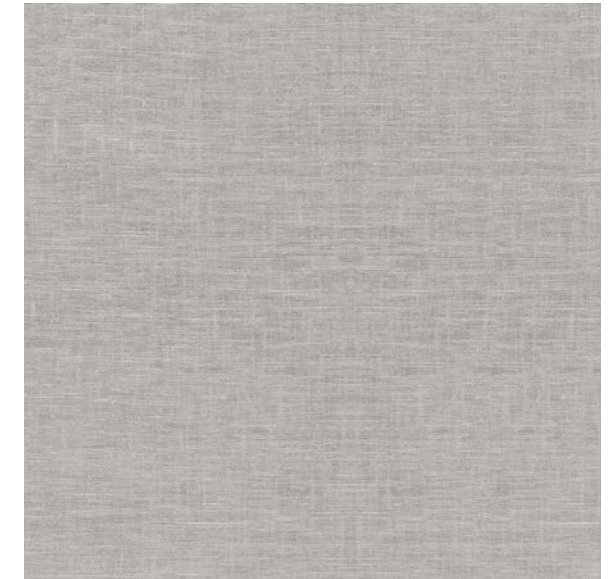
SPECIFICATION REFERENCE	TEST METHOD	TEST RESULT
BREAKING STRENGTH	ISO 10545-4	≥350
WATER ABSORPTION	ISO 10545-3	≤0.5%
SCRATCH HARDNESS	MOHS	7
DCOF	ANSI A137.1	≥0.42



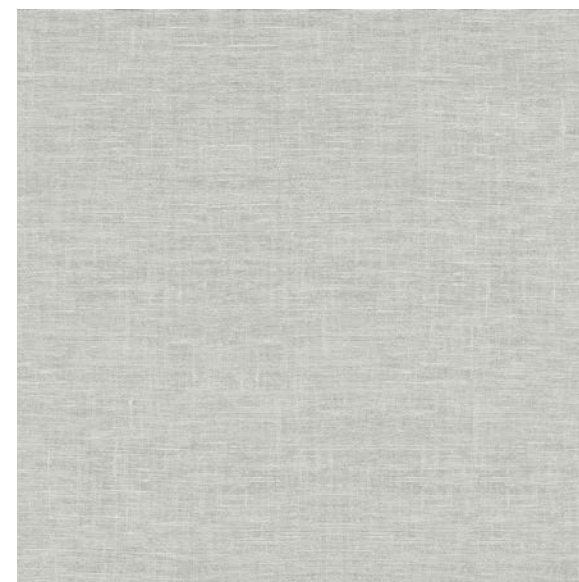
IVORY



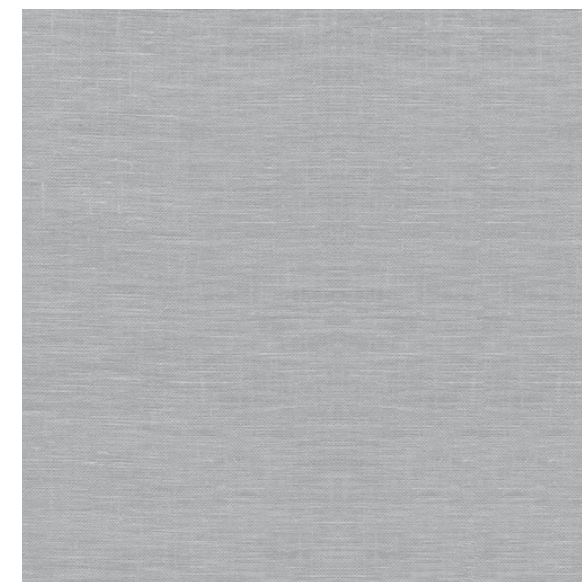
NATURAL



SMOKE



LIGHT GREY



GREY

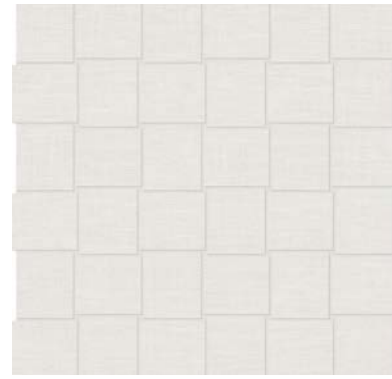
Shade
V1
Variation

**All technical data was supplied by the manufacturer and is being provided by CMC for informational purposes only. Exact test results should be requested from your CMC contact.

BURLAP

PORCELAIN TILE

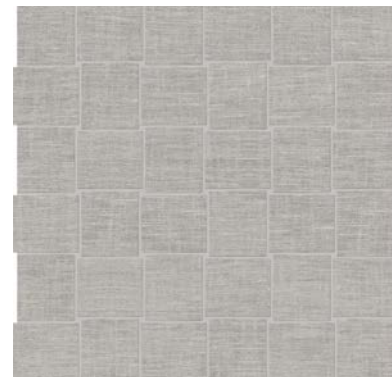
MOSAIC | 2"x2" BASKETWEAVE ON 12"x12"x9MM | MATTE



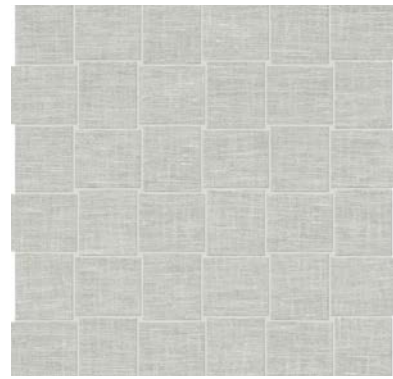
IVORY



NATURAL



SMOKE



LIGHT GREY



GREY

MOSAIC | 1"x4" STACKED MOSAIC ON 12"x12"x9MM | MATTE



LIGHT BLEND 01



DARK BLEND 01

MOSAIC | RANDOM STRIP MOSAIC ON 12"x12"x9MM | MATTE



LIGHT BLEND 02



DARK BLEND 02

RANDOM STRIP MOSAIC - DARK BLEND 02

