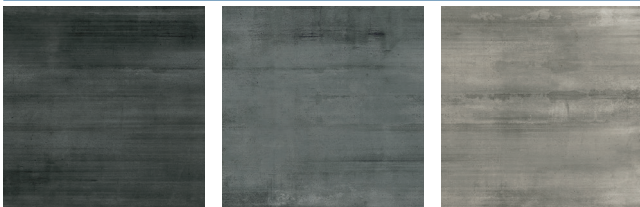




DESCRIPTION

This concrete aesthetic draws inspiration from the Saguaro, a tall cactus with deep linear indentations stretching from the base up. The collection focuses on these linear elements with different textural imprints on concrete.

COLORS



Black

Charcoal

Greige



Grey

AVAILABLE SIZES

24"x24"	8"x48"
	24"x48"
12"x24"	12"x48"

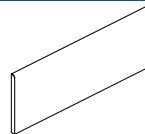
FINISHES

Matte, Textured, Grip

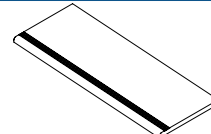
THICKNESS

9mm

TRIM



Bullnose
2.8"x24"



Step Tread
12"x24"

TECHNICAL DATA*

Specification Reference	Test Method	Test Result
Water Absorption	ISO 10545-3	≤ .1%
Breaking Strength	ISO 10545-4	50N/mm ²
DCOF	ASTM C1028	≥ 0.42

*All technical data was supplied by the manufacturer and is being provided by CMC for informational purposes only. Exact test results should be requested from your CMC contact.



Pre-Consumer