



DESCRIPTION

Corrugate's varied color palette of red, white, grey, and bronze allows this look to fit into numerous design trends—from industrial urban to bohemian chic. The strong corrugated sheet metal-inspired tile plays off the different colors and shadows to create a time-worn aesthetic. Use Corrugate to polish off any design.

COLORS



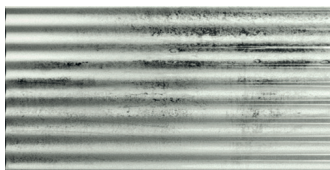
Grey



Iron



Rust



White

AVAILABLE SIZE



4"x8"

FINISHES

Glossy

THICKNESS

7mm

TECHNICAL DATA*

Specification Reference	Test Method	Test Result
Water Absorption	ISO 10545-3	≤ 16%

*All technical data was supplied by the manufacturer and is being provided by CMC for informational purposes only. Exact test results should be requested from your CMC contact.

