



ILLUSION AURA

ILLUSION AURA HINTS TO RUSTRIAL DESIGN WITH SUBTLE DIMPLING AND AN UNDULATED SURFACE. A MOOD SET BY AN ARTISAN TO COMBINE URBAN WITH CONTEMPORARY FOR A CHIC SETTING.



creative
materials
corporation

DARK GREY

RED

ILLUSION AURA

CERAMIC TILE

SIZES

4"x12"

FINISH

GLOSSY, MATTE

THICKNESS

7MM

LEAD TIME + LOCATION

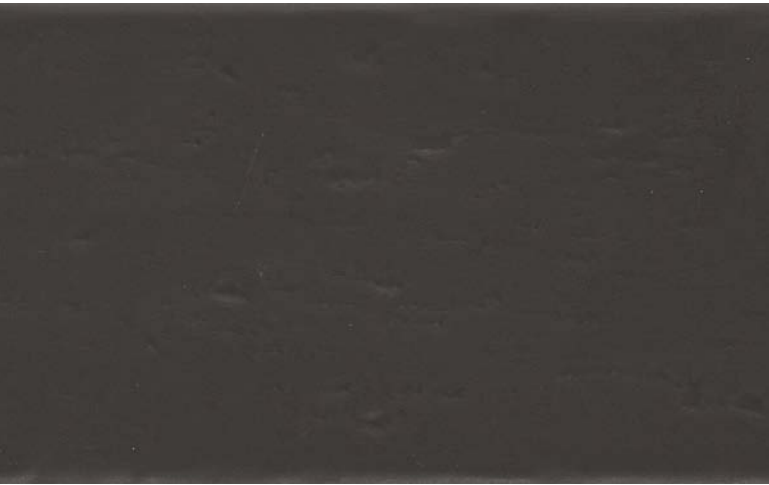
6-8 WEEKS | ITALY

TECHNICAL DATA

Specification Reference	Test Method	Test Result
/BREAKING STRENGTH	EN 10545-4	22N/MM ²
WATER ABSORPTION	EN 10545-3	≥10%
DCOF	ANSI A137.1	<0.42*



**Ceramic is intended for wall use only. All technical data was supplied by the manufacturer and is being provided by CMC for informational purposes only. Exact test results should be requested from your CMC contact.



BLACK



WHITE



BEIGE



TAUPE



DARK GREY



RED



GREEN

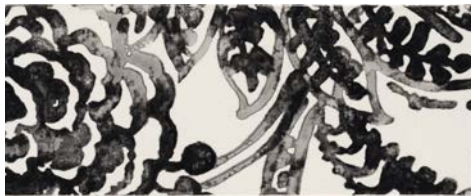
ILLUSION AURA

CERAMIC TILE

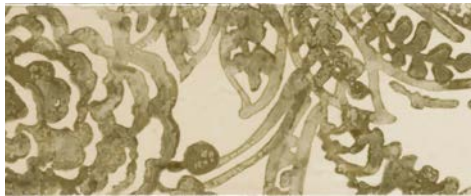
DECOR | 4"X12 | GLOSSY



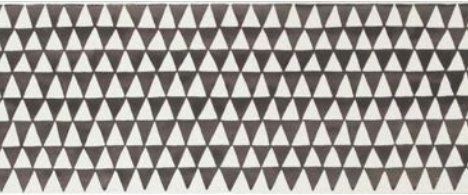
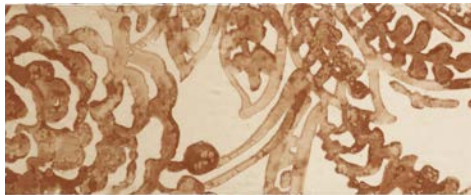
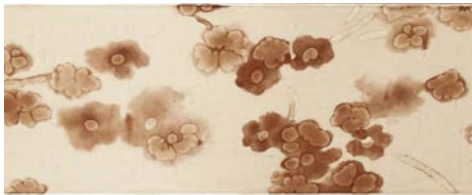
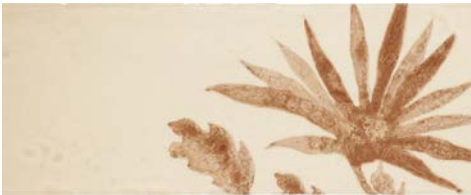
BLACK NATURAL



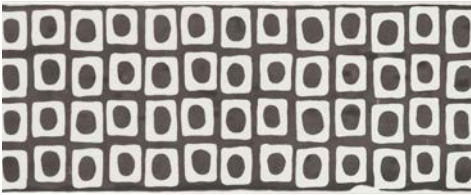
GREEN NATURAL



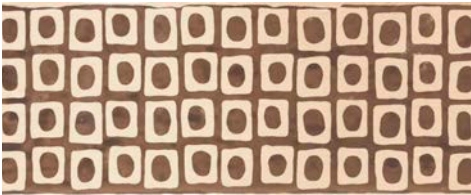
RED NATURAL



BLACK MOTIF



RED MOTIF



DECOR | 1"X12 LINER | GLOSSY



BLACK



DARK GREY



WHITE



BEIGE



TAUPE



GREEN



RED

