



BLUE GLOSS, BLUE PINPOINT + BLUE TEXTURED

creative  
materials  
corporation

# INSIDE

INSIDE IS ROBUST IN TEXTURES THAT ARE ALTERED TEXTILES REFERENCED FROM MILITARY STYLE. FROM GLASS-LIKE APPEARANCES THAT ARE HIGHLY REFLECTIVE TO A TEXTURE REMINISCENT OF WORN DENIM, THE COLLECTION IS AVANTGARDE.



GREEN GLOSS, GREEN PINPOINT + GREEN TEXTURED



# INSIDE

## CERAMIC TILE

### SIZES



4"x12"



### FINISH

MATTE, GLOSSY, TEXTURED

### THICKNESS

7MM

### LEAD TIME + LOCATION

6-8 WEEKS | ITALY

### TECHNICAL DATA

Specification Reference	Test Method	Test Result
BREAKING STRENGTH	EN 10545-4	R>22N/MM <sup>2</sup>
WATER ABSORPTION	EN 10545-3	≤0.16%
DCOF	ANSI A137.1	<0.42*



\*\*Ceramic is intended for wall use only. All technical data was supplied by the manufacturer and is being provided by CMC for informational purposes only. Exact test results should be requested from your CMC contact.

#### GLOSSY



BLACK



GREY



WHITE



GREEN

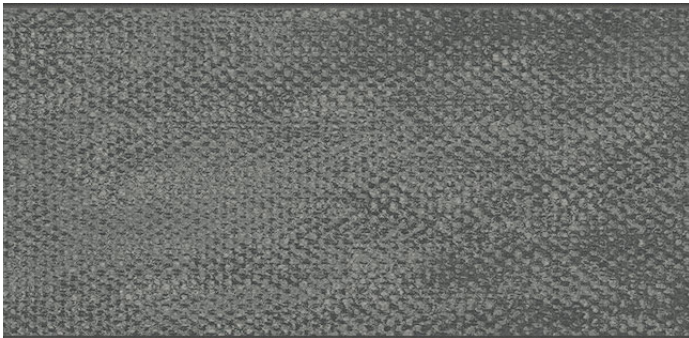


BLUE

#### PINPOINT | MATTE



BLACK



GREY



WHITE



GREEN

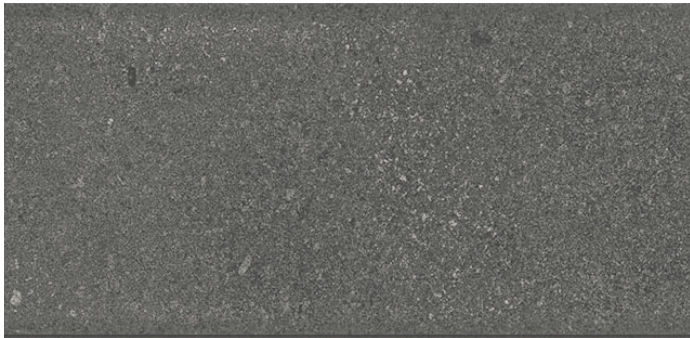


BLUE

#### TEXTURED



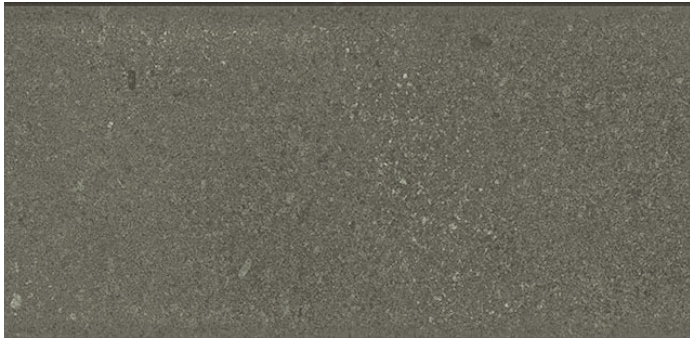
BLACK



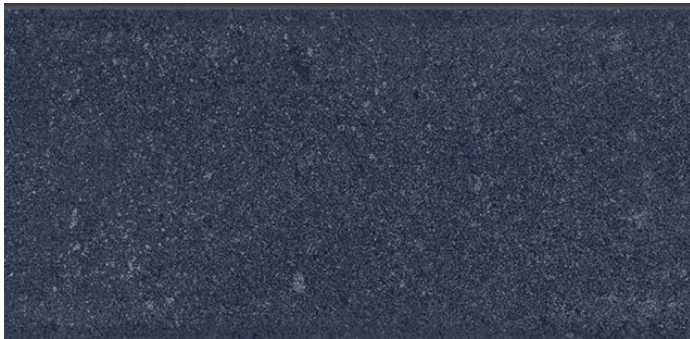
GREY



WHITE



GREEN



BLUE