

# COLTINA

COLTINA DEFIES THE CLASSIC ONE-DIMENSIONAL GREY LAVA STONE BY INCORPORATING COLORS AND PATTERNS TO THE BASE. DEPENDING ON THE CHOSEN COLOR + PATTERN COMBINATION A DIFFERENT RESULT IS ACHIEVED EACH TIME.



BLUE | GEO, MESH, PUZZLE

creative  
materials  
corporation



OCHRE | GEO, MESH, PUZZLE, RAY

# COLTINA

## PORCELAIN TILE

### SIZES

24"x48"	24"x24"
6"x48"	
4"x24"	

### FINISH

MATTE

### THICKNESS

9MM

### LEAD TIME + LOCATION

6-8 WEEKS | ITALY

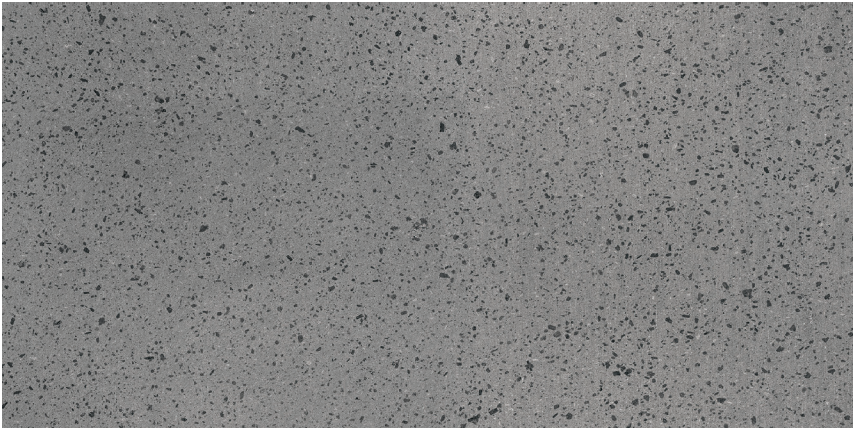
### TECHNICAL DATA

Specification Reference	Test Method	Test Result
BREAKING STRENGTH	ISO 10545-4	R>28 N/MM2
WATER ABSORPTION	ISO 10545-3	<0.5%
ABRASION RESISTANCE	ISO 10545-6	<175 MM3
DCOF	ANSI A137.1	>0.42

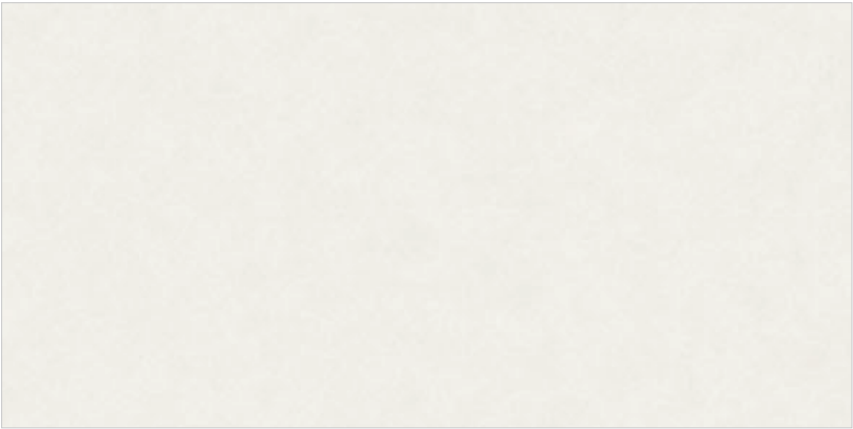


\*\*All technical data was supplied by the manufacturer and is being provided by CMC for informational purposes only. Exact test results should be requested from your CMC contact.

NOTE | 24"x24" + 24"x48 = GLAZED COLOR-BODY



GREY



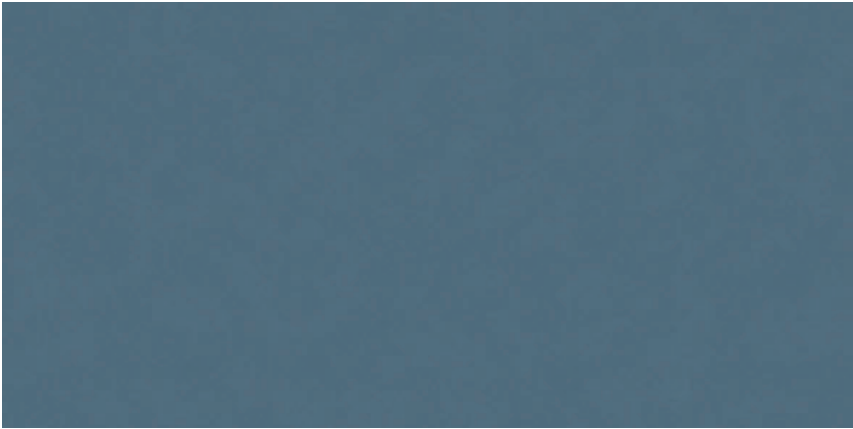
WHITE



OCHRE



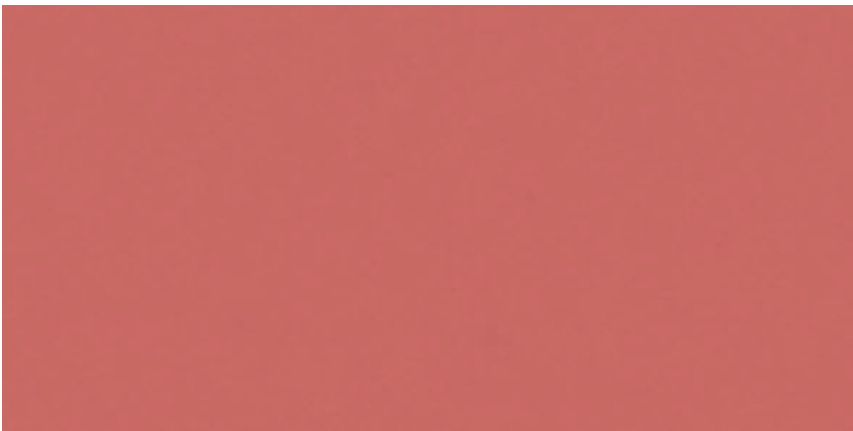
GREEN



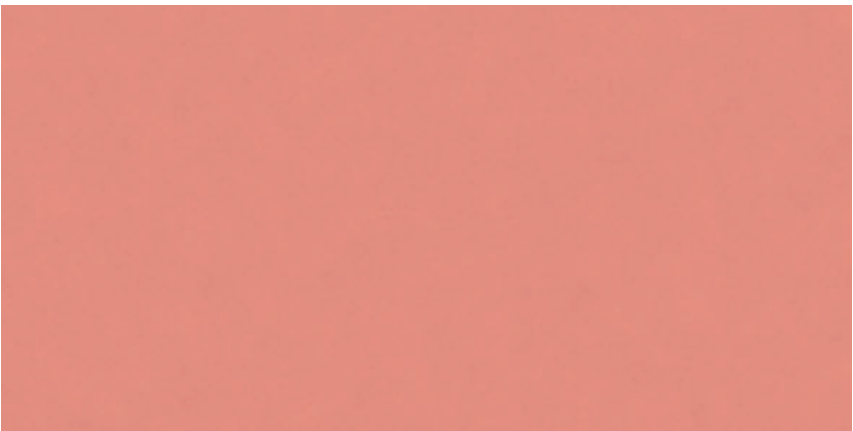
BLUE



PURPLE



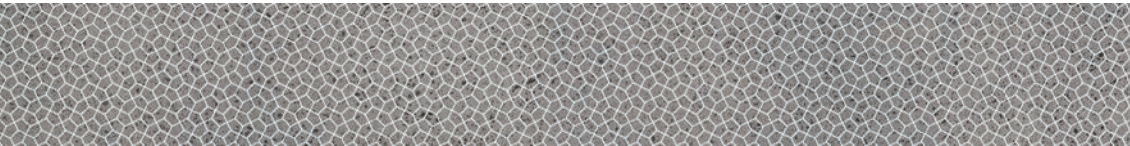
ROSE



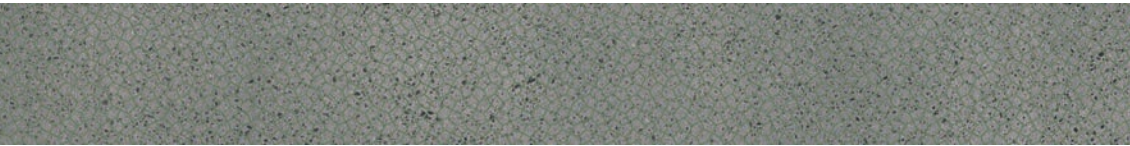
PINK

ALL SOLIDS, EXCEPT GREY, AVAILABLE IN 4"x24 ONLY". GREY ONLY AVAILABLE IN 24"X24" AND 24"X48".

GEO | 6"x48" | MATTE



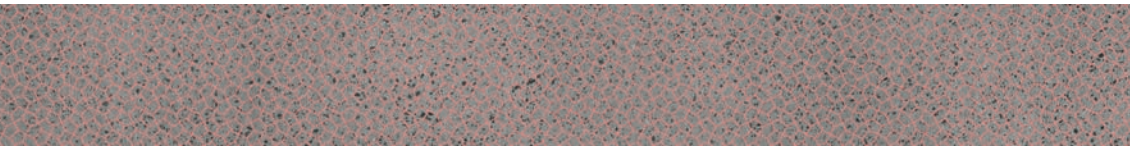
WHITE



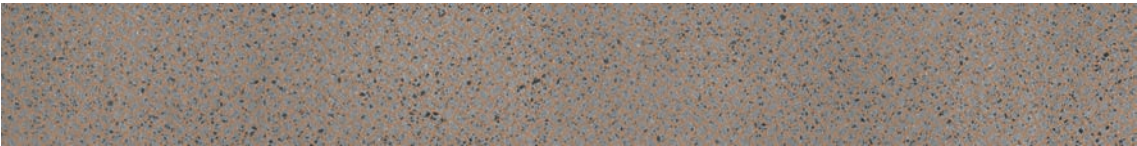
GREEN



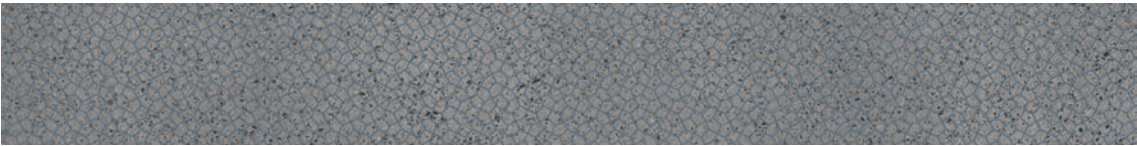
PURPLE



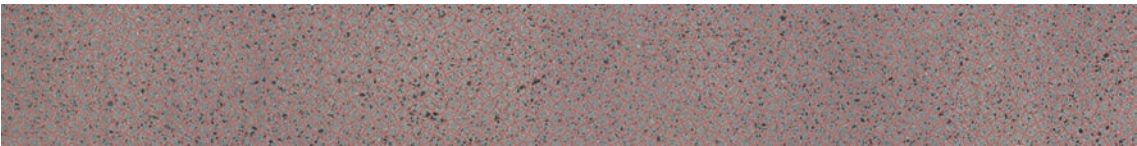
PINK



OCHRE



BLUE



ROSE

MESH | 6"x48" | MATTE



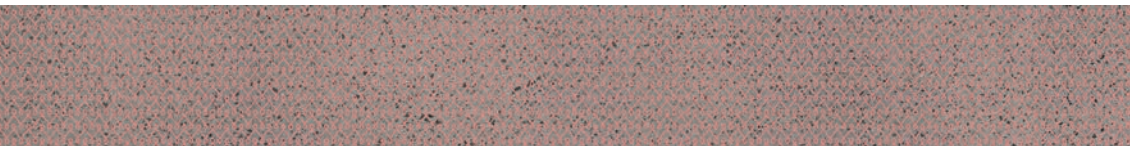
WHITE



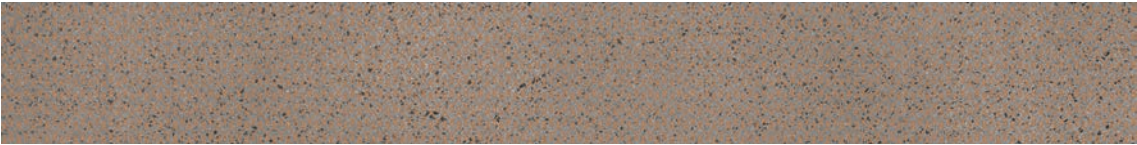
GREEN



PURPLE



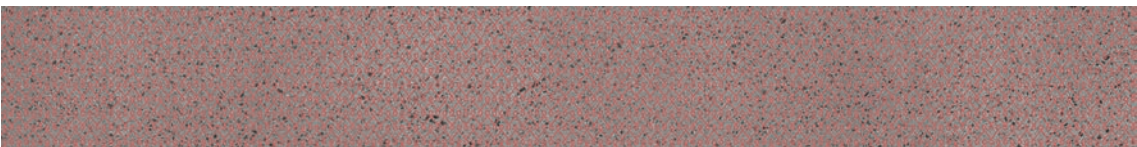
PINK



OCHRE



BLUE

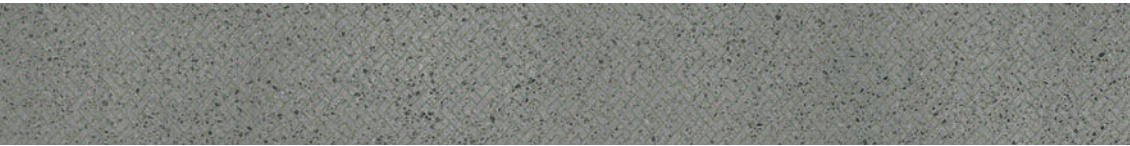


ROSE

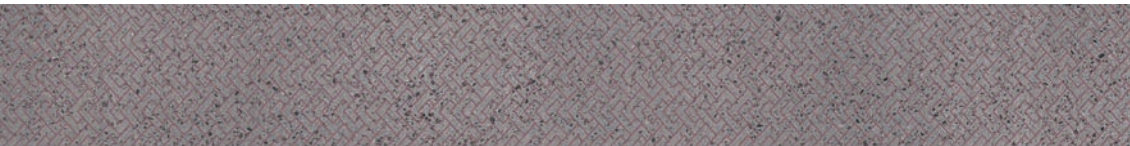
PUZZLE | 6"x48" | MATTE



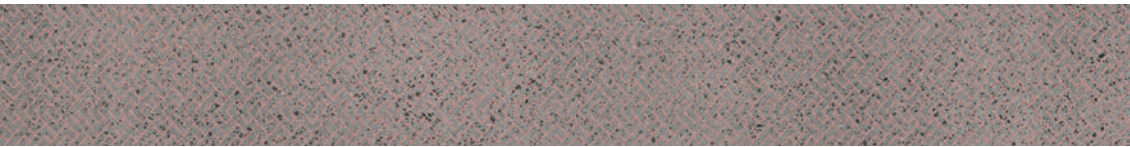
WHITE



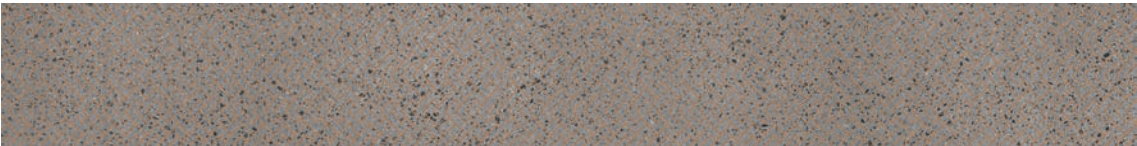
GREEN



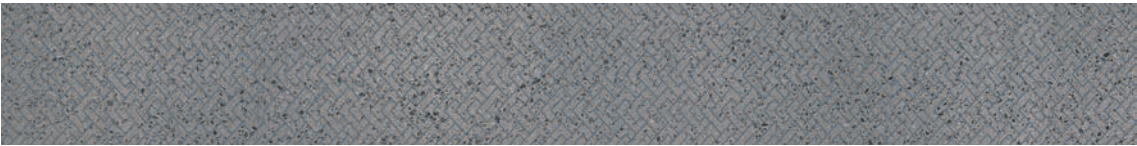
PURPLE



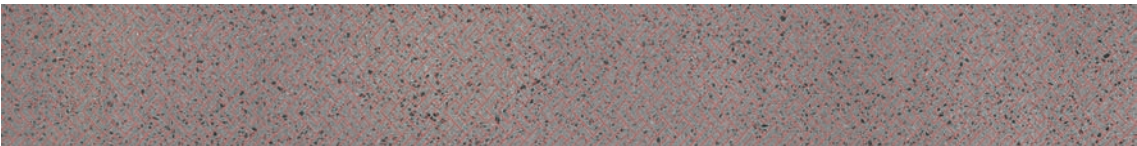
PINK



OCHRE

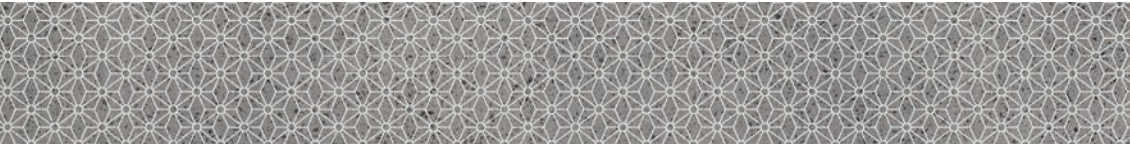


BLUE

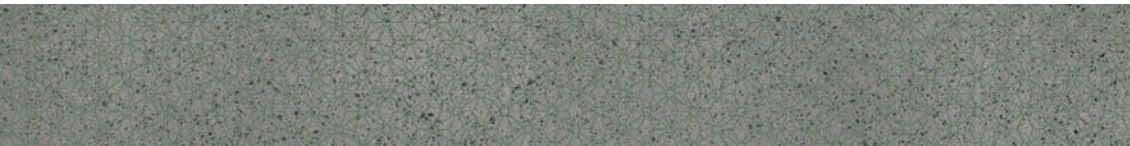


ROSE

RAY | 6"x48" | MATTE



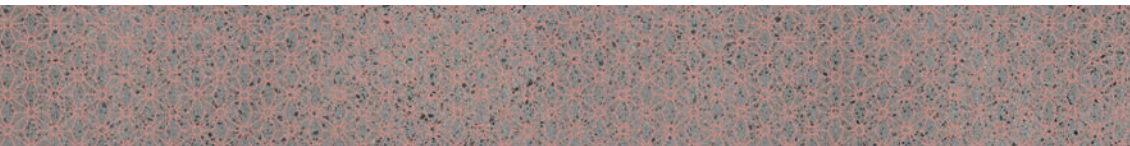
WHITE



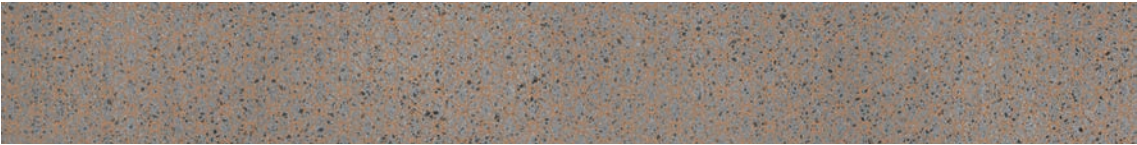
GREEN



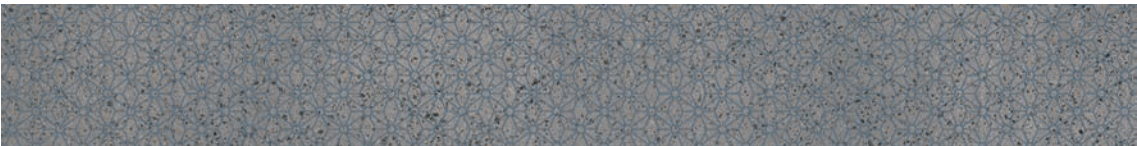
PURPLE



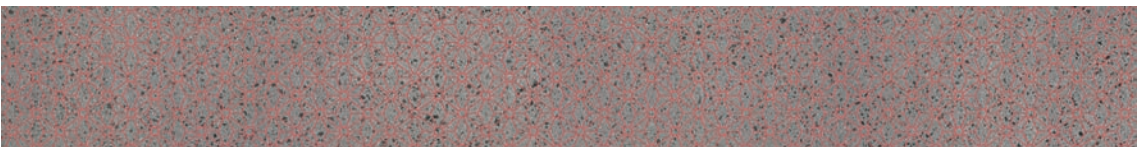
PINK



OCHRE



BLUE



ROSE

