



DESCRIPTION

A refined reprocessing of materials combines the strength of ceramic with the memory of fabric, endowing residential and commercial rooms with warmth, strength, softness and countless design possibilities. The Soul collection offers visual and tactile suggestions of elegant furnishing fabrics. Rooms have an elegant charm and a contemporary look and can be lived in freely because of the excellent technical performance of porcelain stoneware.

COLORS

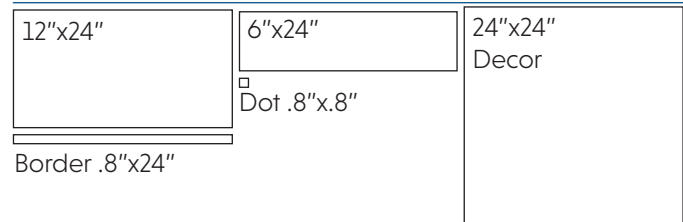


White Cotton Ivory Line Silver Wool



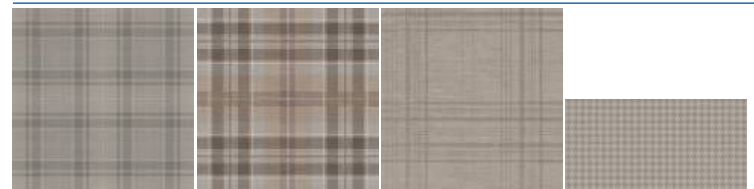
Grey Merino Coffee Cloth Dark Silk

AVAILABLE SIZE



Border .8"x24"

DECOR



Tartan Cold Tartan Warm Tartan Delicate Piedepoule Pattern

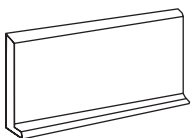
THICKNESS

9mm

FINISH

Matte

TRIM



Cove Base
6"x12"

TECHNICAL DATA*

Specification Reference	Test Method	Test Result
DCOF	DCOF AcuTest	≥ 0.42
Water Absorption	ANSI 137.1	≤ 0.5%
Breaking Strength	ANSI 137.1	≥ 250 lbf

*All technical data was supplied by the manufacturer and is being provided by CMC for informational purposes only. Exact test results should be requested from your CMC contact.

