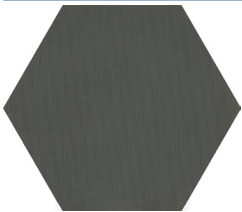




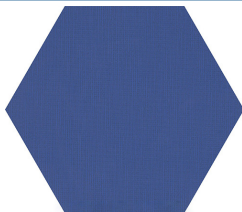
## DESCRIPTION

The 6-gon hexagon shaped LVT in bright colors and neutrals adds a fresh, geometric design to LVT floors.

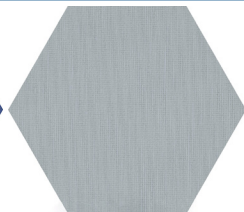
## COLORS



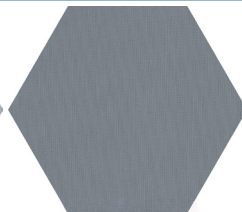
Black



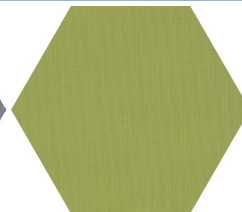
Blue



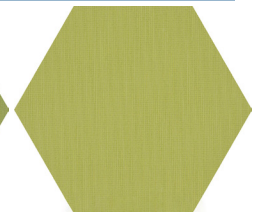
Cool Grey 01



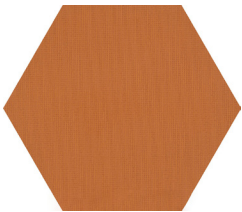
Cool Grey 02



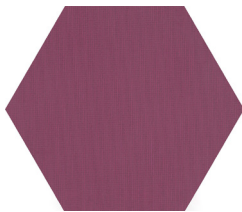
Green



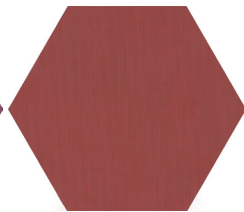
Lime Green



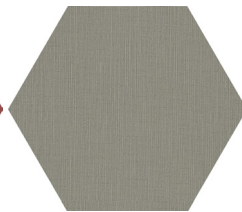
Orange



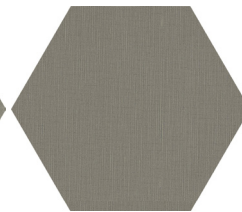
Purple



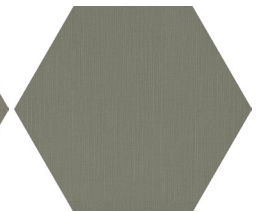
Red



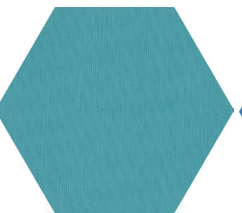
Taupe 01



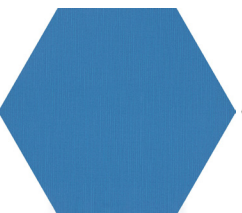
Taupe 02



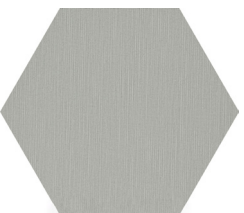
Taupe 03



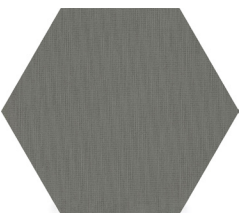
Teal



Turquoise



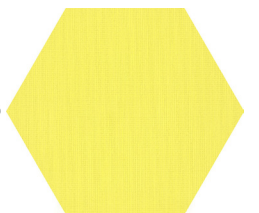
Warm Grey 01



Warm Grey 02



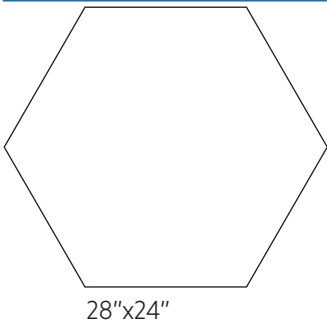
White



Yellow



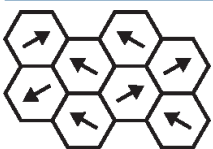
## AVAILABLE SIZES



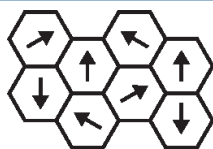
## ATTRIBUTES

Wear Layer Thickness	20 mil
Total Thickness	4mm
Edge Profile	Square
Installation	Direct Glue
Construction	Commercial Luxury Vinyl Tile
Classification	ASTM F1700 Class III, Type B

## RECOMMENDED INSTALLATION METHOD



Diagonal



Random

## CERTIFICATIONS

**Environmental Product Declaration (EPD)** - 3rd party certified in accordance with ISO 14025, EN 15804, and ISO 21930:2017

**FloorScore®** - Certified

## GREEN LEAD CONTRIBUTION CREDIT

**MR Credit: Building Product Disclosure and Optimization Environmental Product Declarations - Option 1: Environmental Product Declaration** - RfCi Industry Average EPD (50%)

**EQ Credit: Low Emitting Materials Option 1: Product Category Calculations** - Floorscore Certified

## TECHNICAL DATA\*

Specification Reference	Test Method	Test Result
Static Load	ASTM F970	Passes (modified) *1500 PSI
Resistance to Heat	ASTM F1514	Passes
Resistance to Light	ASTM F1515	Passes
Resistance to Chemicals	ASTM F925	Passes
Smoke Density	ASTM E662	Passes
Radiant Panel	ASTM E648	Passes, Class I

\*\*All technical data was supplied by the manufacturer and is being provided by CMC for informational purposes only. Exact test results should be requested from your CMC contact.