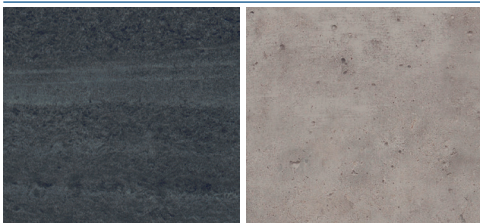




DESCRIPTION

The Stone Non-Vinyl Collection 01 offers...

COLORS



Black Slate

Grey Concrete

ATTRIBUTES

Wear Layer Thickness	20 mil
Total Thickness	2.5mm
Edge Profile	Micro-bevel
Installation	Direct Glue
Construction	Polymeric Composite Flooring
Classification	ASTM F1700 Commercial

ENVIRONMENTAL DATA

**Recycled Content:** 5%

**Indoor Air Quality:** FloorScore Certified; CDPH v1.1-2010

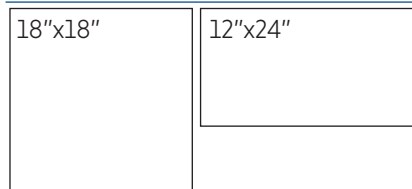
**Product Declarations:** EPD, HPD

**LEED Scoreboard:** May contribute to LEED credits:

LEED 2009: MRc4 Recycled Content, IEQ4.1 Low Emitting Adhesives, IEQ4.3 Low Emitting Materials - Flooring

LEED v4: Building Product Disclosure & Optimization - EPDs; Building Product Disclosure & Optimization - Sourcing Raw Materials; Building Product Disclosure & Optimization - Material Ingredients IEQc2 - Low Emitting Materials

AVAILABLE SIZES



TECHNICAL DATA\*

Specification Reference	Test Method	Test Result
Static Load	ASTM F970	Passes - 1500 PSI; Residual Indent ≤ 0.005"
Resistance to Heat	ASTM F1514	Passes
Resistance to Light	ASTM F1515	Passes
Resistance to Chemicals	ASTM F925	Passes
Smoke Density	ASTM E662	Passes - ≤450
Radiant Panel	ASTM E648	Passes, Class I

\*All technical data was supplied by the manufacturer and is being provided by CMC for informational purposes only. Exact test results should be requested from your CMC contact.