

CONVERGE

CONVERGE LVT EXHIBITS A CONTEMPORARY LINEAR PATTERN RUNNING THE SHORT SIDE OF THE PLANKS IN TWO PATTERNS, CHANGING UP THE CONVENTIONAL LOOK OF LINEAR LVT.



creative
materials
corporation



BROWN ALIGNED

CONVERGE

LUXURY VINYL TILE

SIZES

9"x36"

WEAR LAYER

40 MIL

THICKNESS

2.5MM

LEAD TIME + LOCATION

1-2 WEEKS DOMESTIC INVENTORY | NETHERLANDS

EDGE PROFILE

SQUARE

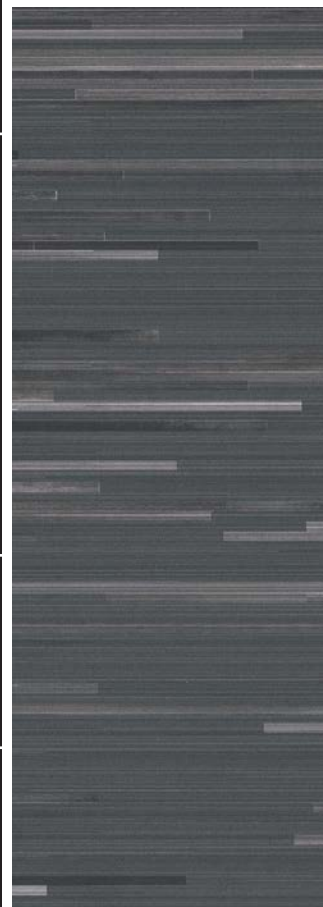
INSTALLATION

GLUE DOWN

ENVIRONMENTAL

- ENVIRONMENTAL PRODUCT DECLARATION (EPD) - 3RD PARTY CERTIFIED IN ACCORDANCE WITH ISO 14025, EN 15804, AND ISO 21930:2017
- FLOORSCORE® - CERTIFIED
- MR CREDIT: BUILDING PRODUCT DISCLOSURE AND OPTIMIZATION
 - ENVIRONMENTAL PRODUCT DECLARATIONS - OPTION 1
 - ENVIRONMENTAL PRODUCT DECLARATION - RFCI INDUSTRY AVERAGE EPD (50%)
 - EQ CREDIT: LOW EMITTING MATERIALS - OPTION 1
 - PRODUCT CATEGORY CALCULATIONS - FLOORSCORE CERTIFIED

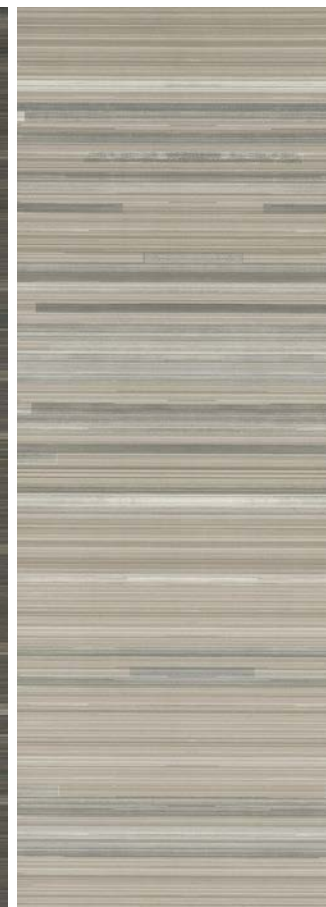
ALIGNED



DARK BROWN



BROWN



LIGHT BROWN



TAUPE



GREIGE



GREY



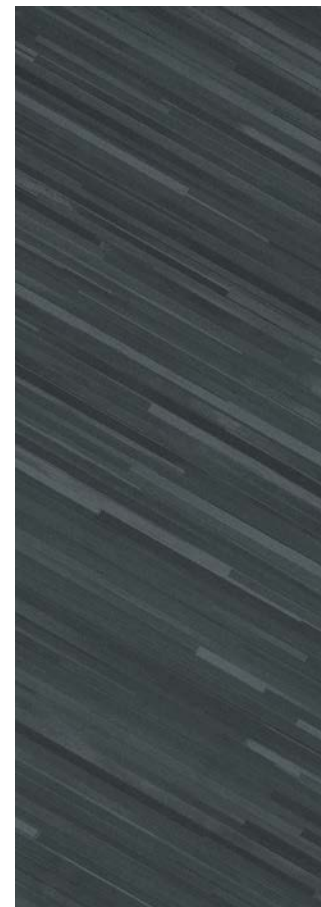
CONVERGE

LUXURY VINYL TILE

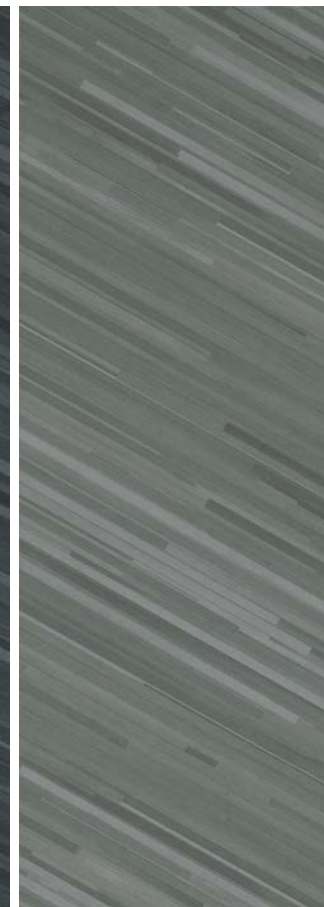
DIAGONAL

SPECIFICATION REFERENCE	TEST METHOD	TEST RESULT
STATIC LOAD	ASTM F970	PASSES (MODIFIED) *1000 PSI
HEAT RESISTANCE	ASTM F1514	PASSES
LIGHT RESISTANCE	ASTM F1515	PASSES
CHEMICAL RESISTANCE	ASTM F925	PASSES
SMOKE DENSITY	ASTM E662	PASSES
RADIANT PANEL	ASTM E648	PASSES, CLASS 1
CLASSIFICATION	ASTM F1700	CLASS III, TYPE B

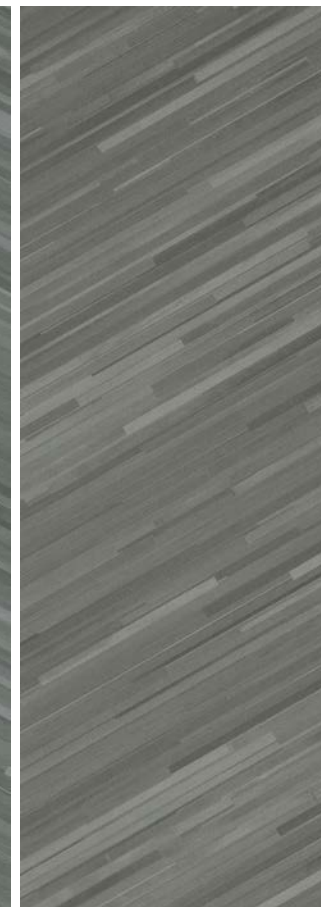
**All technical data was supplied by the manufacturer and is being provided by CMC for informational purposes only. Exact test results should be requested from your CMC contact.



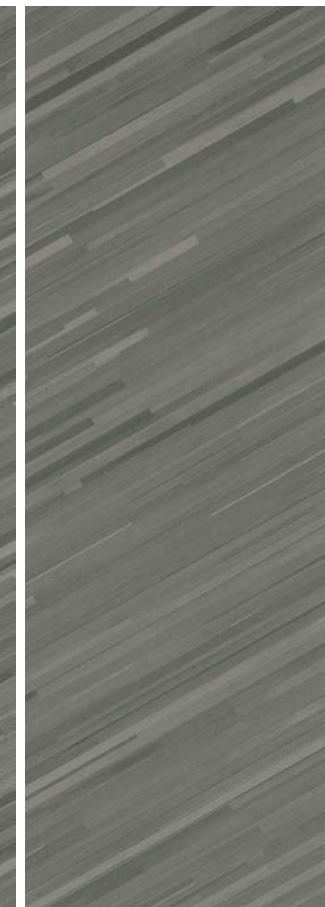
GREY 05



GREY 03



GREY 04



GREY 02



GREY 01



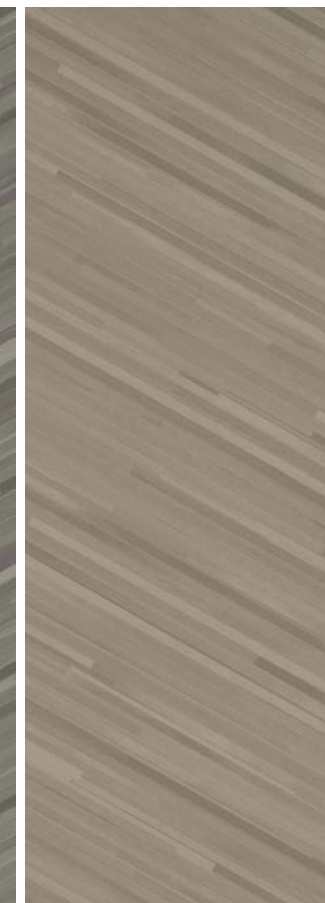
BROWN 05



BROWN 04



BROWN 03



BROWN 02



BROWN 01