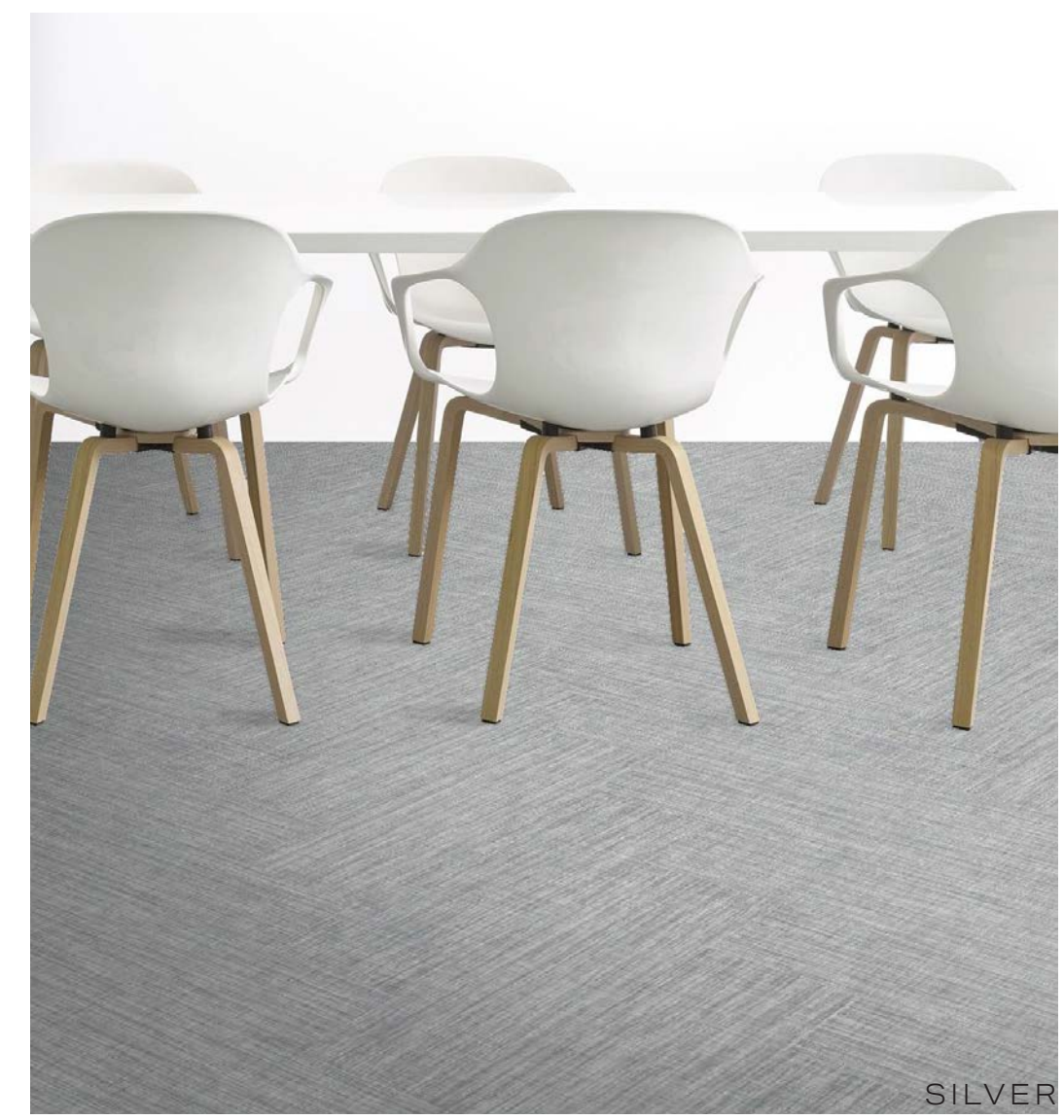




INTERWEAVE

INTERWEAVE LVT BRINGS THE TRADITIONAL LINEN-WEAVE LOOK INTO COMMERCIALLY DESIGNED SPACES FOR A CLEAN, CLASSIC FLOORING OPTION.



TEAL + DARK GREY + LIGHT GREY

**creative
materials
corporation**

SILVER

INTERWEAVE

LUXURY VINYL TILE

SIZES

9"x36"

WEAR LAYER

40 MIL

THICKNESS

3MM

LEAD TIME + LOCATION

2-4 WEEKS DOMESTIC INVENTORY | KOREA

EDGE PROFILE

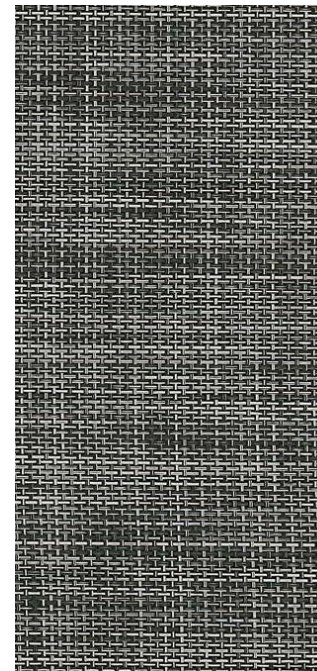
SQUARE

INSTALLATION

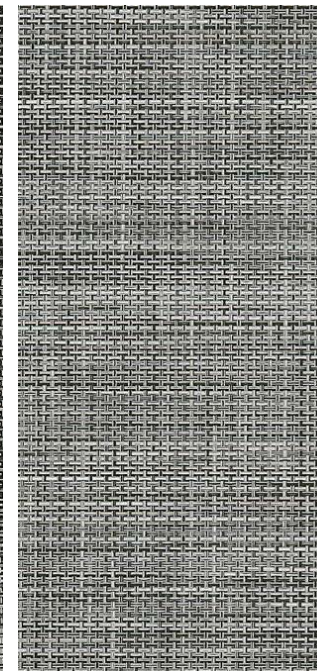
GLUE DOWN

ENVIRONMENTAL

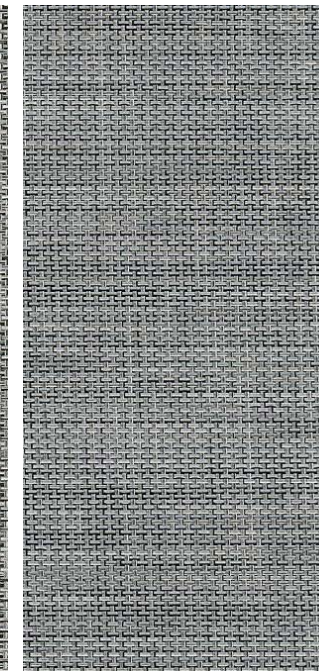
- ENVIRONMENTAL PRODUCT DECLARATION (EPD) - 3RD PARTY CERTIFIED IN ACCORDANCE WITH ISO 14025, EN 15804, AND ISO 21930:2017
- FLOORSCORE® - CERTIFIED
- MR CREDIT: BUILDING PRODUCT DISCLOSURE AND OPTIMIZATION
 - ENVIRONMENTAL PRODUCT DECLARATIONS - OPTION 1
 - ENVIRONMENTAL PRODUCT DECLARATION - RFCI INDUSTRY AVERAGE EPD (50%)
 - EQ CREDIT: LOW EMITTING MATERIALS - OPTION 1
 - PRODUCT CATEGORY CALCULATIONS - FLOORSCORE CERTIFIED



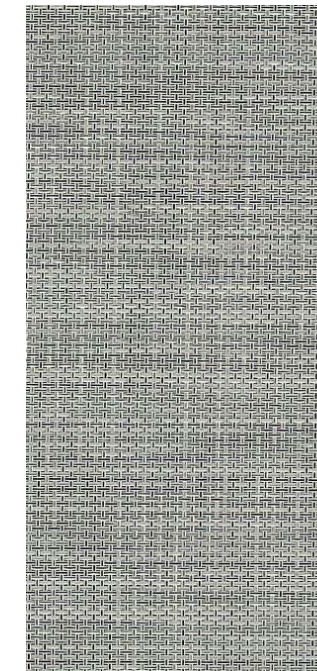
DARK GREY



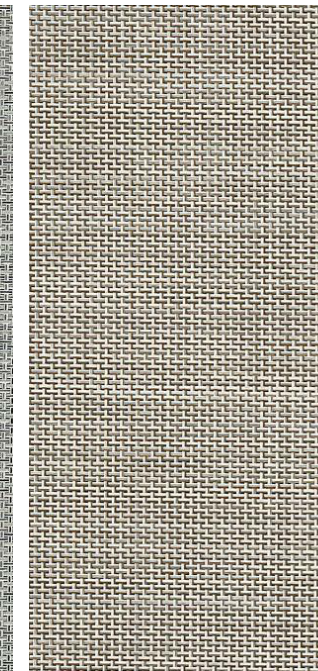
GREY



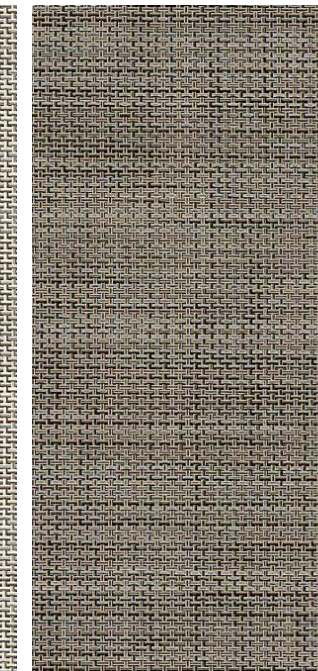
SILVER



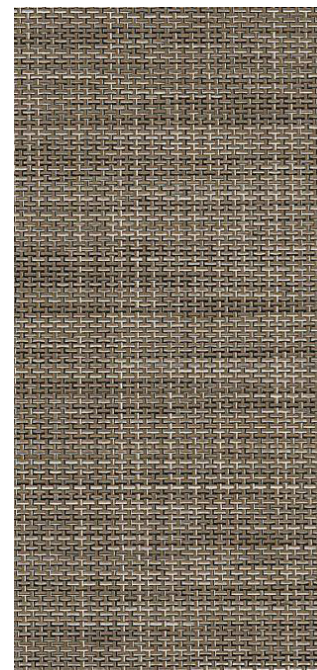
LIGHT GREY



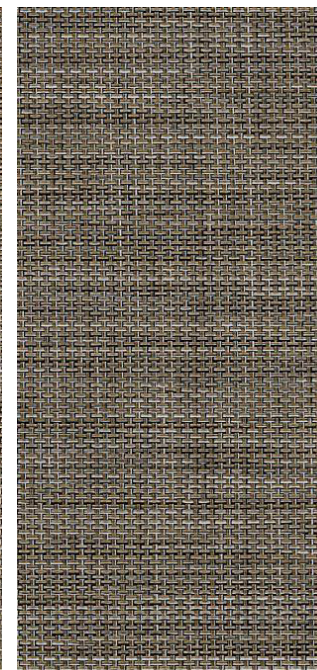
LIGHT BROWN



BROWN



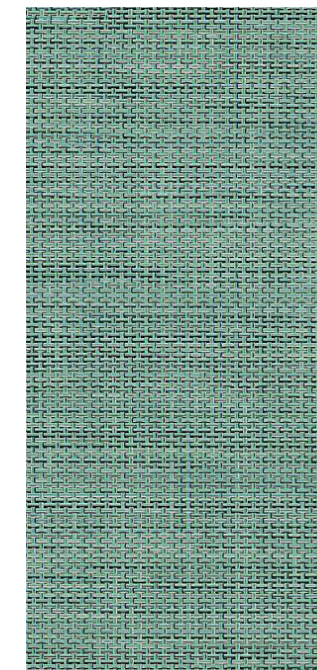
DARK BROWN



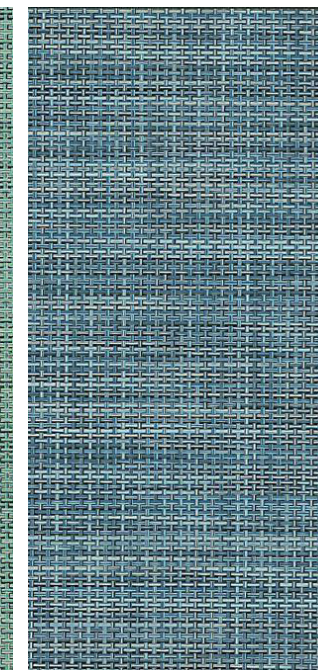
BRONZE



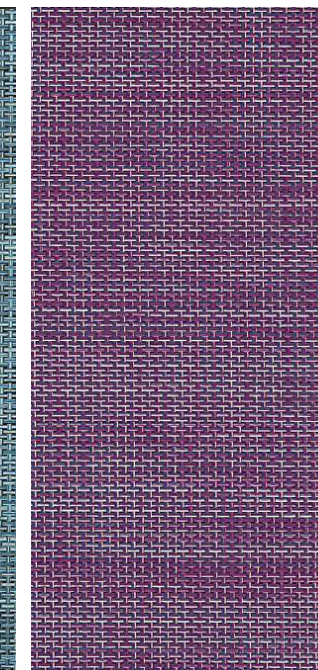
RED-ORANGE



GREEN



TEAL

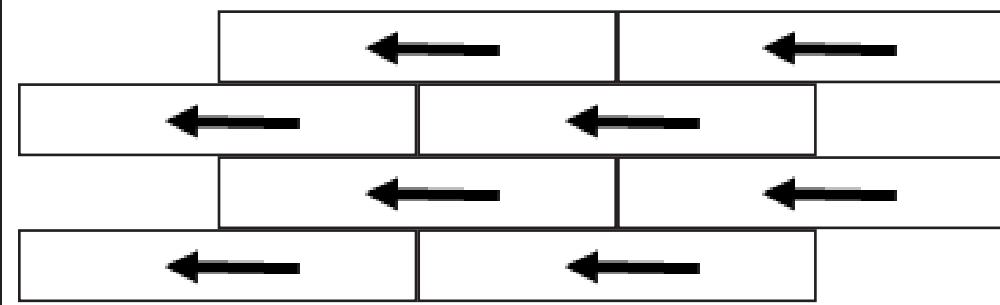


MAGENTA

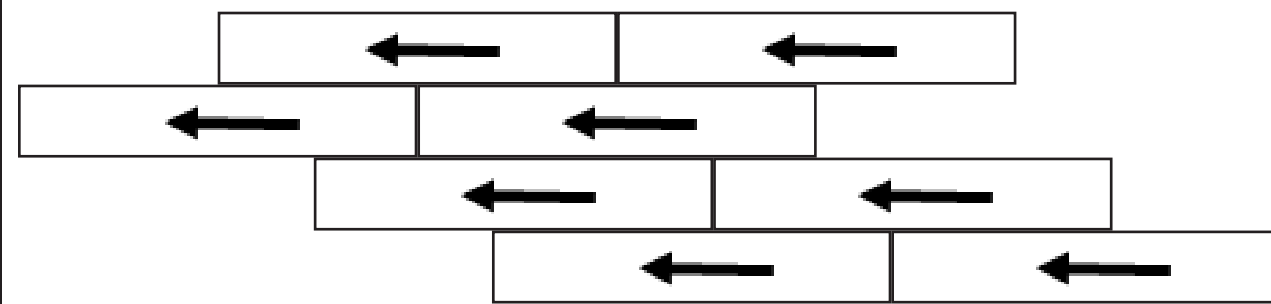
INTERWEAVE

LUXURY VINYL TILE

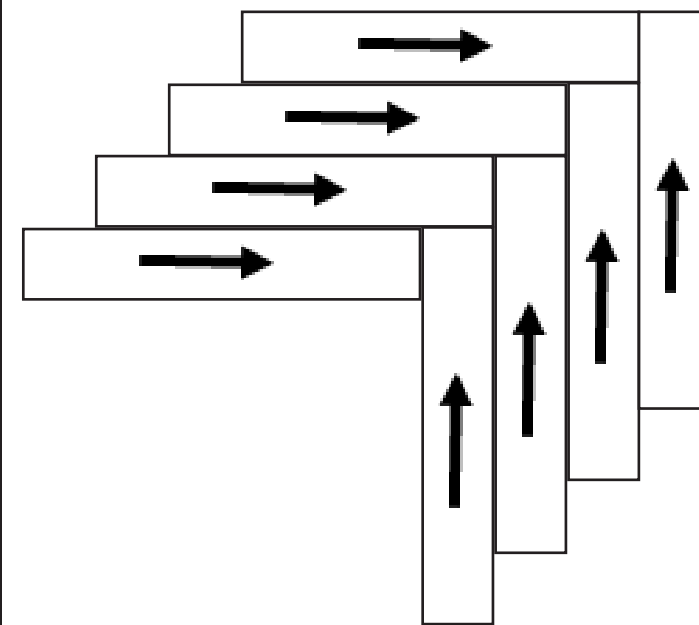
PATTERN OPTIONS



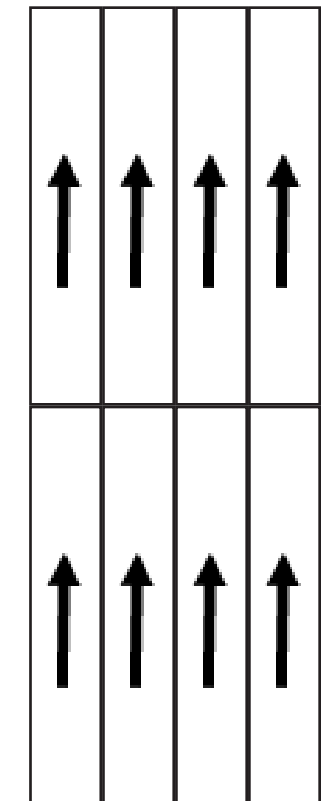
BRICK



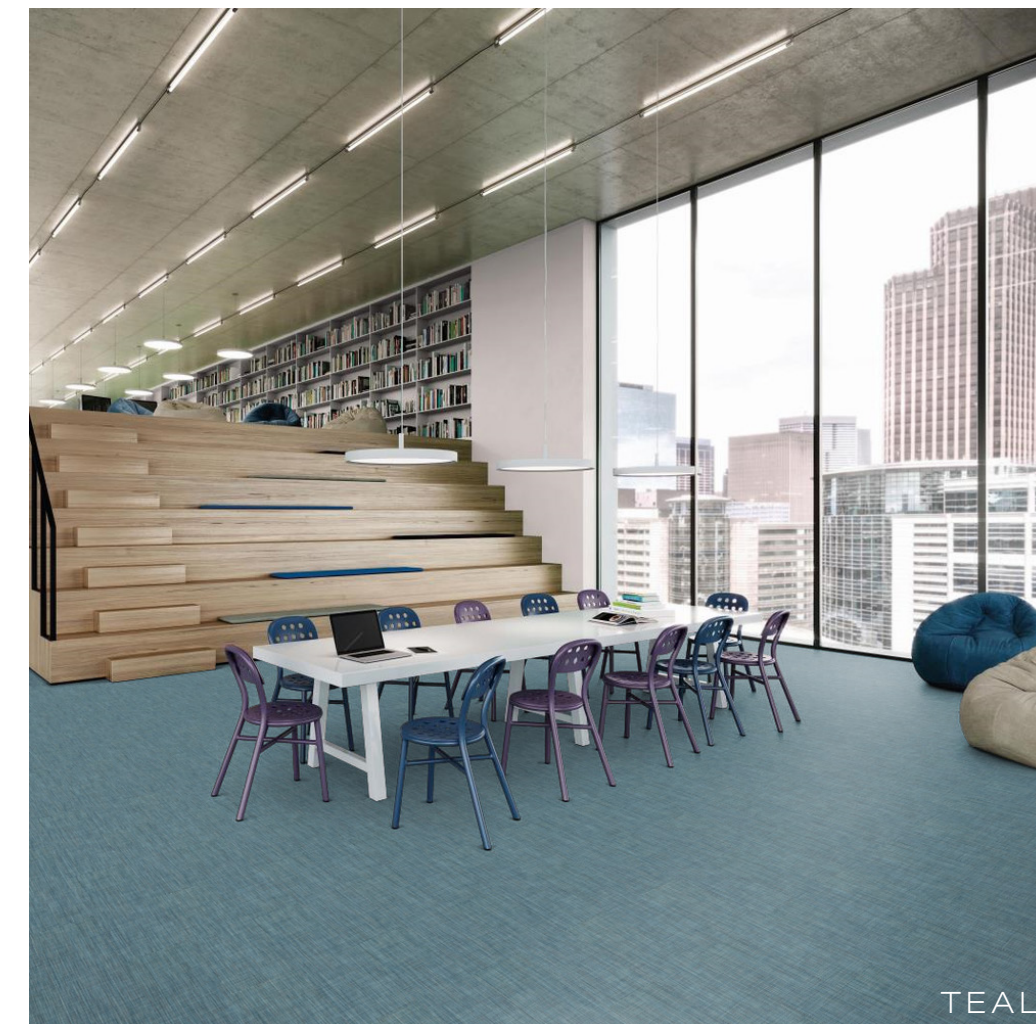
STAGGER



HERRINGBONE



MONOLITHIC



TEAL



SPECIFICATION REFERENCE	TEST METHOD	TEST RESULT
STATIC LOAD	ASTM F970	PASSES- 2,000 PSI
HEAT RESISTANCE	ASTM F1514	PASSES
LIGHT RESISTANCE	ASTM F1515	PASSES
CHEMICAL RESISTANCE	ASTM F925	PASSES
SMOKE DENSITY	ASTM E662	PASSES <450
RADIANT PANEL	ASTM E648	PASSES, CLASS 1
FLEXIBILITY	ASTM F137	PASSES, 1
RESIDUAL INDENTATION	ASTM F1914	PASSES - < 8% AVG/10% SINGLE VALUE
CLASSIFICATION	ASTM F1700	CLASS II

**All technical data was supplied by the manufacturer and is being provided by CMC for informational purposes only. Exact test results should be requested from your CMC contact.