

STITCH

STITCH IS WHEN TEXTILE MEETS LEATHER FOR A TEXTURE INSPIRED COLLECTION. A PALETTE OF WARM AND COOL TONES IS PERFECT FOR MODERN COMMERCIAL SPACES.



LINEN GREY

creative
materials
corporation



LIGHT BROWN LEATHER

STITCH

LUXURY VINYL TILE

SIZES

18"x18"

WEAR LAYER

20 MIL

THICKNESS

3MM

LEAD TIME + LOCATION

2-4 WEEKS DOMESTIC INVENTORY | SOUTH KOREA

EDGE PROFILE

SQUARE

INSTALLATION

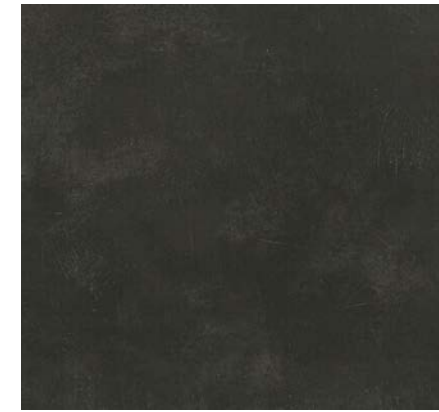
GLUE DOWN

ENVIRONMENTAL

- ENVIRONMENTAL PRODUCT DECLARATION (EPD) - 3RD PARTY CERTIFIED IN ACCORDANCE WITH ISO 14025, EN 15804, AND ISO 21930:2017
- FLOORSCORE® - CERTIFIED
- MR CREDIT: BUILDING PRODUCT DISCLOSURE AND OPTIMIZATION
 - ENVIRONMENTAL PRODUCT DECLARATIONS - OPTION 1
 - ENVIRONMENTAL PRODUCT DECLARATION - RfCI INDUSTRY AVERAGE EPD (50%)
 - EQ CREDIT: LOW EMITTING MATERIALS - OPTION 1
 - PRODUCT CATEGORY CALCULATIONS - FLOORSCORE CERTIFIED



BLACK LINEN



BLACK LEATHER



CHARCOAL LEATHER



GREEN GREY LEATHER



DARK GREY LEATHER



BLUE GREY LEATHER



GREY LINEN



LIGHT GREY LEATHER



OFF-WHITE LINEN



IVORY LINEN



BEIGE LINEN



LIGHT BROWN LEATHER



GREIGE LEATHER



LIGHT BROWN LINEN



BROWN LINEN



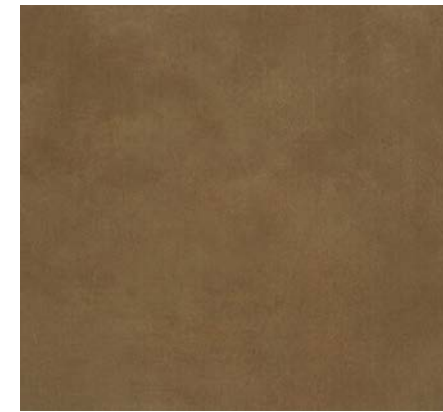
OCHRE LEATHER

NETWORK

LUXURY VINYL TILE



CHOCOLATE LEATHER



BROWN LEATHER

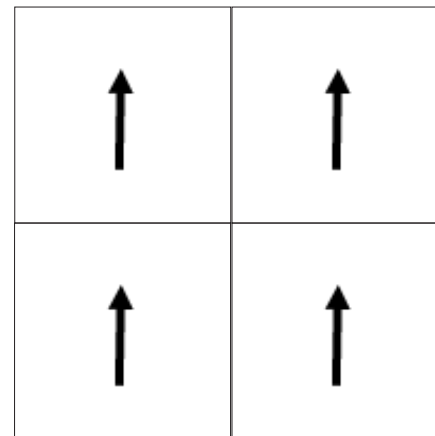


DARK BROWN LINEN

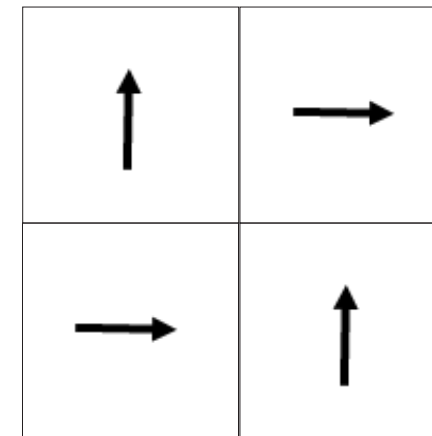


RED BROWN LEATHER

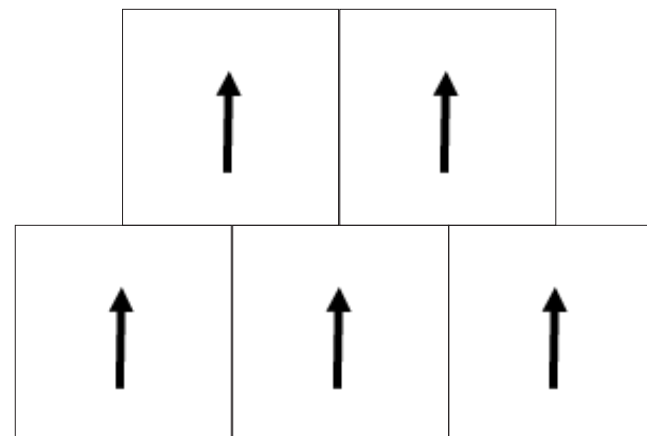
PATTERN OPTIONS



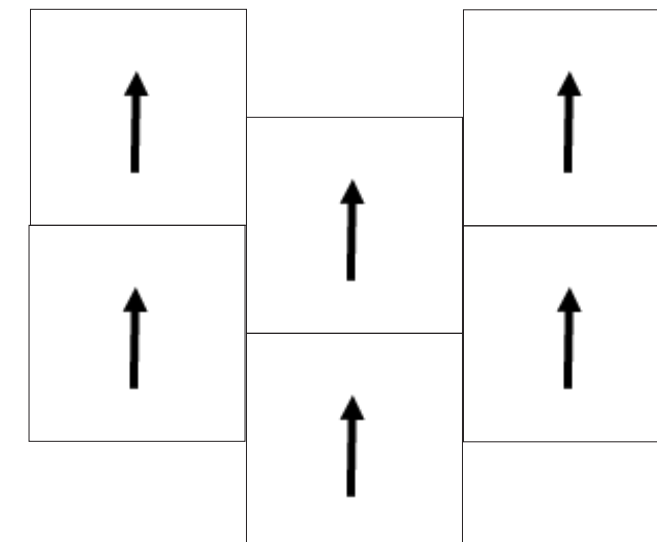
MONOLITHIC



QUARTER TURN



BRICK



ASHLAR

SPECIFICATION REFERENCE	TEST METHOD	TEST RESULT
STATIC LOAD	ASTM F970	PASSES- (MODIFIED) 2,000 PSI
HEAT RESISTANCE	ASTM F1514	PASSES
LIGHT RESISTANCE	ASTM F1515	PASSES
CHEMICAL RESISTANCE	ASTM F925	PASSES
SMOKE DENSITY	ASTM E662	PASSES <450
RADIANT PANEL	ASTM E648	PASSES, CLASS 1
CLASSIFICATION	ASTM F1700	CLASS III, TYPE B

**All technical data was supplied by the manufacturer and is being provided by CMC for informational purposes only. Exact test results should be requested from your CMC contact.

