



AURORA BOREALIS

AURORA BOREALIS IS INSPIRED BY THE BEAUTY OF THE NORTHERN LIGHTS WITH A CONTEMPORARY ABSTRACT LOOK. THE LINEAR, BRUSHSTROKE-LIKE MOVEMENTS ACROSS THE PLANK CREATE OUT-OF-THIS-WORLD DESIGNS.



YELLOW RAY

creative
materials
corporation

BLUE ARC + DARK GREY ARC

AURORA BOREALIS

LUXURY VINYL TILE

SIZES

6"x48"

12"x24"

WEAR LAYER

40 MIL

THICKNESS

2.5MM

LEAD TIME + LOCATION

1-2 WEEKS | USA

EDGE PROFILE

MICRO-BEVEL

INSTALLATION

GLUE DOWN

ENVIRONMENTAL

- RAPIDLY RENEWABLE CONTENT - CONTAINS 3%
- INDOOR AIR QUALITY - FLOORSCORE CERTIFIED; CDPH v1.1-2010
- PRODUCT DECLARATIONS - EPD, HPD
- **LEED SCOREBOARD** - MAY CONTRIBUTE TO LEED CREDITS:
 - LEED 2009: MRc5 REGIONAL MATERIALS; MRc6 RAPIDLY RENEWABLE MATERIALS
 - IEQ4.1 LOW EMITTING ADHESIVES
 - IEQ4.3 LOW EMITTING MATERIALS
 - FLOORING LEED v4: BUILDING PRODUCT DISCLOSURE & OPTIMIZATION EPDs
 - BUILDING PRODUCT DISCLOSURE & OPTIMIZATION - SOURCING RAW MATERIALS
 - BUILDING PRODUCT DISCLOSURE & OPTIMIZATION - MATERIAL INGREDIENTS
 - IEQc2 - LOW EMITTING MATERIALS

VISIT MM ORIGIN WEBSITE, [MINDFULMATERIALS.ORIGIN.BUILD](https://mindfulmaterials.origin.build), FOR CURRENT TRANSPARENCY INFORMATION

ARC



BLUE



GREEN



YELLOW



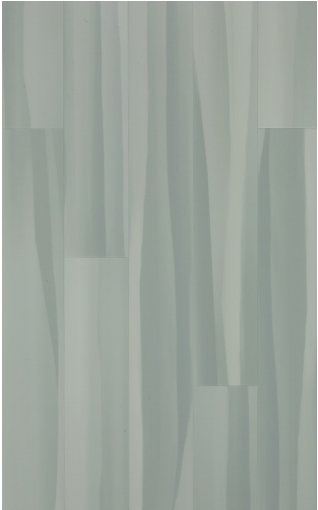
BEIGE



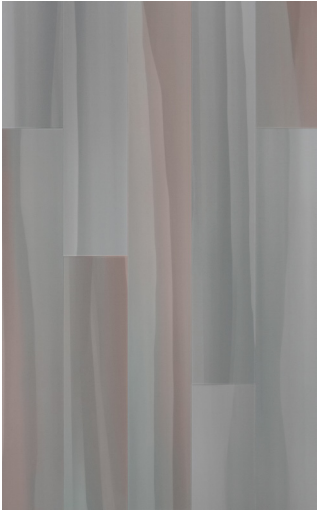
TAUPE



DARK GREY



LIGHT GREY

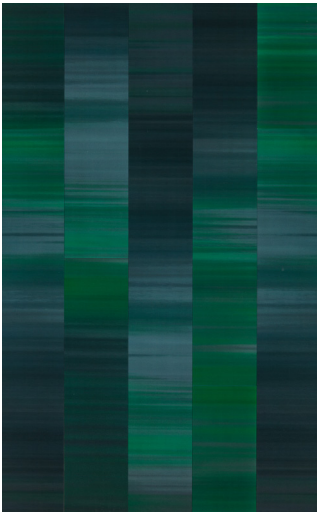


PINK

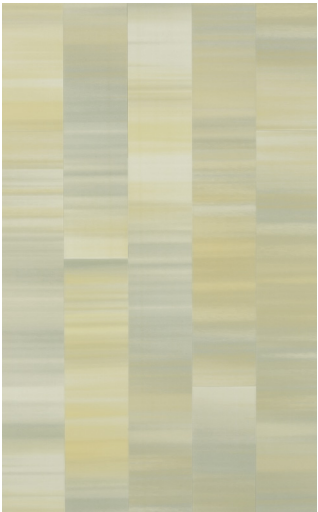
BAND



BLUE



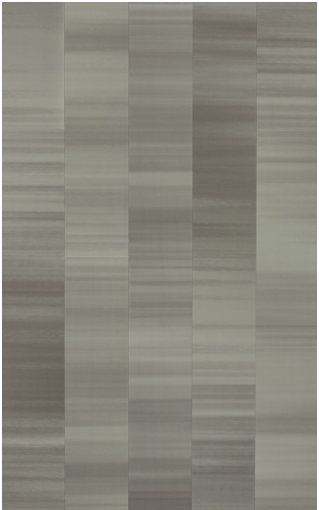
GREEN



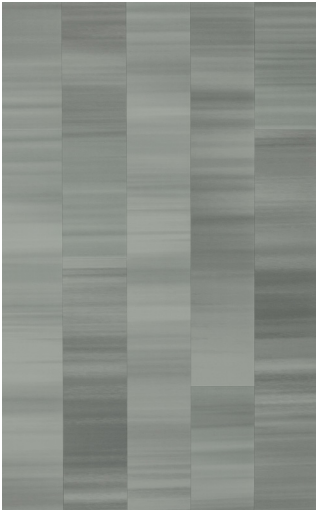
YELLOW



BEIGE



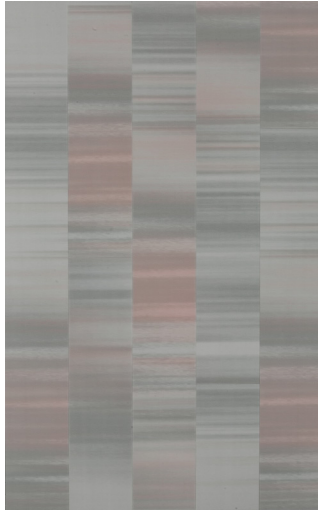
TAUPE



DARK GREY



LIGHT GREY



PINK

AURORA BOREALIS

LUXURY VINYL TILE

SPECIFICATION REFERENCE	TEST METHOD	TEST RESULT
STATIC LOAD	ASTM F970	PASSES- 2,000 PSI; RESIDUAL INDENT <0.005"
HEAT RESISTANCE	ASTM F1514	PASSES
LIGHT RESISTANCE	ASTM F1515	PASSES
CHEMICAL RESISTANCE	ASTM F925	PASSES
SMOKE DENSITY	ASTM E662	PASSES <450
RADIANT PANEL	ASTM E648	PASSES, CLASS 1
FLEXIBILITY	ASTM F137	PASSES, 1" MANDREL
DIMENSIONAL STABILITY	ASTM F2199	PASSES, MAX 0.020"/LFT
SQUARENESS	ASTM F540	PASSES - MAX 0.010"
RESIDUAL INDENTATION	ASTM F1914	PASSES - < 8% AVG/10% SINGLE VALUE
FLOORING RADIANT PANEL	ASTM E648 P	PASSES - CLASS 1; > 0.45 WATTS/CM ²
SLIP RESISTANCE	ASTM C1028	PASSES - >0.5 LEATHER; 0.6 RUBBER
CLASSIFICATION	ASTM F1700	CLASS III, TYPE A+B

**All technical data was supplied by the manufacturer and is being provided by CMC for informational purposes only. Exact test results should be requested from your CMC contact.

RAY



BLUE



GREEN



YELLOW



BEIGE



TAUPE



DARK GREY



LIGHT GREY



PINK



GREEN RAY

