

# NUMBERED UNGLAZED 12"X12"



## DESCRIPTION

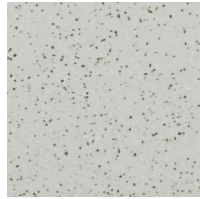
Numbered Unglazed 12"x12" porcelain tile offers a wide range of colors for commercial project interiors of all types.

## COLORS

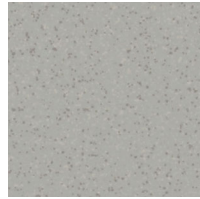
						
White (Matte/rectified, Polished/rectified)	Biscuit (Matte, Polished/rectified)	Ivory (Matte, Polished/rectified)	Vanilla (Matte, Polished/rectified)	Bone (Matte, Polished/rectified, Honed/rectified)	Putty (Matte, Polished/rectified)	Beige (Matte, Polished/rectified)
						
Mocha (Matte, Polished/rectified)	Lemon (Matte, Polished/rectified)	Gold (Matte, Polished/rectified)	Cocoa (Matte, Polished/rectified)	Light Blue (Matte, Polished/rectified)	Blue (Matte, Polished/rectified)	Moss (Matte, Polished/rectified)
						
Lime Green (Matte, Polished/rectified)	Sage (Matte, Polished/rectified)	Olive Green (Matte, Polished/rectified)	Teal (Matte, Polished/rectified)	Silver (Matte, Polished/rectified)	Zinc (Matte, Polished/rectified)	Steel (Matte, Polished/rectified)
						
Metal (Matte, Polished/rectified)	Anthracite (Matte, Polished/rectified)	Fleck Biscuit (Polished/rectified)	Fleck Bone (Polished/rectified)	Fleck Beige (Polished/rectified)	Fleck Putty (Polished/rectified)	Fleck Mocha (Polished/rectified)



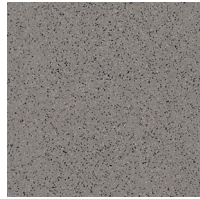
Fleck Cocoa (Polished/rectified)



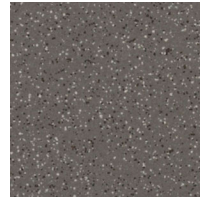
Fleck Silver (Polished/rectified)



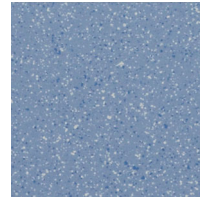
Fleck Zinc (Polished/rectified)



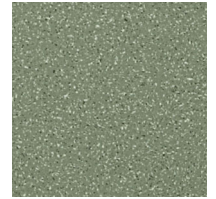
Fleck Steel (Polished/rectified)



Fleck Metal (Polished/rectified)



Fleck Light Blue (Polished/rectified)



Fleck Sage (Polished/rectified)



Fleck Anthracite (Polished/rectified)

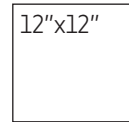
### THICKNESS

8.3mm

### FINISH

Matte  
Polished

### AVAILABLE SIZES



### TECHNICAL DATA\*

Specification Reference	Test Method	Test Result
DCOF	DCOF AcuTest	≥0.42
Water Absorption	ISO 10545-3	≤0.1%
Breaking Strength	ISO 10545-4	≥45N/mm <sup>2</sup> , S≥1500N
Abrasion Resistance	ISO 10545-6	130mm <sup>2</sup>

\*All technical data was supplied by the manufacturer and is being provided by CMC for informational purposes only. Exact test results should be requested from your CMC contact.

