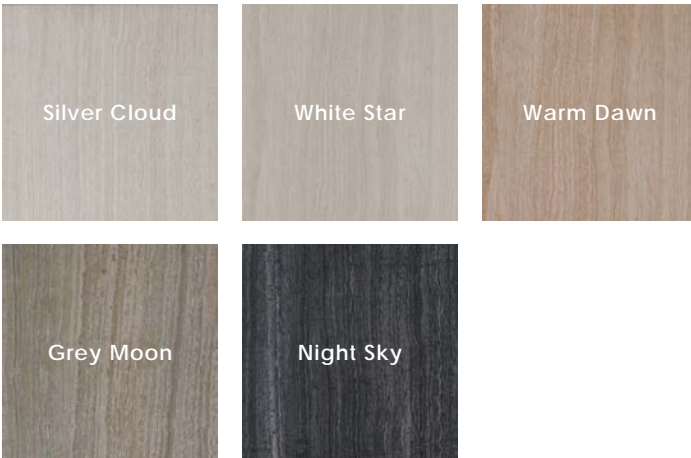




Description

Atmosphere porcelain tile presents linear veining, reminiscent of Eramosa. The distinguishable aesthetic adds flow, whether running the vein in the same direction or a quarter turn for distinction.

Colors



Sizes



Technical Data

Specification Reference	Test Method	Test Result
DCOF	ANSI A326.3	> 0.42
Water Absorption	ASTM C373	< 0.5%
Breaking Strength	ASTM C648	> 400 lbf
PEI	ASTM C1027	IV

Finish & Thickness

Matte | 7mm, 9mm
Finish varies per size and color –
Refer to Color•Size•Finish Matrix

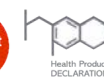
Lead Time

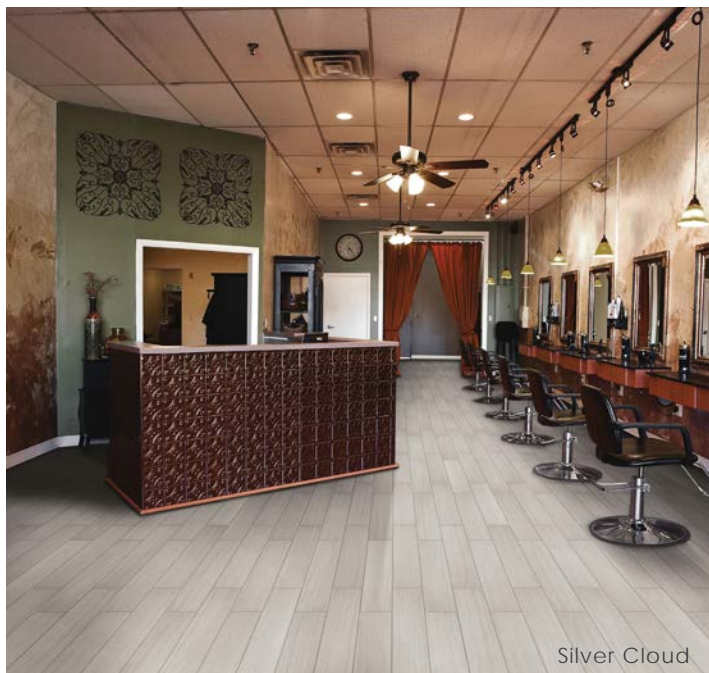
2-3 Weeks

Location

USA

Body Type	Shade Variation
Glazed Color-Body Porcelain	V2





Mosaics

2" x 2" Mosaic on 12" x 12" x 9mm Sheet Matte



Silver Cloud



White Star



Warm Dawn



Grey Moon



Night Sky

Color•Size•Finish Matrix






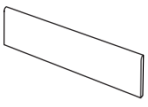
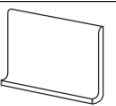
Color — Size & Thickness					
	Silver Cloud	White Star	Warm Dawn	Grey Moon	Night Sky
12"x12"x9mm	Matte	Matte	Matte	Matte	Matte
12"x24"x9mm	Matte	Matte	Matte	Matte	Matte
Bullnose 3"x12"x9mm	Matte	Matte	Matte	Matte	Matte
					
Covebase 6"x12"x7mm	Matte	Matte	Matte	Matte	Matte
					

Chart indicates available size, color, finish and thickness options. Shaded block indicates not available. Sizing is nominal for field tile, trims, and decors.

