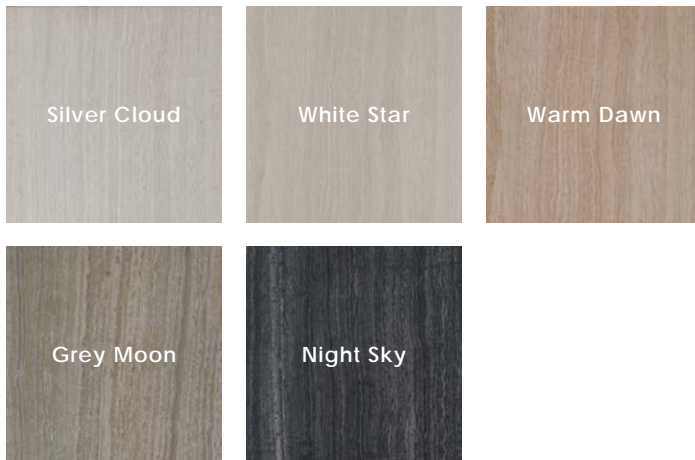




Description

Atmosphere porcelain tile presents linear veining, reminiscent of Eramosa. The distinguishable aesthetic adds flow, whether running the vein in the same direction or a quarter turn for distinction.

Colors



Sizes



Technical Data

| Specification Reference | Test Method | Test Result |
|-------------------------|-------------|-------------|
| DCOF | ANSI A326.3 | > 0.50 Wet |
| Water Absorption | ASTM C373 | < 0.5% |
| Breaking Strength | ASTM C648 | > 400 lbf |
| PEI | ASTM C1027 | IV |

Finish & Thickness

Matte | 7mm, 9mm
Finish varies per size and color –
Refer to Color•Size•Finish Matrix

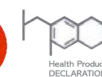
Lead Time

2-3 Weeks

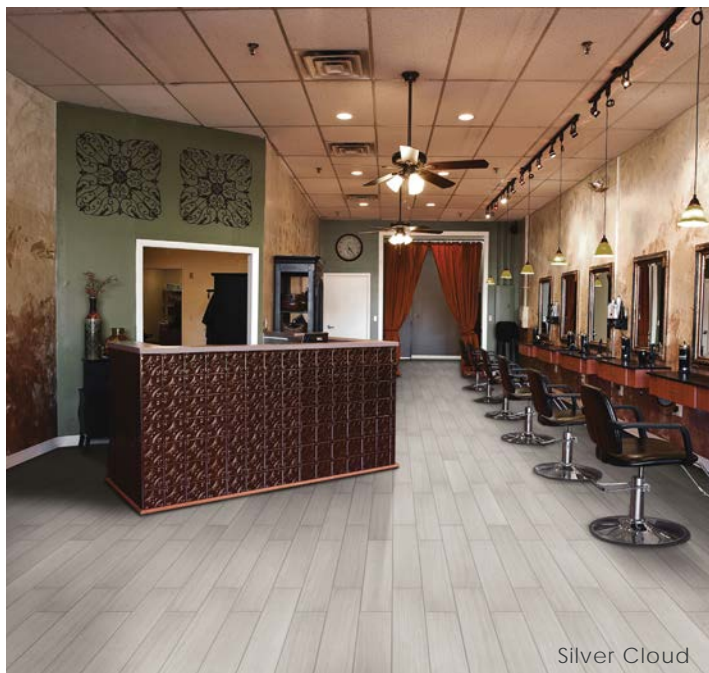
Location

USA

| Body Type | Shade Variation |
|-----------------------------|-----------------|
| Glazed Color-Body Porcelain | V2 |



2024v2



Mosaics

2" x 2" Mosaic on 12" x 12" x 9mm Sheet Matte



Silver Cloud



White Star



Warm Dawn



Grey Moon



Night Sky

Color•Size•Finish Matrix





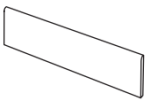
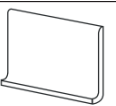
| Color — Size & Thickness |  |  |  |  | |
|---|---|--|---|---|---|
| | Silver Cloud | White Star | Warm Dawn | Grey Moon | Night Sky |
| 12"x12"x9mm | Matte | Matte | Matte | Matte | Matte |
| 12"x24"x9mm | Matte | Matte | Matte | Matte | Matte |
| Bullnose 3"x12"x9mm | Matte | Matte | Matte | Matte | Matte |
|  | | | | | |
| Covebase 6"x12"x7mm | Matte | Matte | Matte | Matte | Matte |
|  | | | | | |

Chart indicates available size, color, finish and thickness options. Shaded block indicates not available. Sizing is nominal for field tile, trims, and decors.

