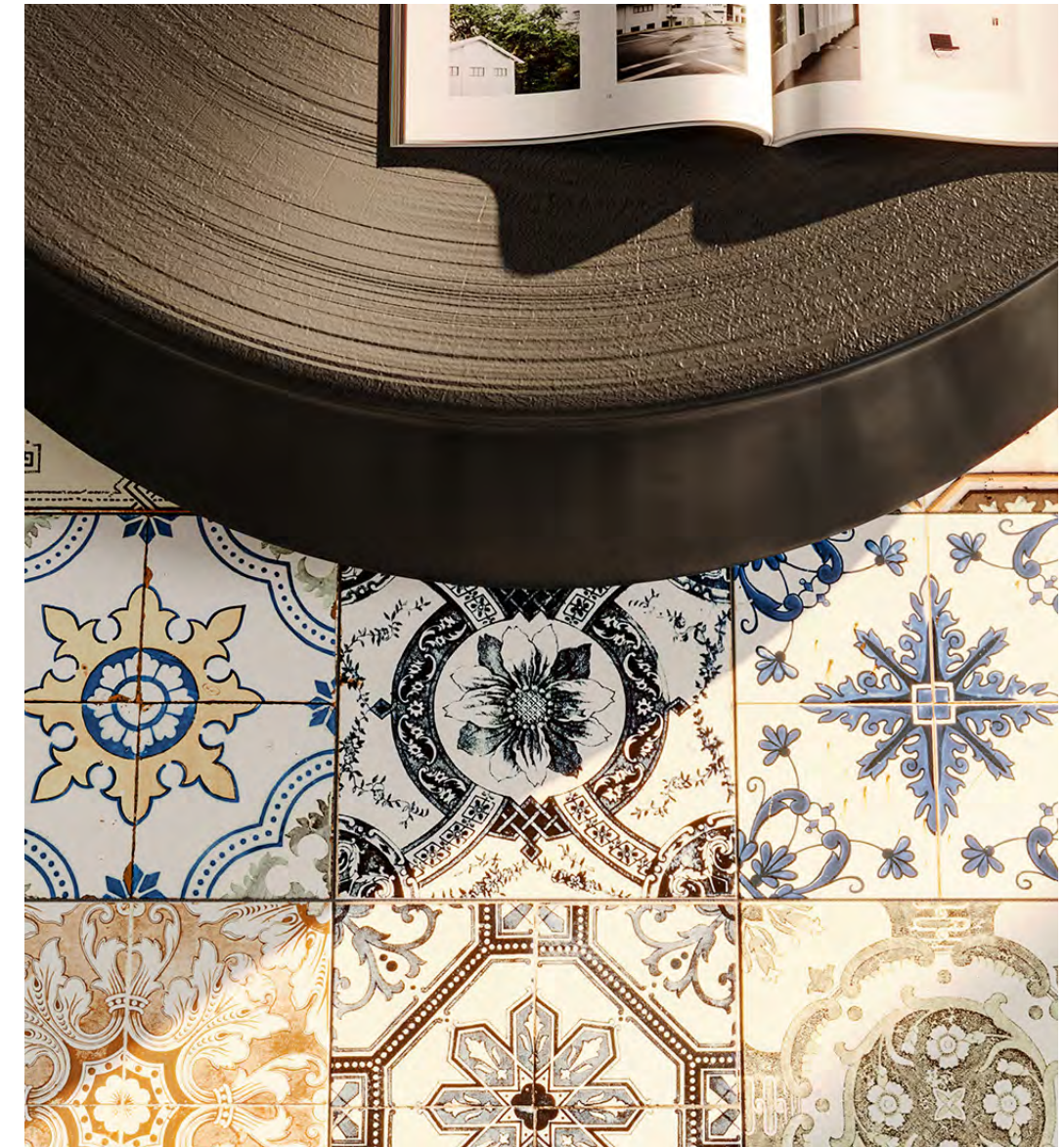


# CASABLANCA

CASABLANCA CONTINUES THE TRADITION OF MOROCCAN INFLUENCES IN A MIXED COLOR PALETTE OR SHADES OF GREY PALETTE. A CONTEMPORARY SOLUTION WITH THE TRADITIONAL ALLURE.



COLOR MIX

creative  
materials  
corporation

GREY MIX

# CASABLANCA

CERAMIC & PORCELAIN TILE

## SIZES

8"x8"

## FINISH

GLOSSY | CERAMIC BODY  
MATTE | PORCELAIN BODY

## THICKNESS

7MM

## LEAD TIME + LOCATION

2-3 WEEKS DOMESTIC INVENTORY | TURKEY

## TECHNICAL DATA

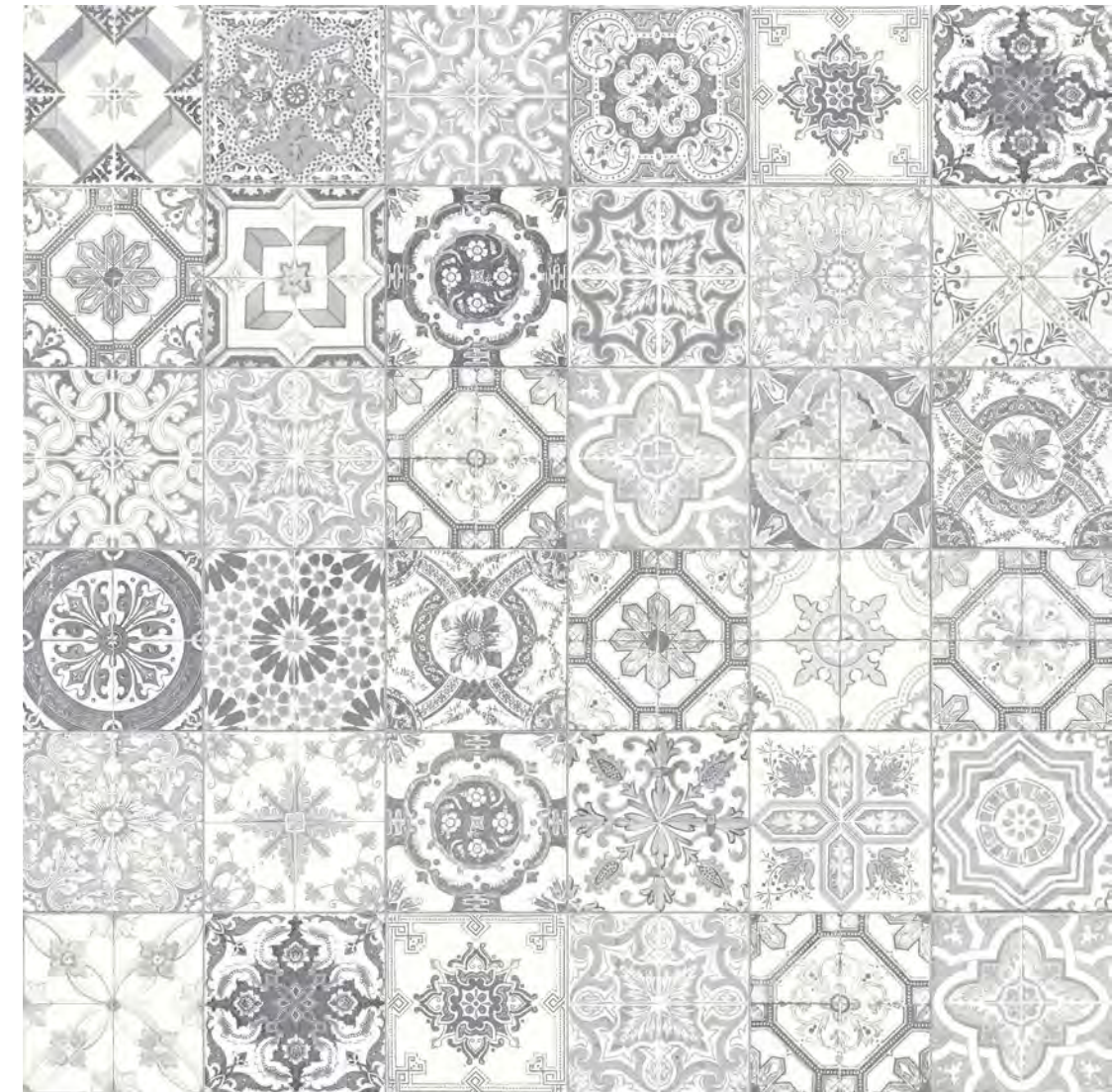
SPECIFICATION REFERENCE	TEST METHOD	TEST RESULT
BREAKING STRENGTH	ISO 10545-4	MATTE IS $\geq 300$ GLOSSY IS $\geq 250$
WATER ABSORPTION	ISO 10545-3	MATTE IS $\leq 0.5\%$ GLOSSY IS $> 0.6\% - < 20\%$
PEI	ISO 10545-7	IV
DCOF	ANSI A326.1	$\geq 0.42^*$

Shade  
V4  
Variation

\*\*All technical data was supplied by the manufacturer and is being provided by CMC for informational purposes only. Exact test results should be requested from your CMC contact. DCOF is NOT APPLICABLE to GLOSSY ceramic, intended for wall use only.



COLOR MIX







GREY MIX



# CASABLANCA

## CERAMIC + PORCELAIN TILE

CHART INDICATES AVAILABLE SIZE + THICKNESS + FINISH OPTIONS. IF GREY BLOCK IS PRESENT, THE PRODUCT IS NOT AVAILABLE IN THAT SIZE. SIZING IS NOMINAL FOR FIELD TILE, TRIMS, AND DECORS.

					
	GREY	COLOR		GREY	COLOR
8"x8"x7MM CERAMIC	GLOSSY	GLOSSY	8"x8"x7MM PORCELAIN	MATTE	MATTE



COLOR MIX