

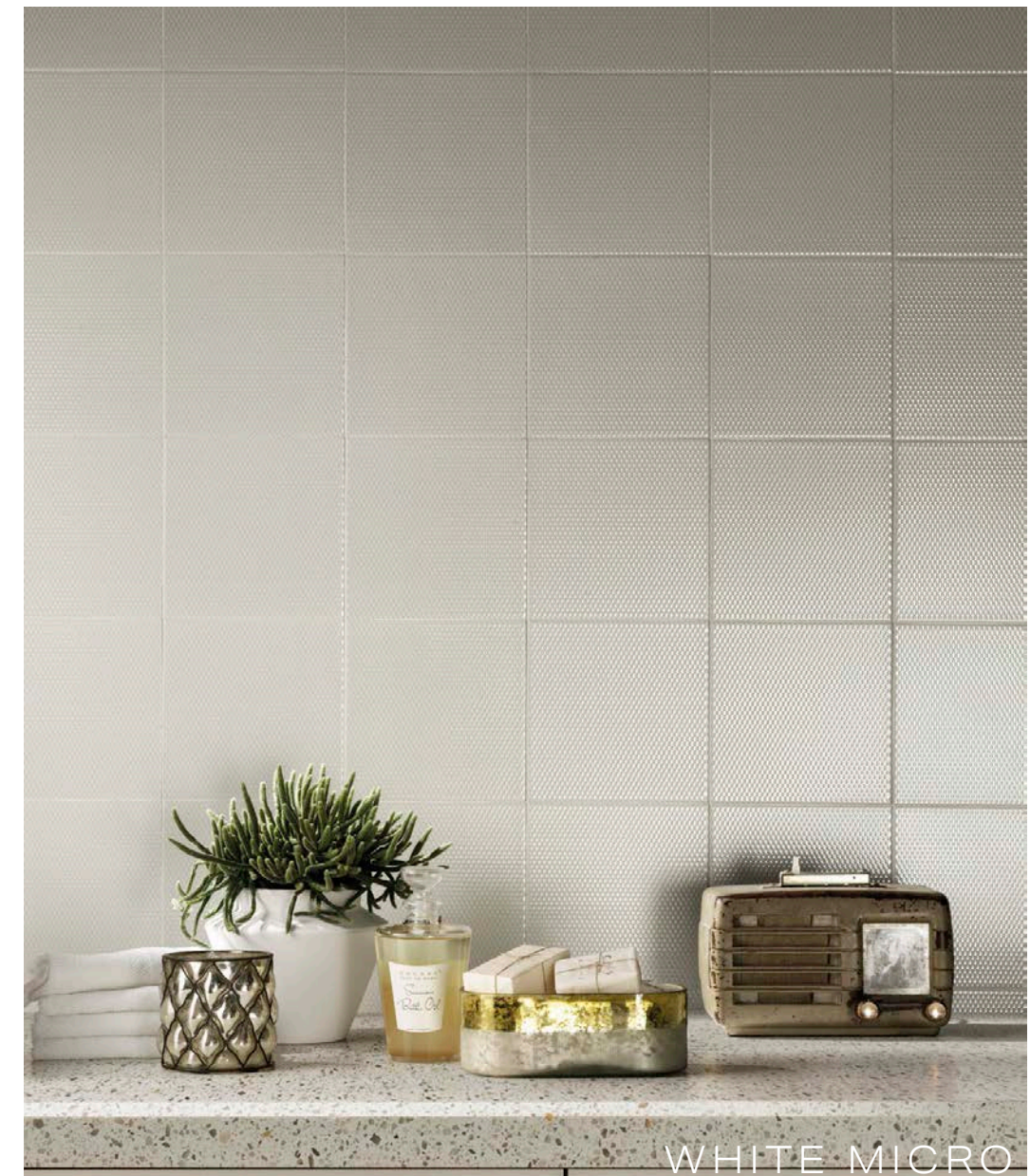
GALVANIZED

GALVANIZED IS INDUSTRIAL WITH ITS WOVEN AND PUNCHED SHEET METAL INSPIRATION. PLAY ON THE SCALE OF METALS AND THE WEAVING OF COLOR-ON-COLOR CREATES A MOVEMENT ACROSS THE SURFACE.



creative
materials
corporation

GREY + GREY MICRO



WHITE MICRO

GALVANIZED

CERAMIC TILE

SIZES



8"x8"

FINISH

GLOSSY

THICKNESS

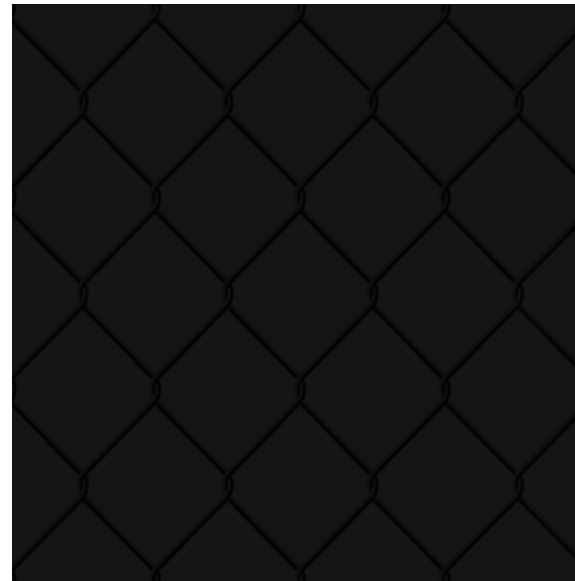
7MM

LEAD TIME + LOCATION

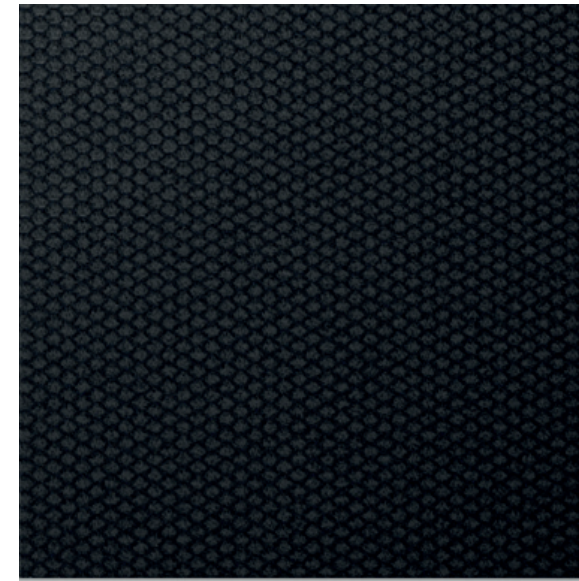
8-10 WEEKS | ITALY

TECHNICAL DATA

SPECIFICATION REFERENCE	TEST METHOD	TEST RESULT
BREAKING STRENGTH	EN 10545-4	≥1700N
WATER ABSORPTION	EN 10545-3	≥16%
DCOF	ANSI A326.1	<0.42



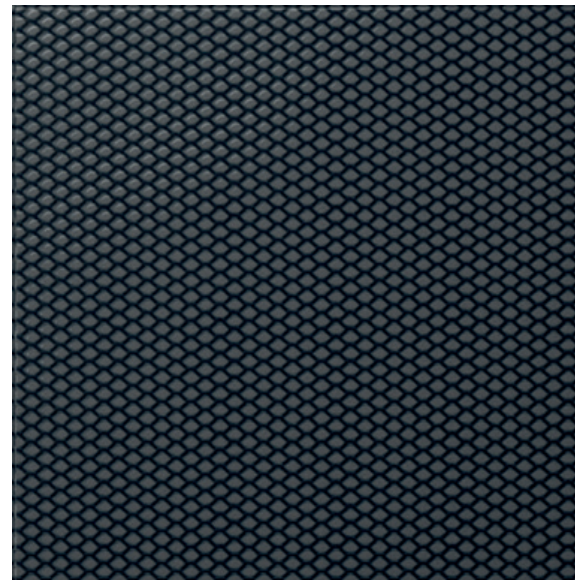
BLACK



BLACK MICRO



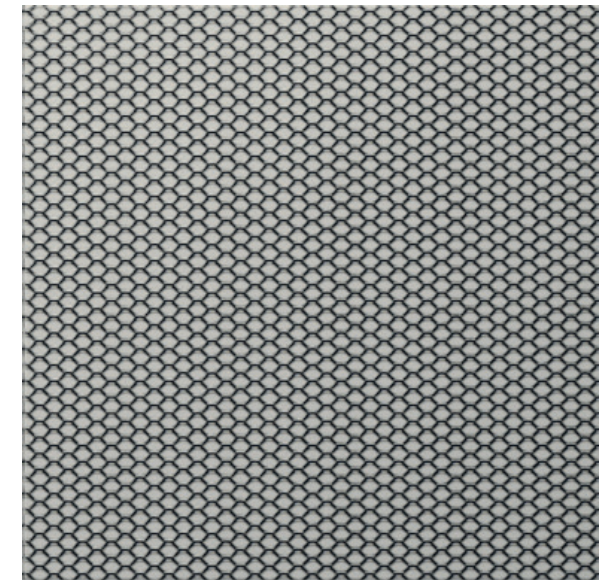
GREY



GREY MICRO



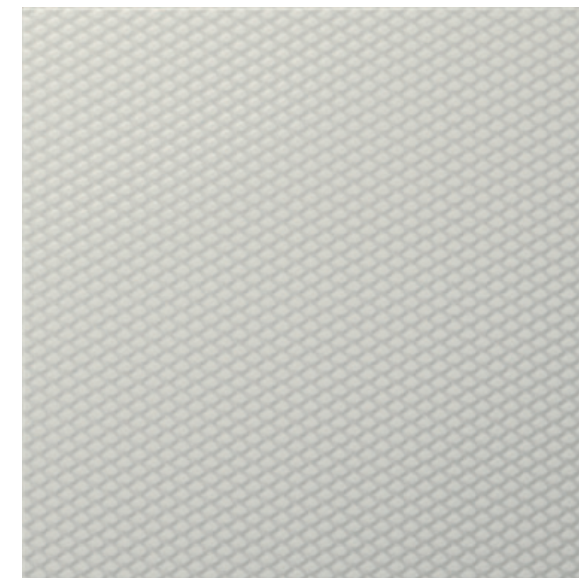
BLACK AND WHITE



BLACK AND WHITE MICRO



WHITE



WHITE MICRO




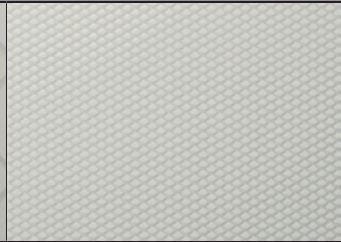

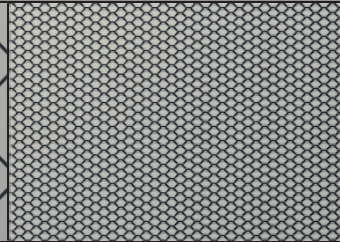

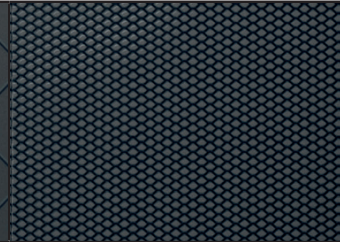


Shade
V2
variation

*Ceramic is intended for wall use only. All technical data was supplied by the manufacturer and is being provided by CMC for informational purposes only. Exact test results should be requested from your CMC contact.

GALVANIZED

CERAMIC TILE

CHART INDICATES AVAILABLE SIZE + THICKNESS + FINISH OPTIONS. IF GREY BLOCK IS PRESENT, THE PRODUCT IS NOT AVAILABLE IN THAT SIZE. SIZING IS NOMINAL FOR FIELD TILE, TRIMS, AND DECORS.

								
	WHITE	WHITE MICRO	BLACK AND WHITE	BLACK AND WHITE MICRO	GREY	GREY MICRO	BLACK	BLACK MICRO
8"x8"x7MM	GLOSSY	GLOSSY	GLOSSY	GLOSSY	GLOSSY	GLOSSY	GLOSSY	GLOSSY



BLACK, BLACK MICRO, BLACK & WHITE