

WOOD COLLECTION 03

creative
materials
corporation

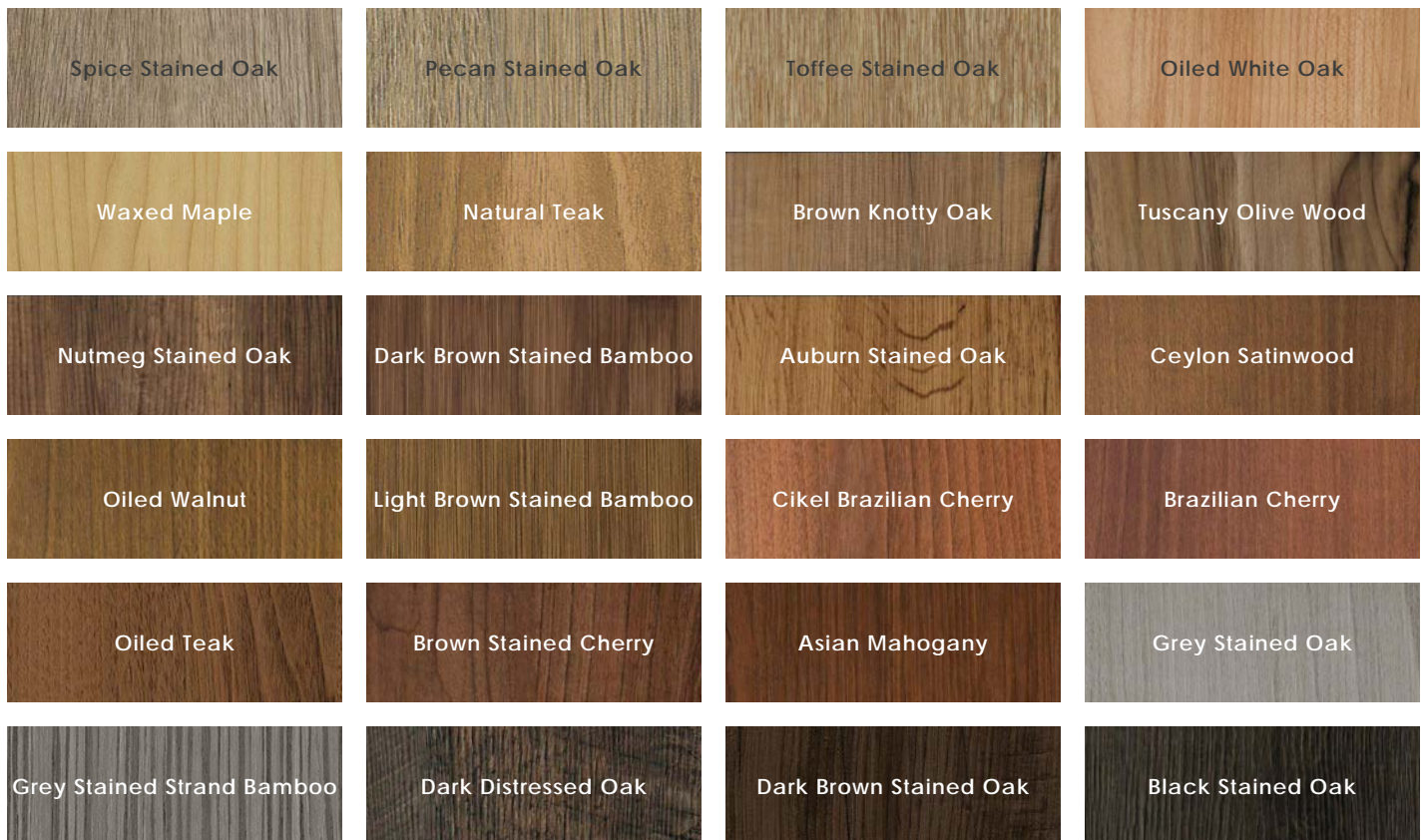


Dark Brown Stained

Description

Wood Collection 03 contains a great mix of wood aesthetics including bamboo, olive wood, and teak. With complement collections, such as Wood Collection 01 and Wood Collection 02, you're sure to fit the right look.

Colors





Sizes

6"x36"

Wear Layer & Thickness

20 Mil | 3mm

Edge Profile

Square

Lead Time

2-4 Weeks
Domestic Inventory

Location

South Korea

Technical Data

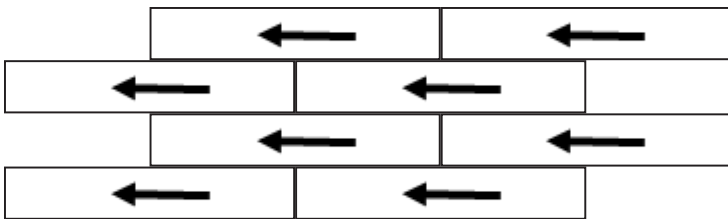
| Specification Reference | Test Method | Test Result |
|-------------------------|-------------|------------------------|
| Static Load | ASTM F970 | Passes - 2,000 PSI |
| Heat Resistance | ASTM F1514 | Passes |
| Light Resistance | ASTM F1515 | Passes |
| Chemical Resistance | ASTM F925 | Passes |
| Smoke Density | ASTM E662 | Passes < 450 |
| Radiant Panel | ASTM E648 | Passes, Class 1 |
| Flexibility | ASTM F137 | Passes, 1" Mandrel |
| Dimensional Stability | ASTM F2199 | Passes, Max 0.020" /ft |
| Squareness | ASTM F540 | Passes, Max 0.010" |
| Residual Indentation | ASTM F1914 | Passes < 8% Avg. |
| Flooring Radiant Panel | ASTM E648P | Passes, Class 1 |
| Classification | ASTM F1700 | Class III, Type B |

| Body Type | Installation |
|-------------------------|--------------|
| Luxury Vinyl Tile (LVT) | Glue Down |

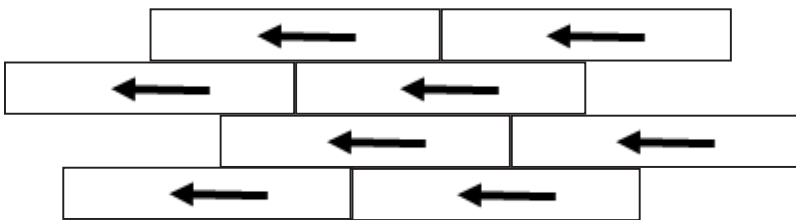




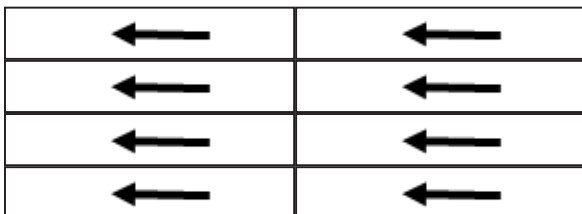
Patterns



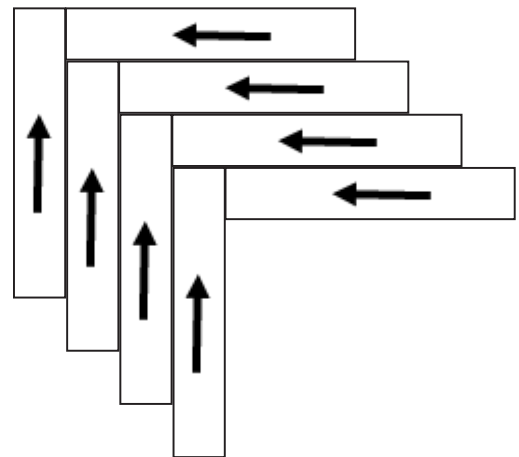
Brick



Stagger



Monolithic



Herringbone

WOOD COLLECTION 03

creative
materials
corporation

Color•Size•Finish Matrix

| | | | | | | |
|-----------------------------------|-------------------|-------------------|--------------------|-----------------|-------------|--------------|
| Color — Size & Thickness | | | | | | |
| 6" x36" x3mm | Spice Stained Oak | Pecan Stained Oak | Toffee Stained Oak | Oiled White Oak | Waxed Maple | Natural Teak |

| | | | | | | |
|-----------------------------------|------------------|--------------------|--------------------|---------------------------|--------------------|------------------|
| Color — Size & Thickness | | | | | | |
| 6" x36" x3mm | Brown Knotty Oak | Tuscany Olive Wood | Nutmeg Stained Oak | Dark Brown Stained Bamboo | Auburn Stained Oak | Ceylon Satinwood |

| | | | | | | |
|-----------------------------------|--------------|----------------------------|------------------------|------------------|------------|----------------------|
| Color — Size & Thickness | | | | | | |
| 6" x36" x3mm | Oiled Walnut | Light Brown Stained Bamboo | Cikel Brazilian Cherry | Brazilian Cherry | Oiled Teak | Brown Stained Cherry |

| | | | | | | |
|-----------------------------------|----------------|------------------|----------------------------|---------------------|------------------------|-------------------|
| Color — Size & Thickness | | | | | | |
| 6" x36" x3mm | Asian Mahogany | Grey Stained Oak | Grey Stained Strand Bamboo | Dark Distressed Oak | Dark Brown Stained Oak | Black Stained Oak |

Chart indicates available size, color, finish and thickness options. Shaded block indicates not available. Sizing is nominal for field tile, trims, and decors.



v2