



Sand (Standard Thickness 9 mm)

Description

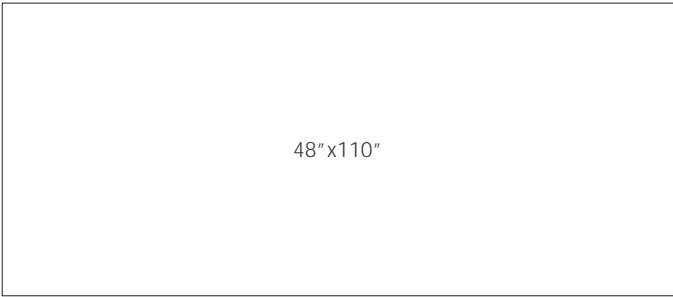
Composite porcelain tile was inspired by the basic principles of mixing and molding the earth with liquid. This mixture is then pressed into timber frames to solidify. This age-old technique was rediscovered by studying historical artifacts, leading to a new surface that exudes an eternal allure.

Colors



Sand Compressed

Size



48"x110"

Finish & Thickness

Natural | 6mm

Lead Time

8-10 Weeks

Location

Italy

Technical Data

Specification Reference	Test Method	Test Result
DCOF	ANSI A326.3	Natural > 0.42 Wet
Water Absorption	ISO 10545-3	< 0.5%
Breaking Strength	ISO 10545-4	R>35 N/mm², S>700N
Deep Abrasion Resistance	ISO 105456-6	< 175 mm³

Body Type	Shade Variation
Unglazed Porcelain	V2

