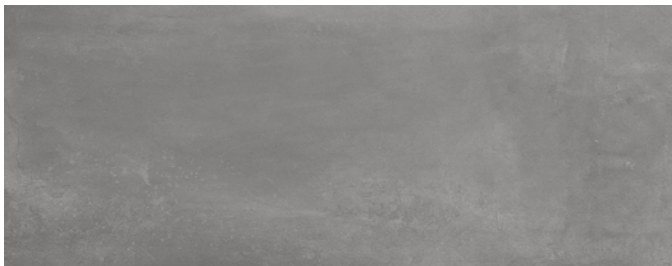




Description

Metal Effects porcelain tile explores the different ways metal textures reflect light and cast shadows. Subtle color changes and a dramatic raked texture option allow harmonious backgrounds as well as stand-out feature walls. Create unity across your space with continuing the design by use of the gauged porcelain panels and pavers.

Color



Steel

Finish & Thickness

Matte | 6mm

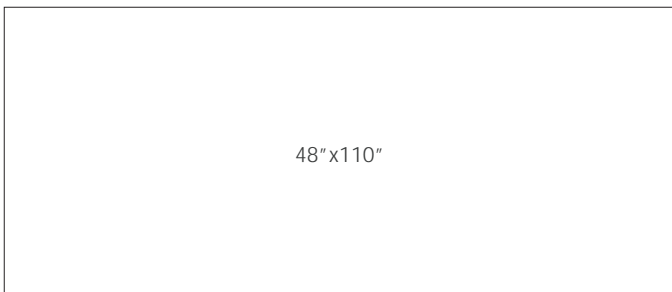
Lead Time

8-10 Weeks

Location

Italy

Size



48"x110"

Technical Data

Specification Reference	Test Method	Test Result
DCOF	ANSI A326.3	> 0.42 Wet
Water Absorption	ISO 10545-3	< 0.1%
Deep Abrasion Resistance	ISO 10545-6	< 150mm ³

Body Type	Shade Variation
Unglazed Porcelain	V2

