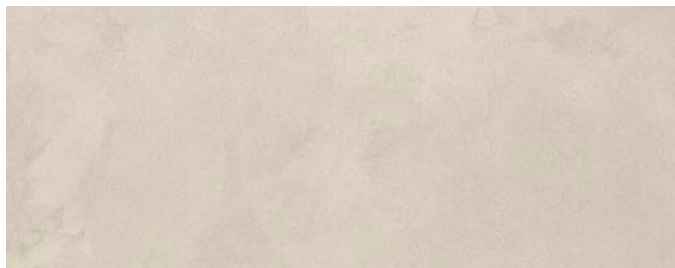




## Description

Midland Concrete porcelain tile is a metamorphosis of concrete through depth and color saturation. Careful consideration for casts, including irregular surfaces. The details of blemishes are marks of beauty. Thoughtful complements round out the contemporary aesthetic.

## Colors



Ivory

## Finish & Thickness

Matte | 6mm

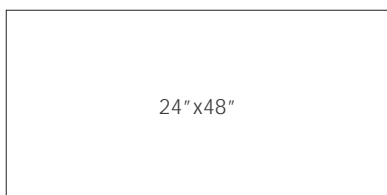
## Lead Time

8-10 Weeks

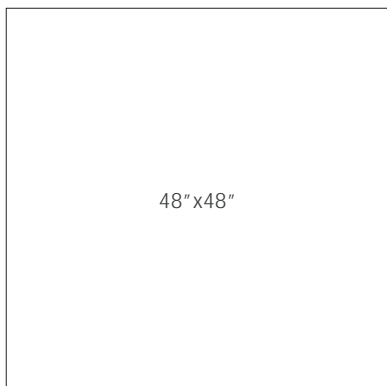
## Location

Italy

## Sizes



24"x48"



48"x48"

## Technical Data

Specification Reference	Test Method	Test Result
DCOF	ANSI A326.3	> 0.42 Wet
Water Absorption	ISO 10545-3	< 0.5%
Breaking Strength	ISO 10545-4	R>35 N/mm <sup>2</sup> , S>1300N
Deep Abrasion Resistance	ISO 10545-6	< 175mm <sup>3</sup>

Body Type	Shade Variation
Unglazed Porcelain	V2



2025