



Description

Interlace porcelain tile is an enduring style influenced by modern geometric compositions. With delicate graphic designs and inviting color palettes, the Interlace collection offers a new and modern interpretation of encaustic tiles.

Colors



Light Grey



Blue Grey

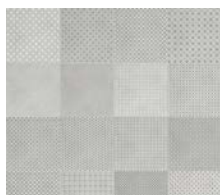


Grey



Dark Grey

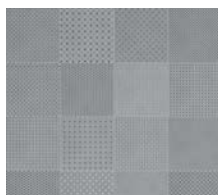
Patchwork Colors



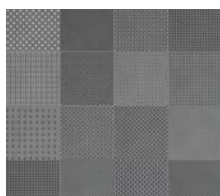
Light Grey
Patchwork



Blue Patchwork



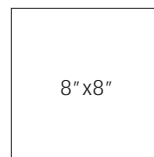
Grey Patchwork



Dark Grey
Patchwork



Sizes



Finish & Thickness

Matte, 9mm |
Refer to Color • Size • Finish Matrix

Location

Turkey

Lead Time

2-3 weeks Domestic Inventory

Technical Data

Specification Reference	Test Method	Test Result
DCOF	ANSI A326.3	Interior, Wet Plus (>0.50 Wet)
Water Absorption	ASTM C373	< 0.5%
Breaking Strength	ASTM C648	> 310 lbf

Body Type	Shade Variation
Glazed Non Color-Body Porcelain	Solid • V2
	Patchwork • V4

Color•Size•Finish Matrix

Color — Size & Thickness				
	Light Grey	Blue Grey	Grey	Dark Grey
Hexagon 8.5"x10"x9mm	Matte	Matte	Matte	Matte

Color — Size & Thickness				
	Light Grey	Blue	Grey	Dark Grey
Hexagon 8.5"x10"x9mm	Matte	Matte	Matte	Matte

Color — Size & Thickness				
	Light Grey	Blue	Grey	Dark Grey
8"x8"x9mm	Matte	Matte	Matte	Matte

Chart indicates available size, color, finish and thickness options. Shaded block indicates not available. Sizing is nominal for field tile, trims, and decors.

