



Linen Crosscut

## Description

Montera reflects the natural calm of limestone interpreted through a modern, tonal viewpoint. Soft gradients, refined textures, and earthen shades create a surface that feels grounded yet elevated, offering visual clarity across a wide range of interior environments. Each tone is designed to support cohesive material palettes, making Montera a foundational element in contemporary design.

## Color



Linen Crosscut

## Technical Data

Specification Reference	Test Method	Test Result
DCOF	ANSI A326.3	Matte • Exterior, Wet (> 0.55 Dry)
		Textured • Exterior, Wet (> 0.55 Dry)
		Honed • Interior, Dry (> 0.42 Dry)
Water Absorption	ASTM C373	< 0.1%
Breaking Strength	ASTM C648	6mm • > 310 lbf
Deep Abrasion Resistance	ASTM C1243	Honed • < 140mm <sup>3</sup>
		Matte • < 120mm <sup>3</sup>
		Textured • < 120mm <sup>3</sup>
<b>Body Type</b>	<b>Shade Variation</b>	
Unglazed Porcelain	V2	

## Finish & Thickness

Honed, Matte, Textured | 6mm

## Lead Time

2-3 Weeks

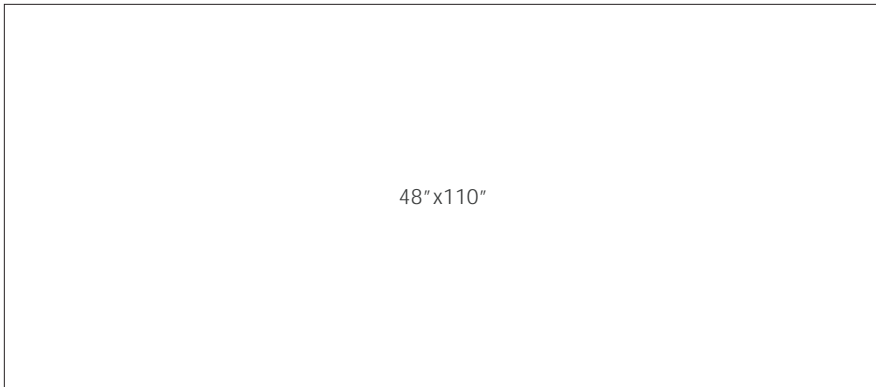
## Availability

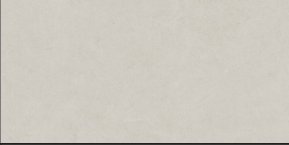
Domestic Inventory



2026v2

## Size



Color — Size & Thickness	
	<b>Linen Crosscut</b>
Gauged 48"x110"x6mm Rectified	Honed Matte
Number of Faces	10
Gauged 63"x126"x6mm Rectified	Honed Matte Textured
Number of Faces	8



2026v2