

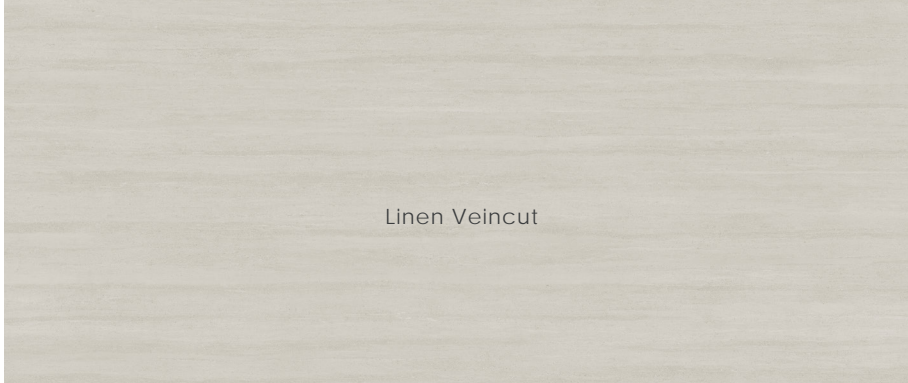


Linen Crosscut

Description

Montera reflects the natural calm of limestone interpreted through a modern, tonal viewpoint. Soft gradients, refined textures, and earthen shades create a surface that feels grounded yet elevated, offering visual clarity across a wide range of interior environments. Each tone is designed to support cohesive material palettes, making Montera a foundational element in contemporary design.

Color



Linen Veincut

Technical Data

Specification Reference	Test Method	Test Result
DCOF	ANSI A326.3	Matte • Exterior, Wet (> 0.55 Dry)
		Honed • Interior, Dry (> 0.42 Dry)
Water Absorption	ASTM C373	< 0.1%
Breaking Strength	ASTM C648	6mm • > 310 lbf
Deep Abrasion Resistance	ASTM C1243	Honed • < 140mm ³
		Matte • < 120mm ³
Body Type		Shade Variation
Unglazed Porcelain		V2

Finish & Thickness

Honed, Matte | 6mm

Lead Time

2-3 Weeks

Availability

Domestic Inventory

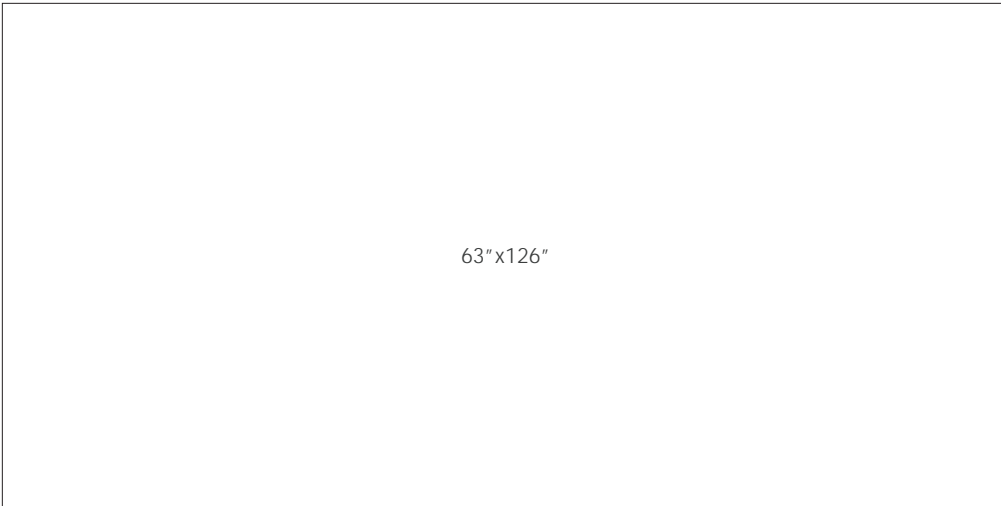
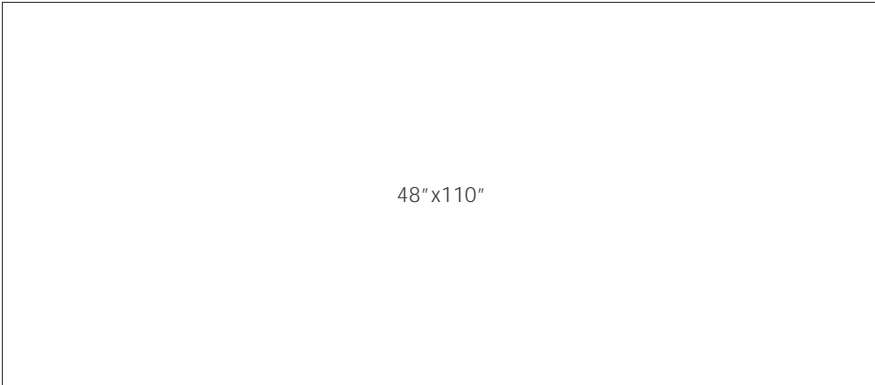


2026v2

MONTERA GAUGED

creative
materials
corporation

Size



2026v2