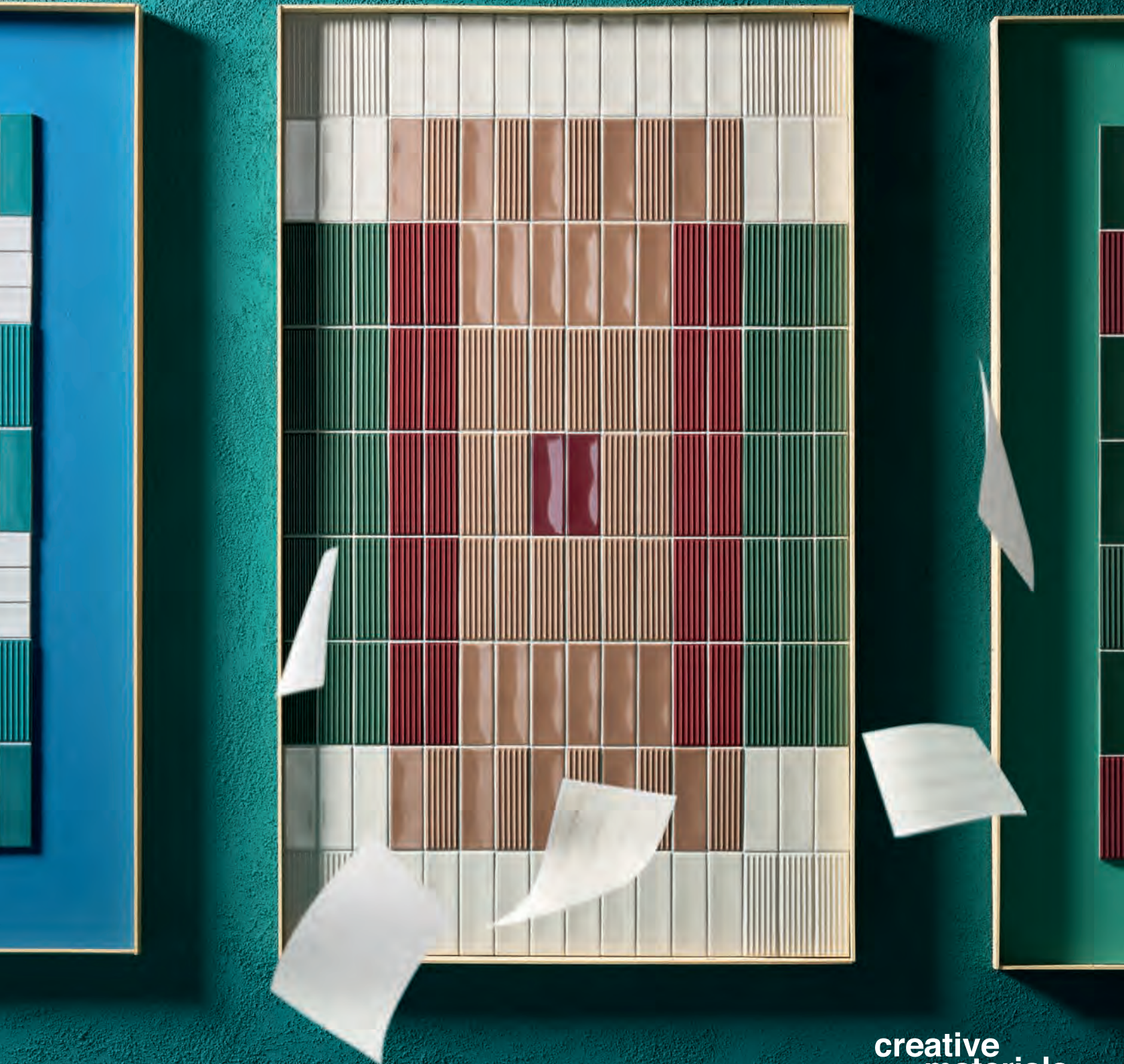
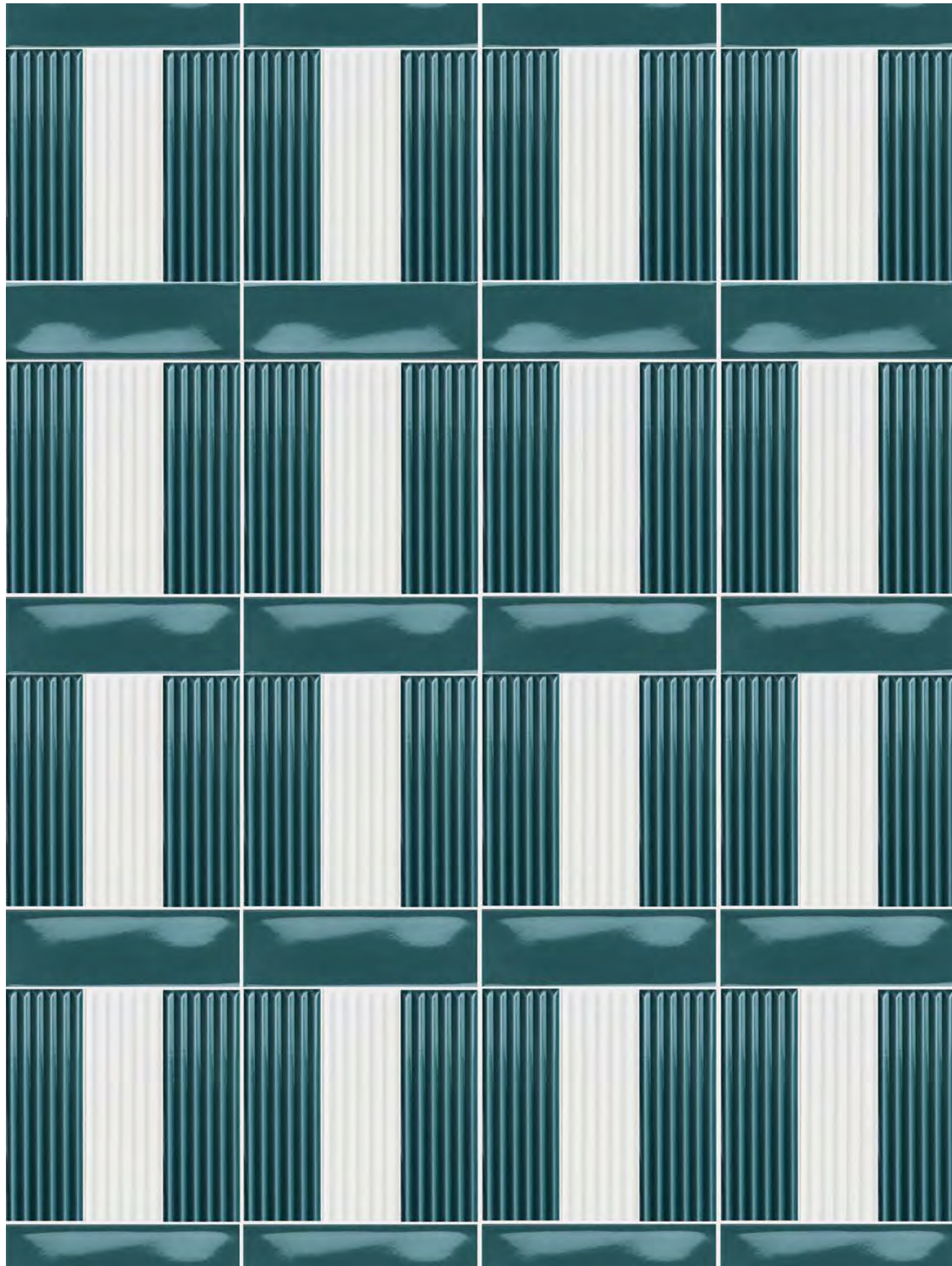


PLUMB

Pattern Layout Guide

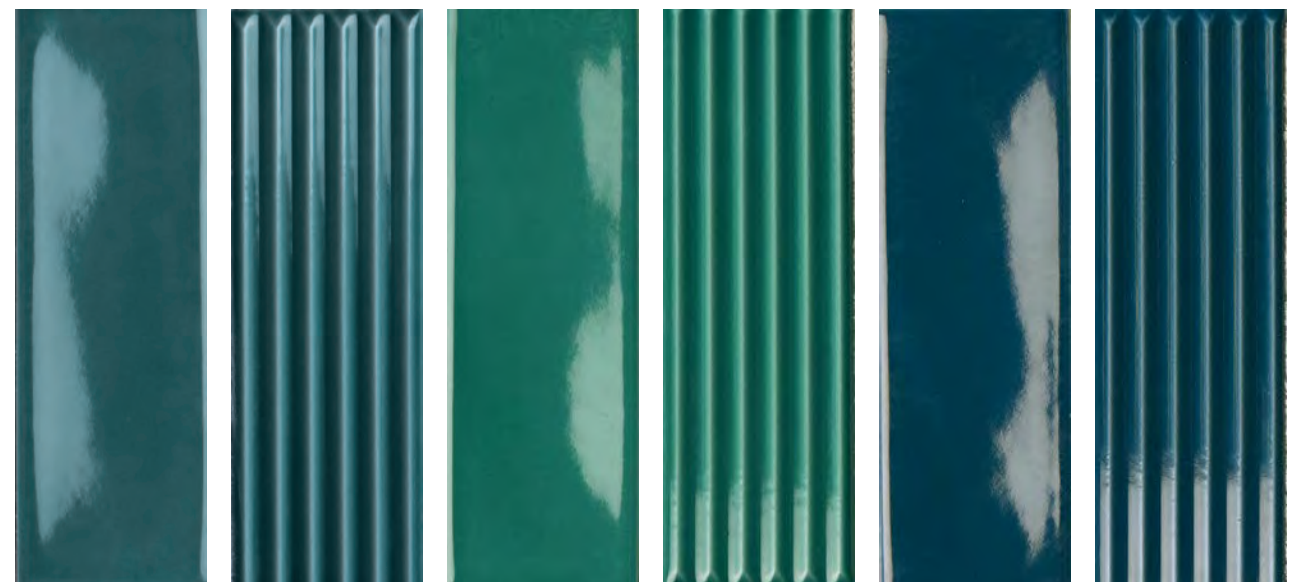




White Glossy White Linear Glossy White Matte White Linear Matte Ivory Glossy Ivory Linear Glossy

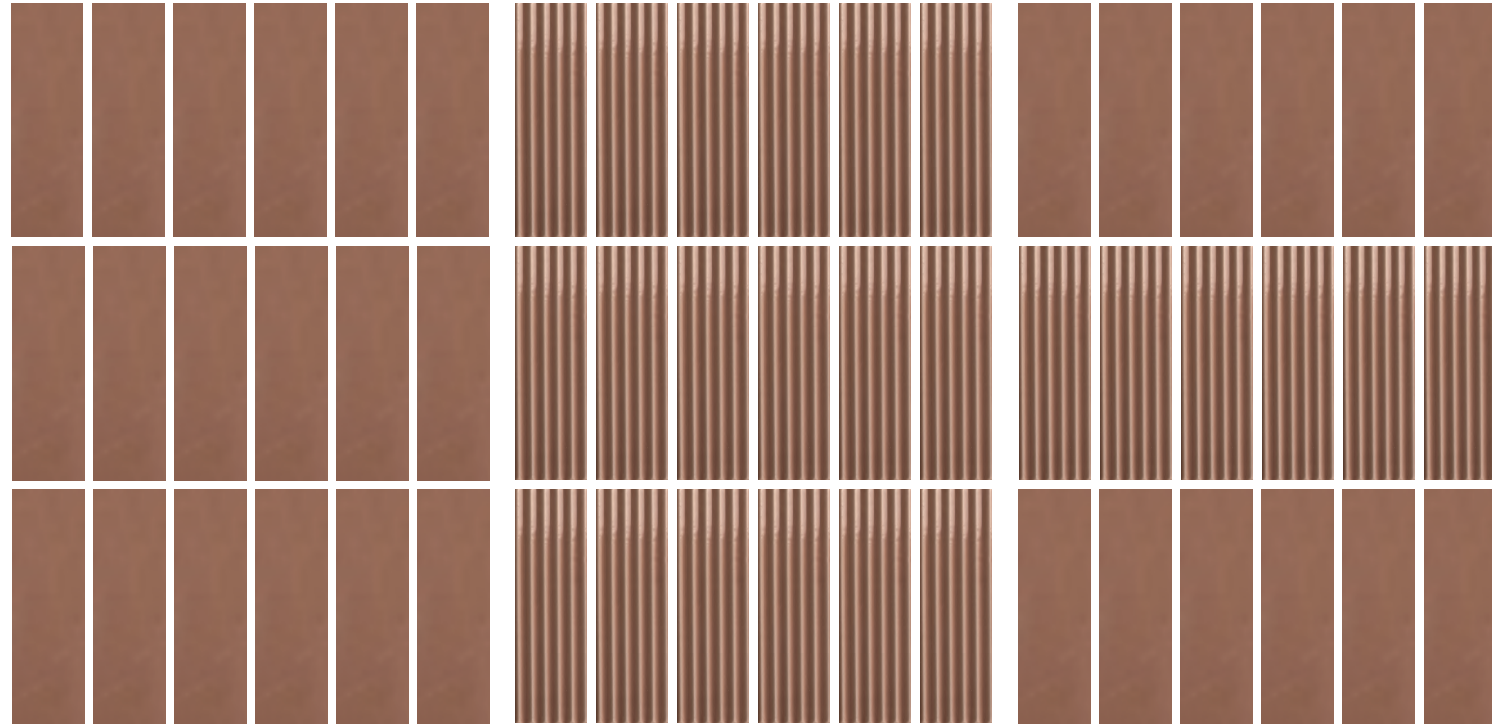


Terracotta Glossy Terracotta Linear Glossy Red Glossy Red Linear Glossy Evergreen Glossy Evergreen Linear Glossy



Emerald Glossy Emerald Linear Glossy Teal Glossy Teal Linear Glossy Blue Glossy Blue Linear Glossy

Pattern Layout Examples



One Color | Shown in Terracotta

Solid • 100%

Vertical Stack

One Color | Shown in Terracotta

Linear • 100%

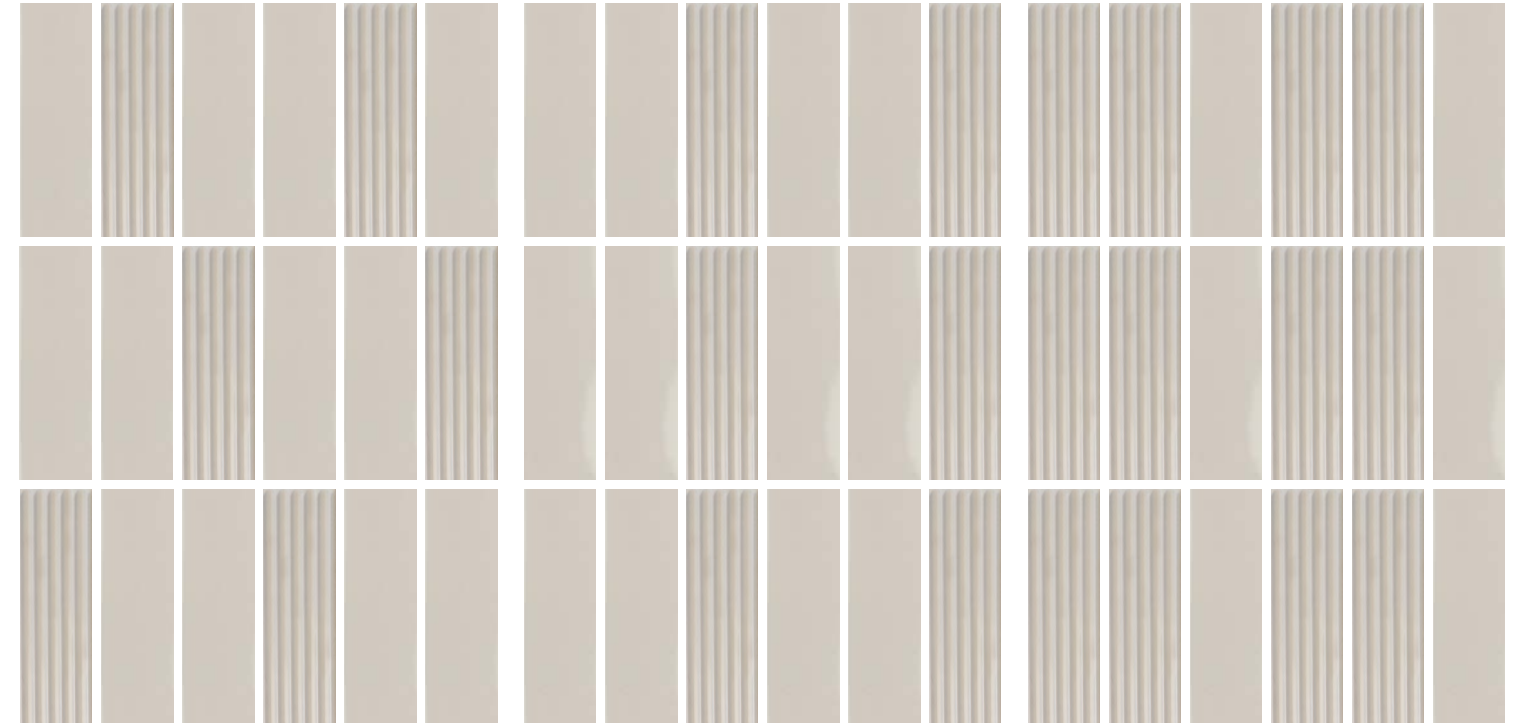
Vertical Stack

One Color | Shown in Terracotta

Solid • 50% Linear • 50%

Vertical Stack - Horizontal Bands

Pattern Layout Examples



One Color | Shown in Ivory

Solid • 66% Linear • 33%

Vertical Stack - Alternating

One Color | Shown in Ivory

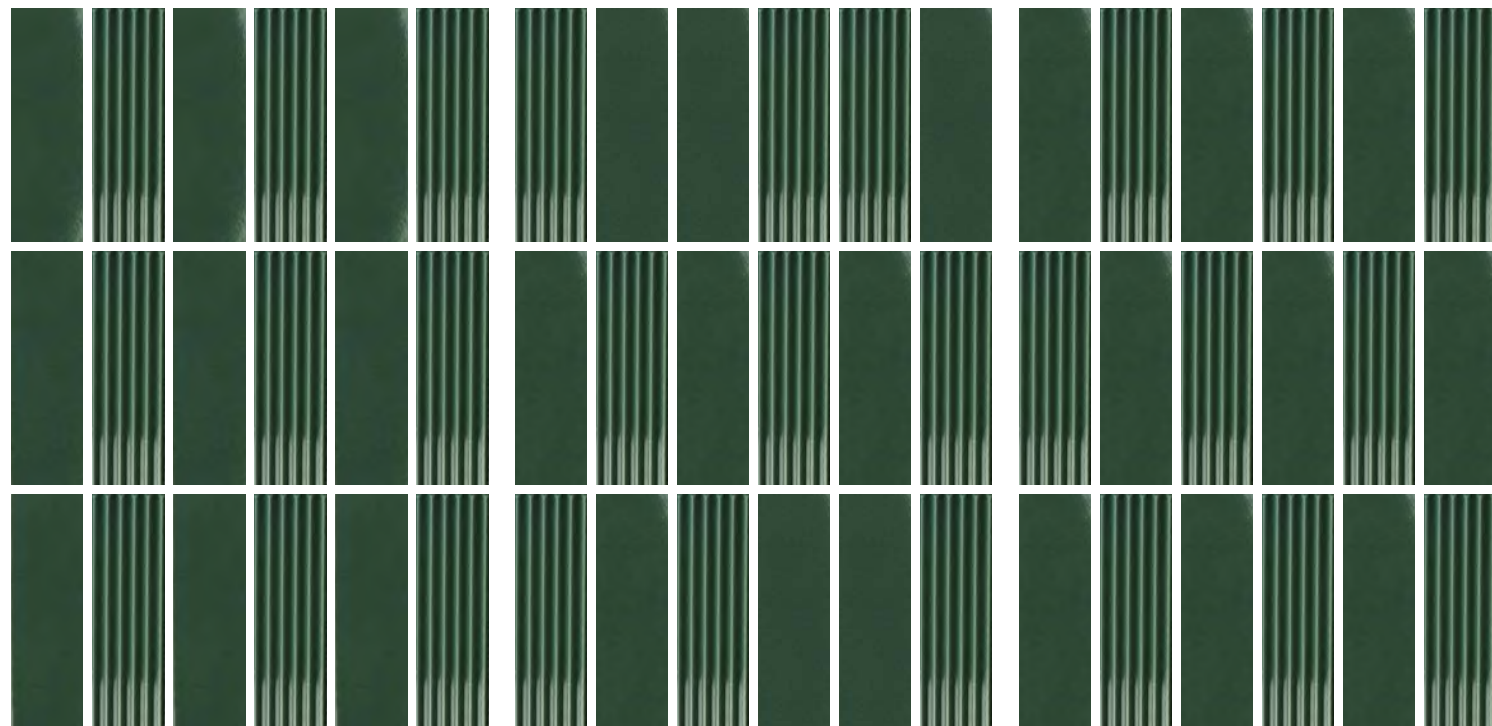
Solid • 66% Linear • 33%

Vertical Stack - Vertical Bands

One Color | Shown in Ivory

Solid • 33% Linear • 66%

Vertical Stack - Vertical Bands



One Color | Shown in Evergreen

Solid • 50% Linear • 50%

Vertical Stack - Vertical Bands

One Color | Shown in Evergreen

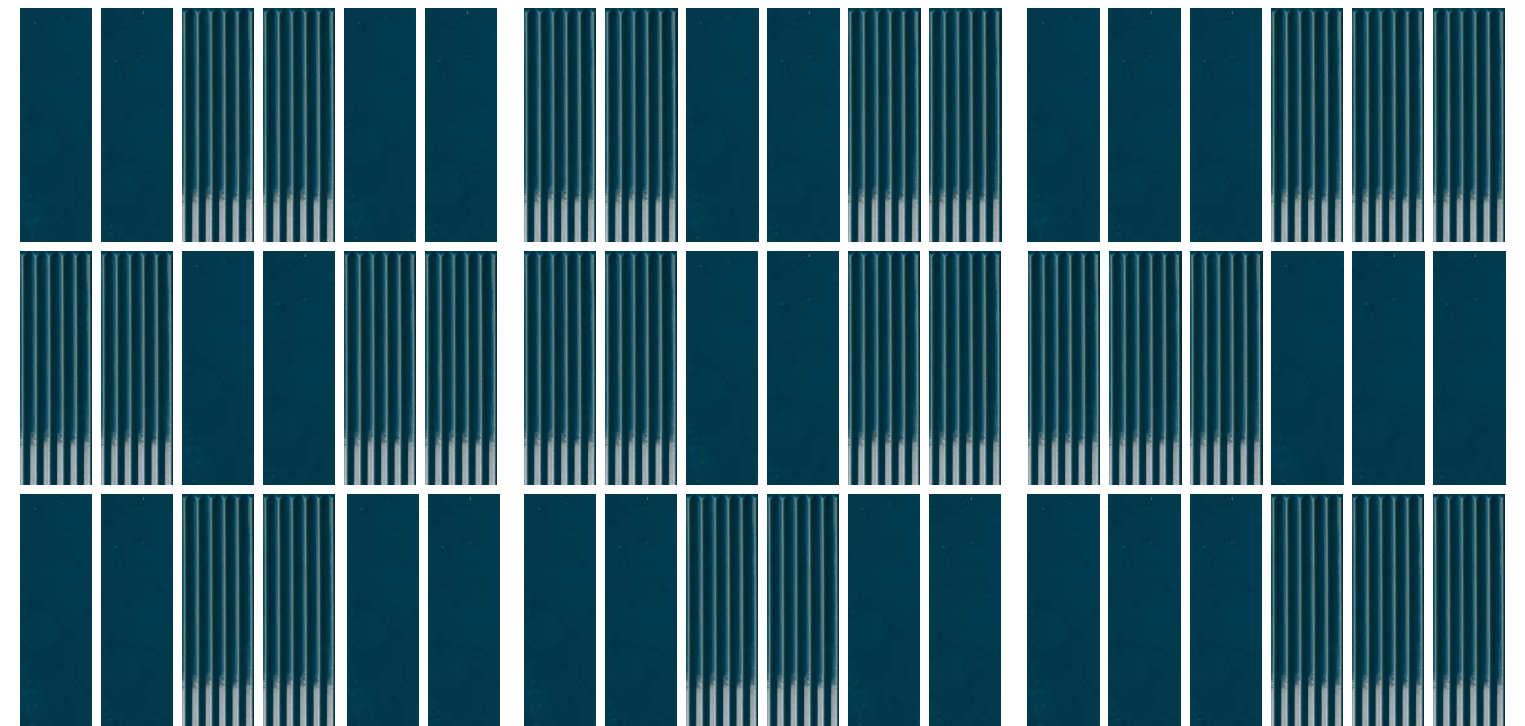
Solid • 50% Linear • 50%

Vertical Stack - Random

One Color | Shown in Evergreen

Solid • 50% Linear • 50%

Vertical Stack - Alternating



One Color | Shown in Blue

Solid • 50% Linear • 50%

Vertical Stack - Alternating

One Color | Shown in Blue

Solid • 50% Linear • 50%

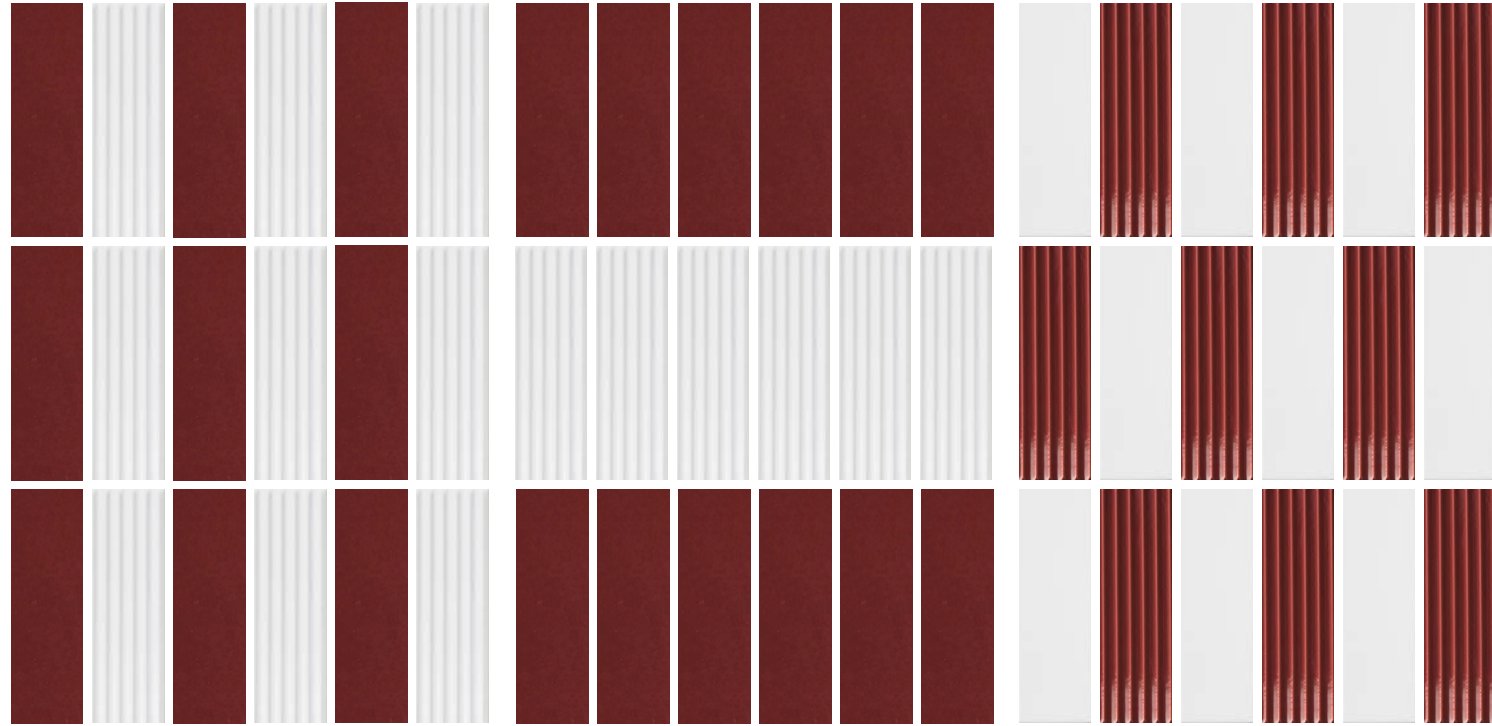
Vertical Stack - Grouped

One Color | Shown in Blue

Solid • 50% Linear • 50%

Vertical Stack - Alternating Groups

Pattern Layout Examples



Two Color | Shown in Red & White

Solid • 50% Linear • 50%

Vertical Stack - Horizontal Bands

Two Color | Shown in Red & White

Solid • 50% Linear • 50%

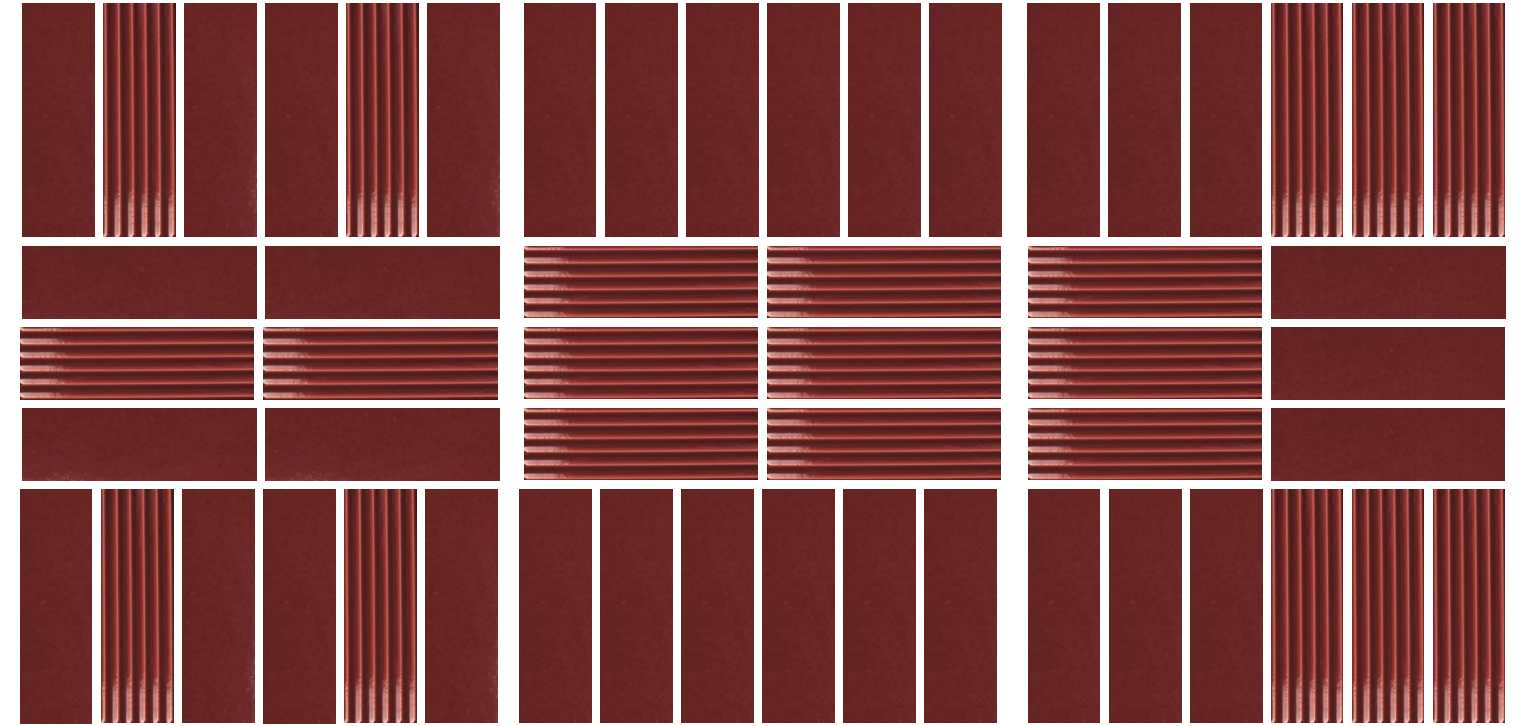
Vertical Stack - Horizontal Bands

Two Color | Shown in Red & White

Solid • 50% Linear • 50%

Vertical Stack - Alternating

Pattern Layout Examples



One Color | Shown in Red

Solid • 66% Linear • 33%

Alternating Bands - Vertical & Horizontal

One Color | Shown in Red

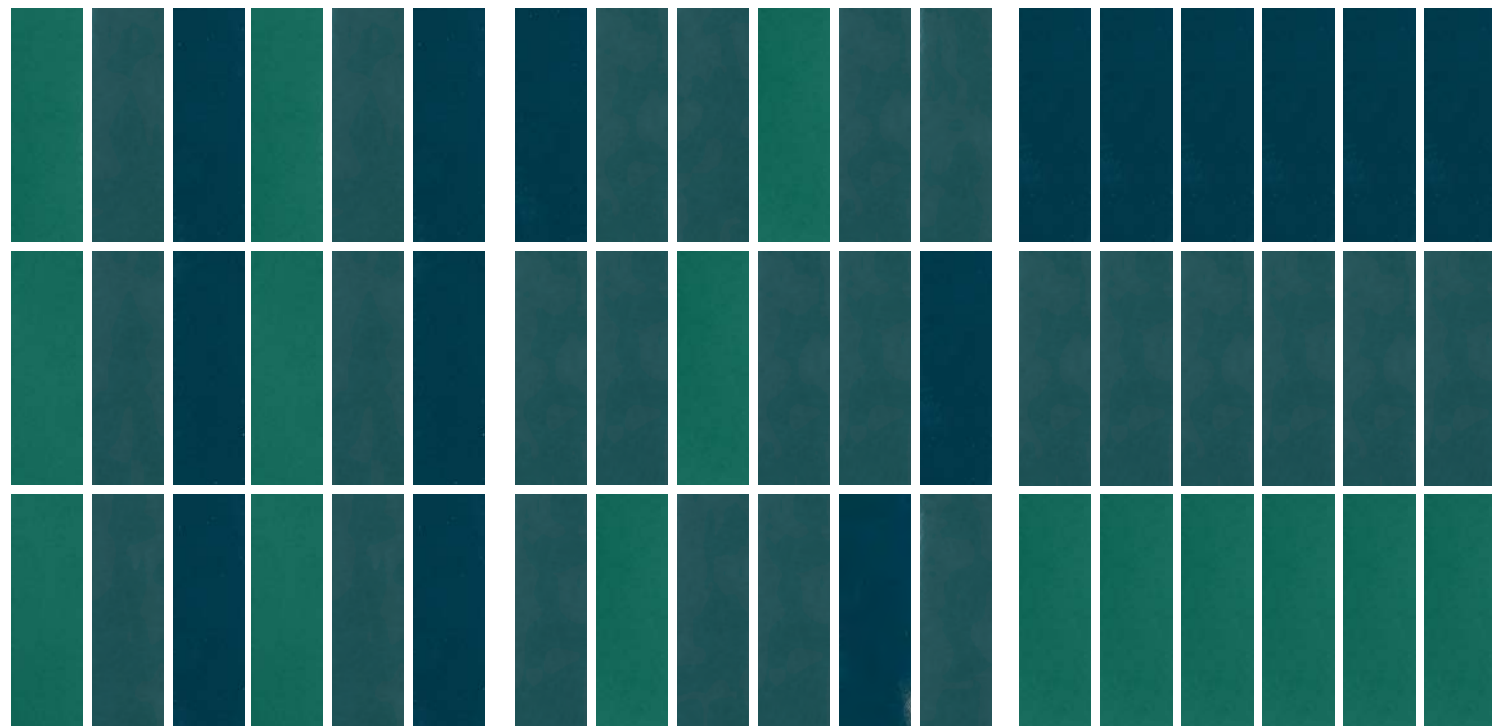
Solid • 50% Linear • 50%

Alternating Bands - Vertical & Horizontal

One Color | Shown in Red

Solid • 50% Linear • 50%

Alternating Bands - Vertical & Horizontal



Three Color | Blue, Emerald, Teal

Solid - Each Color • 33%

Vertical Stack - Vertical Bands

Three Color | Blue, Emerald, Teal

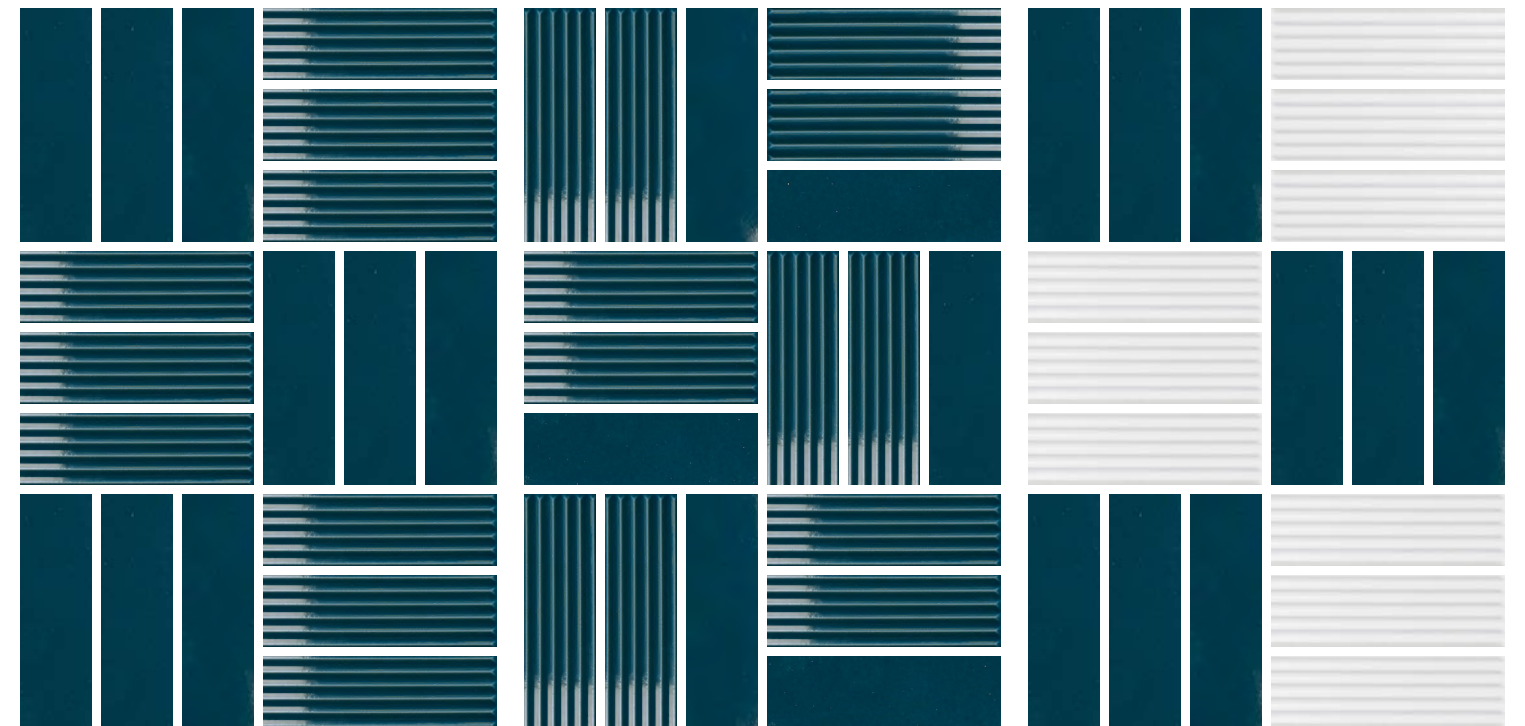
Color 1 • 66% Color 2 • 16.5% Color 3 • 16.5%

Vertical Stack - Color Offset

Three Color | Blue, Emerald, Teal

Color 1 • 66% Color 2 • 16.5% Color 3 • 16.5%

Vertical Stack - Horizontal Bands



One Color | Shown in Blue

Solid • 50% Linear • 50%

Basketweave - Alternating

One Color | Shown in Blue

Solid • 33% Linear • 66%

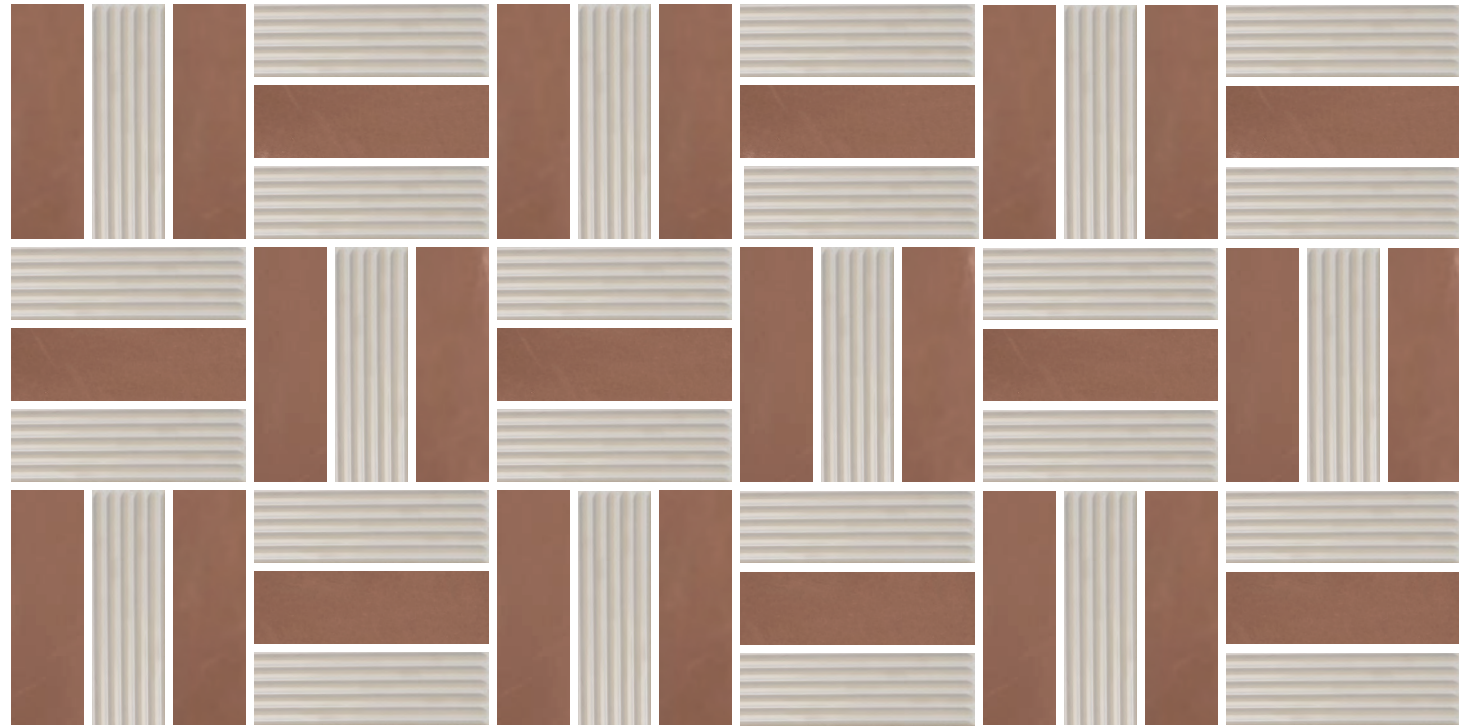
Basketweave - Alternating

Two Color | Shown in Blue & White

Solid • 50% Linear • 50%

Basketweave - Alternating

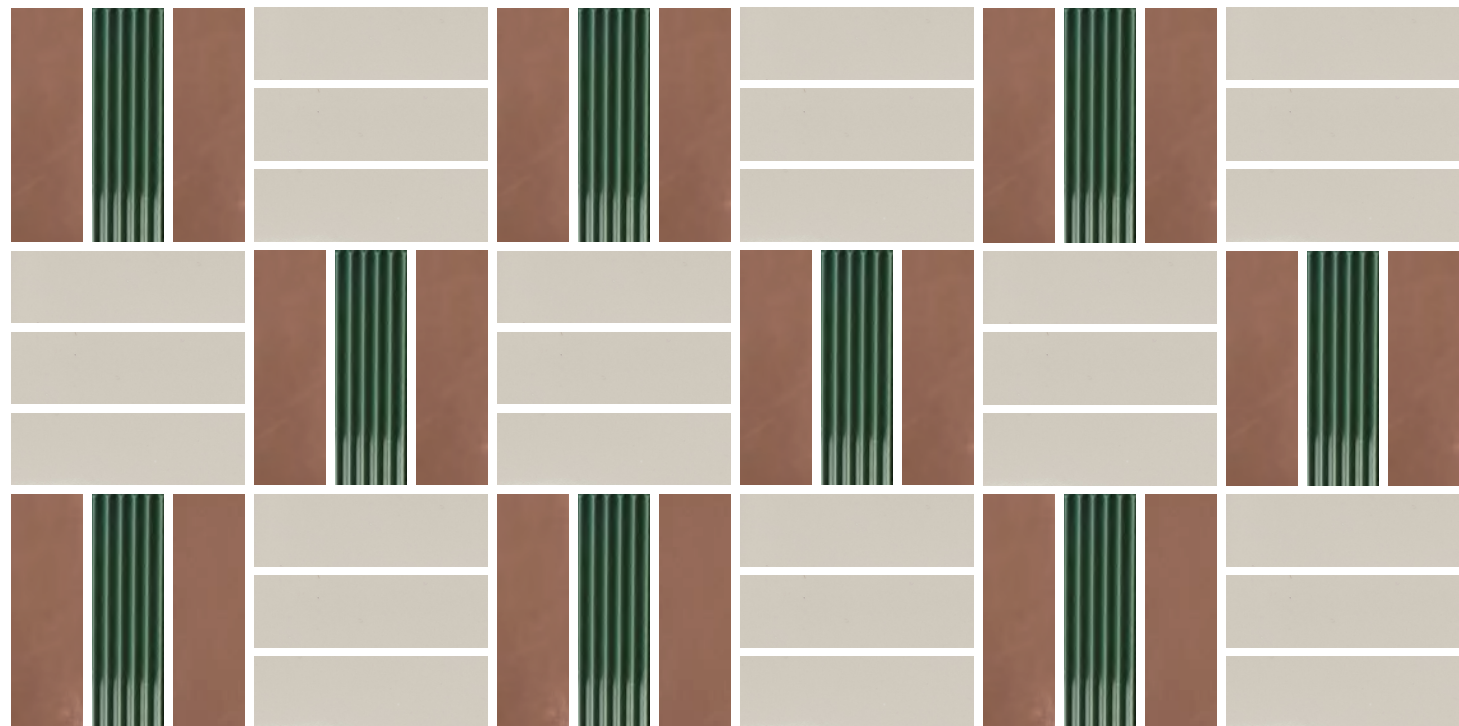
Pattern Layout Examples



Two Color | Shown in Terracotta & Ivory

Solid • 50% Linear • 50%

Basketweave - Alternating

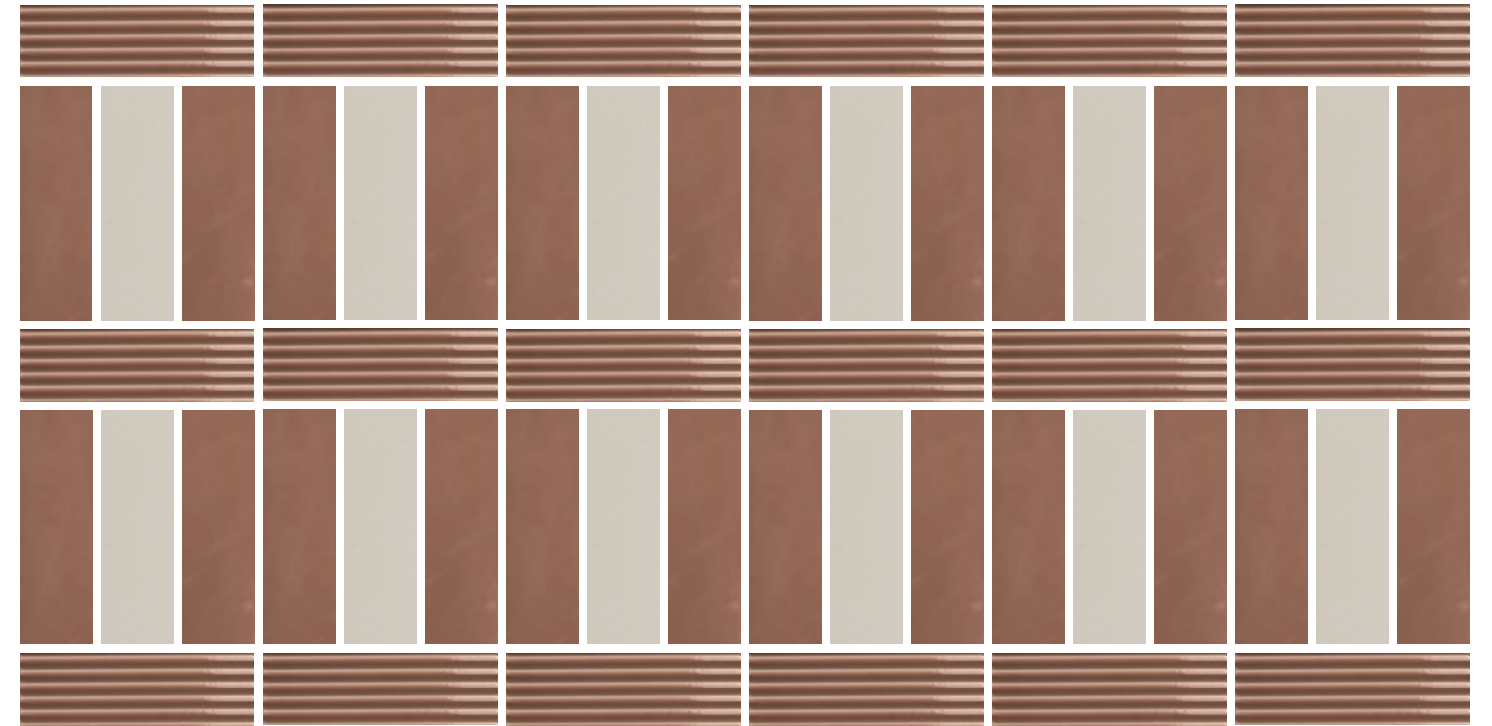


Three Color | Evergreen, Ivory, and Terracotta

Primary Solid • 50% Solid #2 • 33% Linear • 17%

Basketweave - Alternating

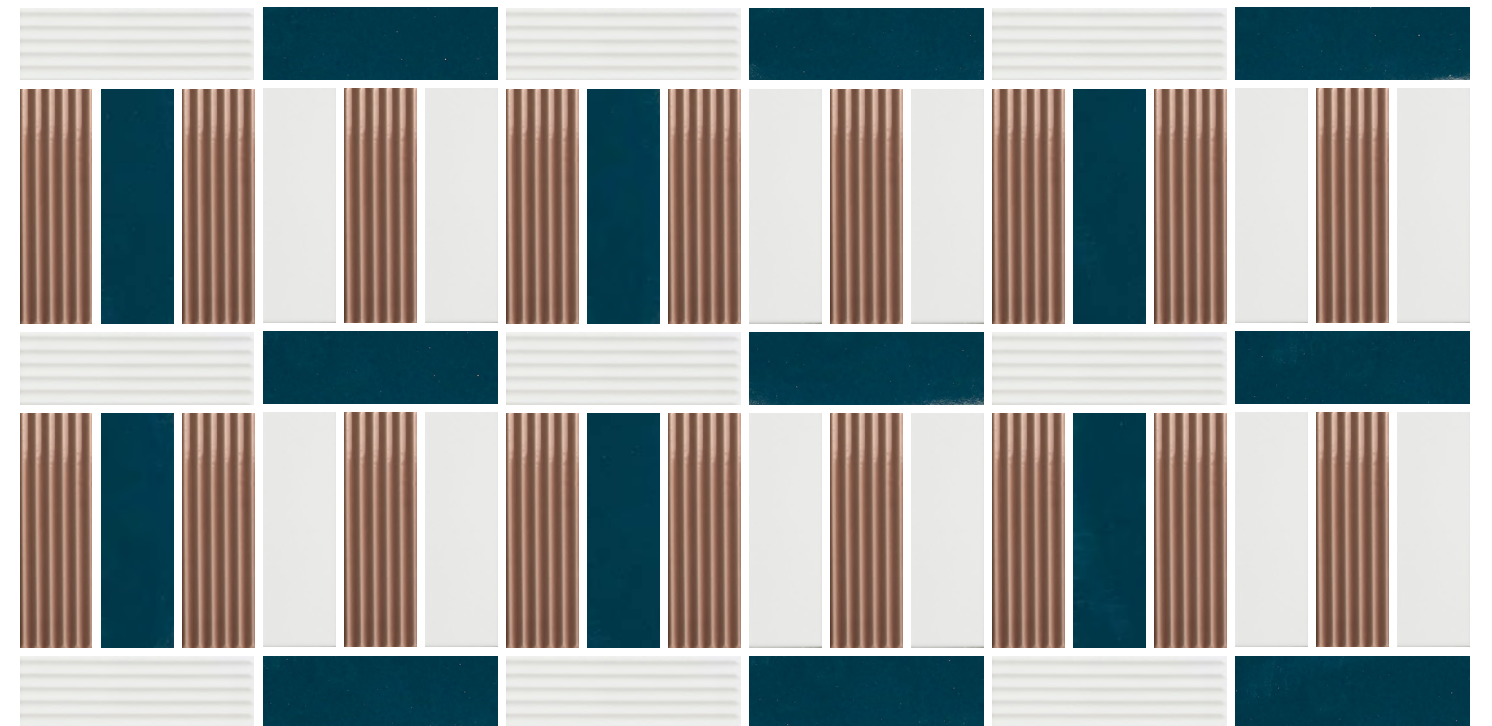
Pattern Layout Examples



Two Color | Shown in Terracotta & Ivory

Primary Solid • 45% Solid #2 • 22% Linear • 33%

Plaid

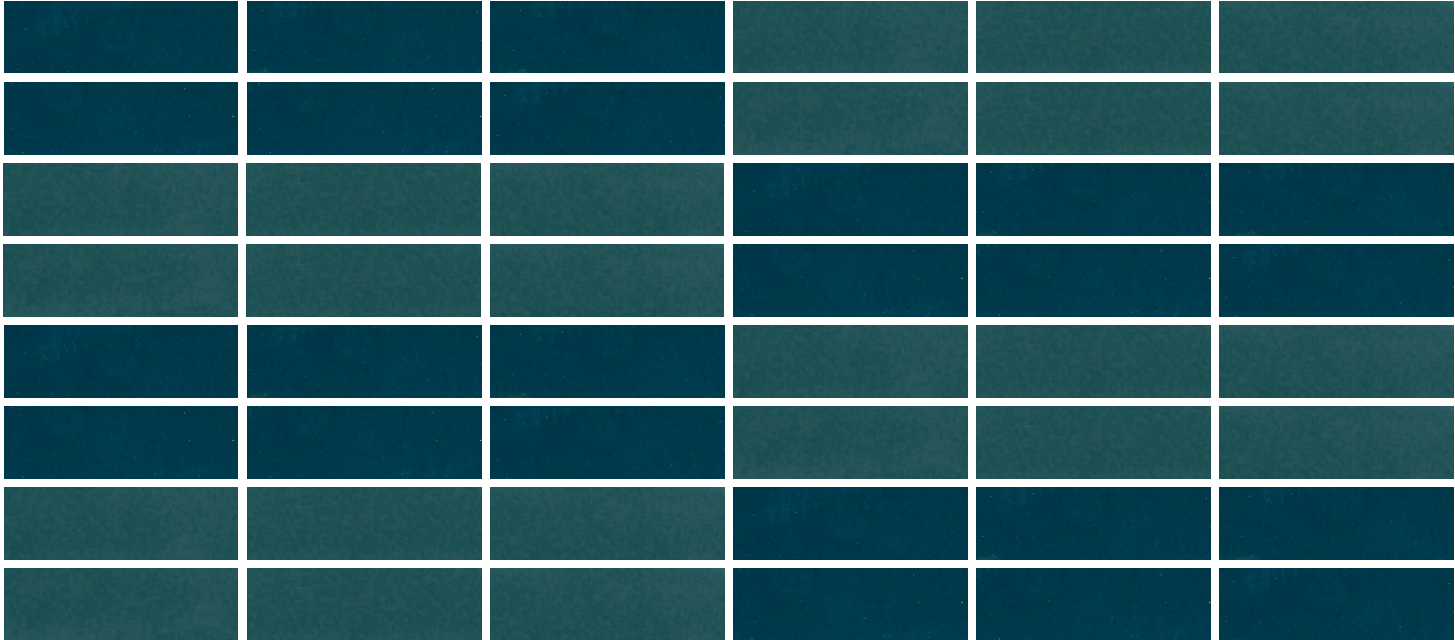


Three Color | Shown in Blue, Terracotta & White

Primary Solid • 25% Solid #2 • 20% Primary Linear • 40% Linear #2 • 15%

Plaid Weave

Pattern Layout Examples

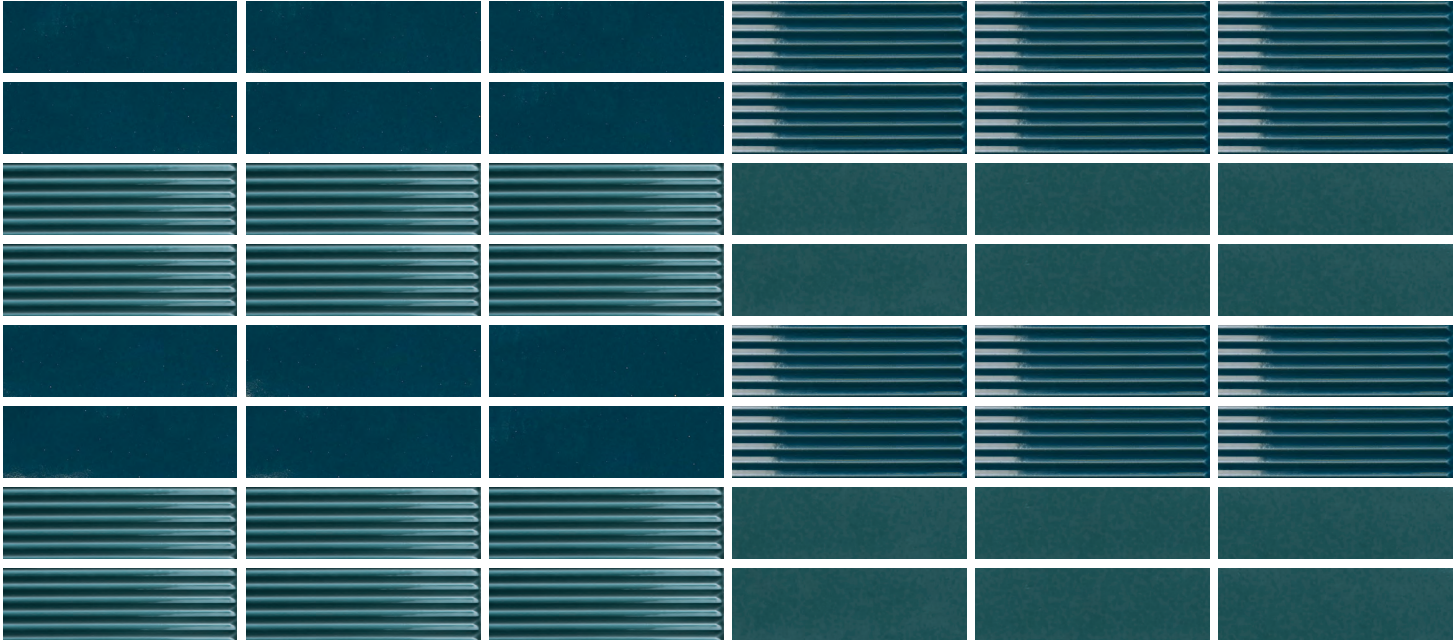


Two Color | Shown in Blue & Teal
 Color #1 • 50% Color #2 • 50%
 Horizontal Stack - Alternating Blocks



Three Color | Blue, Evergreen, and Teal
 Each Color Solid • 33%
 Horizontal Stack - Gradient Blend

Pattern Layout Examples



Two Color | Shown in Blue & Teal
 Solid Color #1 • 25% Solid Color #2 • 25% Linear Color #1 • 25% Linear Color #1 • 25%
 Horizontal Stack - Alternating Blocks



Eight Color | Shown in Blue, Emerald, Evergreen, Ivory, Red, Teal, Terracotta, White
 Solids • 90% Linear • 10%
 Horizontal Stack - Gradient Blend

creative materials corporation

www.creativematerialscorp.com | 800.207.2967 | info@creativematerialscorp.com

