

LUMERA GAUGED

creative
materials
corporation



Description

Lumera embodies a symphony of natural stone aesthetics, reinterpreted in enduring porcelain. Inspired by the depth of marble, the quiet refinement of limestone, and the organic texture of travertine, this collection unites nature's most expressive materials into one cohesive surface series. Each tile captures the geological nuances of authentic stone, from soft veining to crystalline movement, creating visual balance and timeless appeal.

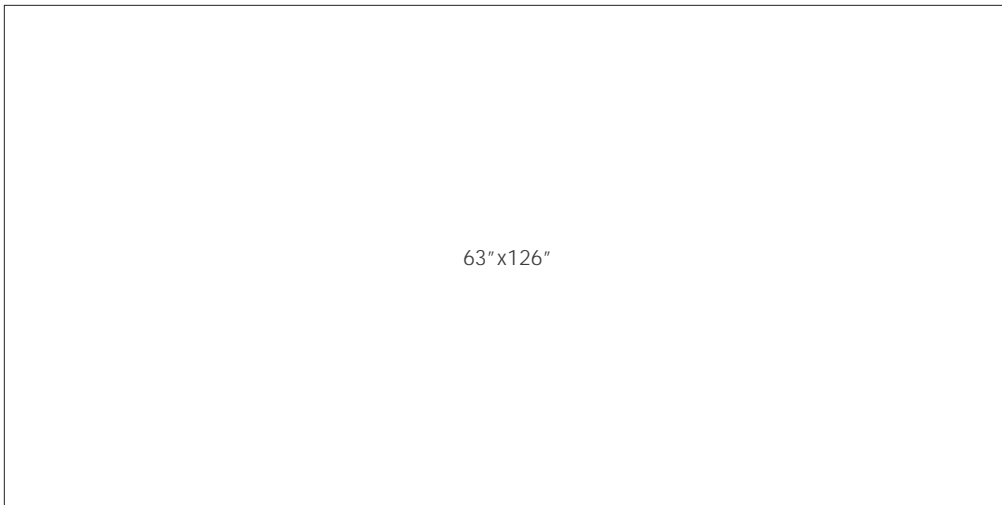
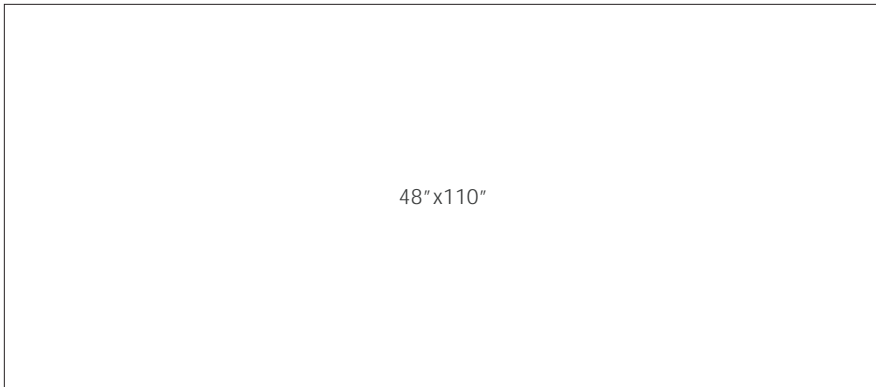
Color



Bianco Dior Bookmatch



Size



Technical Data

Specification Reference	Test Method	Test Result
DCOF	ANSI A326.3	Honed • Interior, Dry (> 0.42 Dry)
		Polished • Interior, Dry (> 0.42 Dry)
Water Absorption	ASTM C373	< 0.1%
Breaking Strength	ASTM C648	6mm • > 310 lbf
Deep Abrasion Resistance	ASTM C1243	Honed • < 140mm ³
		Polished • < 140mm ³
Body Type		Shade Variation
Unglazed Porcelain		V3

Finish & Thickness

Honed, Polished | 6mm

Lead Time

2-3 Weeks

Availability

Domestic Inventory

