



## Description

Lumera embodies a symphony of natural stone aesthetics, reinterpreted in enduring porcelain. Inspired by the depth of marble, the quiet refinement of limestone, and the organic texture of travertine, this collection unites nature's most expressive materials into one cohesive surface series. Each tile captures the geological nuances of authentic stone, from soft veining to crystalline movement, creating visual balance and timeless appeal.

## Color



## Technical Data

Specification Reference	Test Method	Test Result
DCOF	ANSI A326.3	Sandblasted • Exterior, Wet (> 0.55 Dry)
		Matte • Exterior, Wet (> 0.55 Dry)
		Honed • Interior, Dry (> 0.42 Dry)
Water Absorption	ASTM C373	< 0.1%
Breaking Strength	ASTM C648	6mm • > 310 lbf
Deep Abrasion Resistance	ASTM C1243	Honed • < 140mm <sup>3</sup>
		Matte • < 120mm <sup>3</sup>
		Sandblasted • < 120mm <sup>3</sup>
<b>Body Type</b>	<b>Shade Variation</b>	
Unglazed Porcelain	V3	

## Finish & Thickness

Honed, Matte, Sandblasted | 6mm

## Lead Time

2-3 Weeks

## Availability

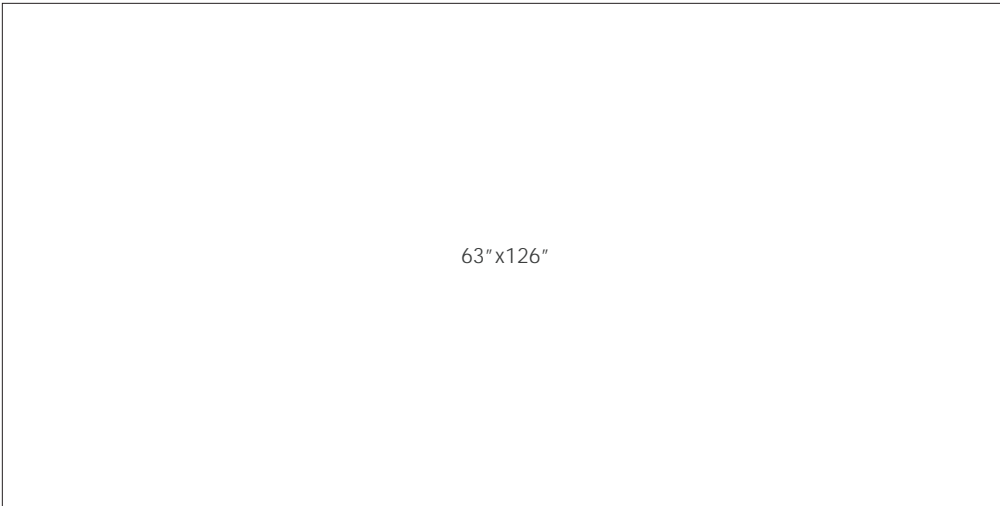
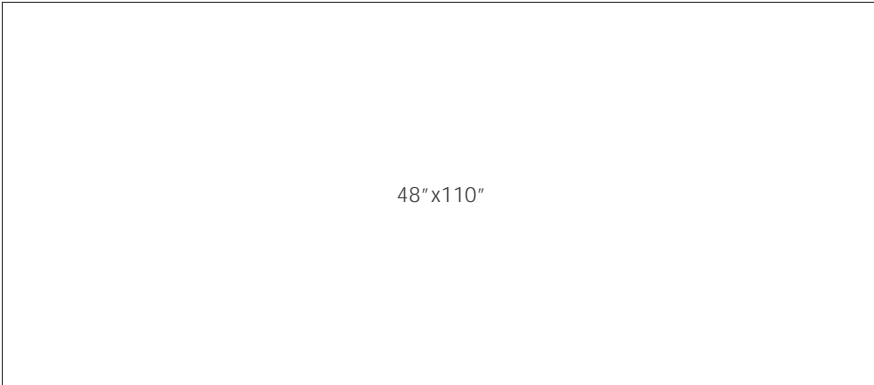
Domestic Inventory




2026v2

# LUMERA GAUGED

## Size



Color — Size & Thickness	
	<b>Travertino Titanium</b>
Gauged 48"x110"x6mm Rectified	Honed
Number of Faces	10
Gauged 63"x126"x6mm Rectified	Honed Matte Sandblasted
Number of Faces	8



2026v2